

APPLICATION GUIDE FOR INTERNATIONAL BACCALAUREATE DIPLOMA PROGRAMME (IBDP) STUDENTS

ACADEMIC YEAR 2023-2024

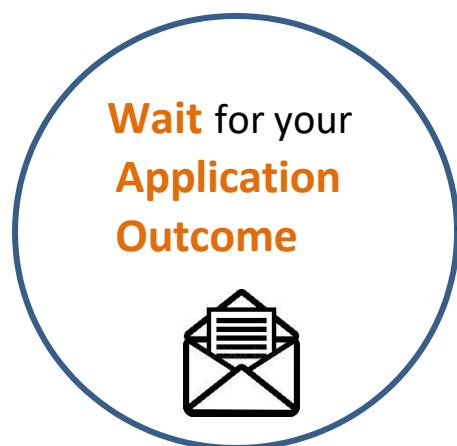
NATIONAL UNIVERSITY OF SINGAPORE

OFFICE OF ADMISSIONS | UNIVERSITY TOWN, 2 COLLEGE AVENUE WEST, #01-03, SINGAPORE 138607

Application Overview

You will need to complete all relevant sections of your application before submitting it online. Do make sure you have sufficient time to apply, submit supporting documents (if applicable) and complete application fee payment by **21 February 2023**.

Please refer to the [Supporting Document Guide](#) for the list of supporting documents to prepare for submission.



The Admissions Selection Committee will review the applicant's academic merits and choice of study before making an offer of admission to the student.

Some programmes require additional assessments such as interviews, selection tests and portfolios – you will be notified accordingly if you need to attend one.

The admission offer letter will be available online after you have been offered admission. The offer letter will indicate how and when to reply to the offer. Don't miss the deadline!



Visit the admissions [website](#) for more details. Alternatively, you may send us your questions at www.askadmissions.nus.edu.sg!

Before you start...

Here are a few things to note:

- (1) For best user experience, please use **Google Chrome** or **Mozilla Firefox**. Other browsers (such as Internet Explorer, Microsoft Edge versions before version 44.17763) may experience compatibility issues.
-

- (2) You can use one of the following **social accounts** to proceed with your undergraduate admissions application:

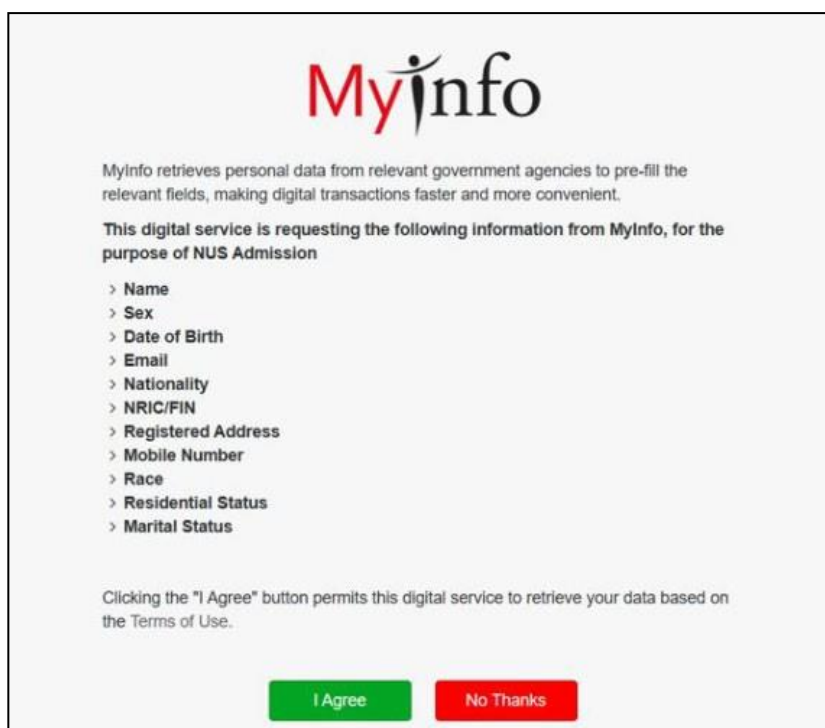
- Facebook
- Google (e.g. Gmail)
- Microsoft Account (e.g. Outlook or Hotmail)
- LinkedIn

By using your social account for login, information entered in the application form will be automatically saved. As you will be logged out if your session idles for more than 30 minutes, using your social account for login ensures that information previously entered can be retrieved when you resume the session again.

You are encouraged to create an email account which you can use for this application purpose.

If you do not have any of the above social accounts, please click [here](#) to create an NUS Account for Undergraduate Admission Application.

- (3) You can now use **Myinfo** to pre-fill the relevant fields in your application form, making submission of accurate data faster and more convenient. Click on '**Retrieve Myinfo with Singpass**' to proceed.



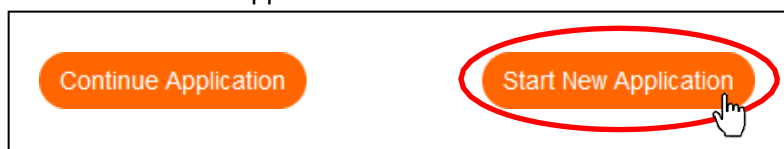
The screenshot shows the MyInfo consent interface. At the top is the MyInfo logo. Below it, a paragraph states: "Myinfo retrieves personal data from relevant government agencies to pre-fill the relevant fields, making digital transactions faster and more convenient." This is followed by a bold statement: "This digital service is requesting the following information from MyInfo, for the purpose of NUS Admission". A list of requested fields follows, each preceded by a right-pointing chevron: Name, Sex, Date of Birth, Email, Nationality, NRIC/FIN, Registered Address, Mobile Number, Race, Residential Status, and Marital Status. At the bottom, a line of text reads: "Clicking the 'I Agree' button permits this digital service to retrieve your data based on the Terms of Use." Below this text are two buttons: a green "I Agree" button and a red "No Thanks" button.

If you use the Myinfo function, you will only be allowed to make changes to the following fields:

- Marital Status
- Email
- Mobile number

(4) If you have opted to use Myinfo function initially, but would like to proceed to fill up the application form without pre-filled information retrieved from Myinfo, follow the steps below to proceed:

- a) Close browser
- b) Re-login with the same social account
- c) Click on 'Start New Application' button



(5) Students residing in Singapore are encouraged to use the **postal code search function** so that accurate residential address information such as Block/House Number and Street Name can be pre-loaded in one-click.



Note: This function is only applicable to residential addresses in Singapore.

(6) If you wish to amend details such as contact information and/or choice of study after application submission, you may do so via the [Applicant Portal](#) by 21 February 2023.

(7) Students are required to select at least one Single Degree choice of study. Based on the selected Single Degree programme, Double Degree (DDP), Concurrent Degree (CDP), Double Major, Minor and Specialisation Programmes that are related to the Single Degree programme will be listed in the drop-down menu for selection.

If you decide to revise your Single Degree programme choice(s) before application submission, you will be required to re-select your DDP, CDP, Double Major, Minor and Specialisation Programmes as your earlier selection will be **reset**. The list of relevant DDP, CDP, Double Major, Minor and Specialisation Programmes for selection will be revised in accordance to the new single degree programme choice(s).

(8) The top Navigation Bar indicates you have completed a specific section based on the colours presented.

- Completed section = Grey
- Section in-progress = Orange
- Section to be completed = Blue

The screenshot shows the top navigation bar of the NUS Office of Admissions Admission Application Form. The bar includes the NUS logo and 'Office of Admissions' text on the left. A large banner image with the text 'ADMISSION APPLICATION FORM' is on the right. Below the banner is a horizontal navigation bar with seven sections: 1 PERSONAL DETAILS, 2 CHOICE OF COURSES, 3 EDUCATION, 4 ACHIEVEMENT, 5 OTHER INFORMATION, 6 DOCUMENTS, and 7 DECLARATION. Section 3, 'EDUCATION', is highlighted in orange, indicating it is the current section in progress. Sections 1, 2, 4, 5, 6, and 7 are grey, indicating they are completed. A 'Logout' button is located on the right side of the navigation bar. Below the navigation bar is a 'Navigate to previous pages' dropdown menu with a 'Go' button. The dropdown menu lists the following options: Personal Details, Choice of Course, Education, Achievement, Other Information, Documents, and Declaration.

The Navigation Drop-down Menu allows you to navigate to a previous section to review or amend any information. Do note that you will have to review the remaining sections again before resuming from where you had previously stopped.

To ensure information entered is saved, you are required to use the **Save and Next** button to proceed to the next page of the application form.

Applying to NUS?

Application for applicants presenting the International Baccalaureate (IB) Diploma opens from **1 November 2022 to 21 February 2023**.

Follow these instructions to apply. You can only apply once in each academic cycle.

Start your application by completing the [online application form](#):

University Candidature

- ② If you are a current or former university student, you should apply via www.nus.edu.sg/oam/apply-to-nus/transfer-applicants.
- ② Otherwise, select 'No' to proceed.



Personal Details – Myinfo

- ② You can pre-fill your personal details using Myinfo that retrieves government-verified data from relevant government agencies.
- ② Please provide a valid email address and mobile number for the University to contact you if necessary. Applicants who provide a **valid Singapore mobile number** will receive SMS alerts for admission updates (e.g. shortlist notification for interview programmes or admission offer).

National Service (NS) in Singapore

- ② You should choose 'Not Applicable' if you are not required to fulfil the mandatory national service in Singapore.

Alternative Contact Information

- ② A person to contact in case of emergency.

Choice of Study

- ② You can apply for a maximum of **8 Single Degree** programme choices and another **8 Double Degree (DDP), Concurrent Degree (CDP), Double Major, Minor and Specialisation Programmes**.
- ② Click the '+' button to add your choice of study.

Single Degree Programmes	<input type="text"/>	
Double Degree (DDP), Concurrent Degree (CDP), Double Major, Minor & Specialisation Programmes	<input type="text"/>	

- ② Only students who have selected "Engineering" as one of their Single Degree choice of study, will be asked to indicate if they wish to be considered for Special Programmes offered by the College of Engineering and Design – Engineering Scholars Programme, and Engineering and Medicine (Duke-NUS).

Education – International Baccalaureate

- ② All applicants sitting for the IBDP May and November exam sessions **must authorise the International Baccalaureate to release their electronic transcript to NUS before the application deadline**. You can do so by informing your school's IB coordinator.

- Examination sessions November 2022 and earlier – your IBDP results must reach us by 21 February 2023, 23:59 Singapore time (GMT + 8)
- Examination session in May 2023 – your IBDP results must reach us by 7 July 2023, 23:59 Singapore time (GMT + 8)
- ③ Select the name of your school using the dropdown list. If your IB school is located outside of Singapore, select “IB World Schools outside Singapore” and key in the name of your school. Select the corresponding country where your school is located.
- ③ Indicate if you have **retaken** any IBDP exam papers after graduation. If you have selected ‘Yes’, please re-authorise the IB to release your latest electronic transcript to NUS. You can place a request with the IB [here](#).
- ③ Provide your **IB Personal Code** to allow NUS to verify your IBDP transcript. For May 2023 examination session applicants, if you do not have your Personal Code at the point of application, please leave it blank. You should update it via the [Applicant Portal](#) by 30 April 2023.
- ③ Add a minimum of 6 IB subjects and their grades by clicking on ‘Add’.

To edit the subjects, click . To delete the subject, click .

If you are applying with Actual Results, click the icons and then click ‘Update’ to add your EE/TOK grades.

● Education – Secondary Education

- ③ Declare if you have completed your Secondary 4 studies under the Integrated Programme (IP).
- ③ Add your Secondary Education subjects by clicking on (if applicable).
- ③ Declaration of the relevant Secondary Education subjects is important to fulfil [subject pre-requisites](#) of certain undergraduate programmes.
- ③ You are not required to complete this section if you did not take these subjects.

● Education – Other Education

- ③ It is mandatory to declare if you have taken a Singapore-Cambridge GCE Mother Tongue Language subject.
- ③ The other sections are optional.

● Achievement

- ③ The University will consider applicants who have demonstrated a strong interest or aptitude for the programmes applied for under the Aptitude Based Admissions Scheme.
- ③ It is mandatory to complete this section by answering all the 5 short response questions.
- ③ You may list up to three achievements/activities in the “Achievement” section of the

application form.

- ② If you do not wish to list any achievements/activities, please select the “Not Applicable” option.

● **Health and Support**

- ② Share if you have medical or mental health condition and/or physical disabilities; and/or drug or food allergies.
- ② The information will enable NUS to develop a better understanding of an applicant's need for support/resources during his/her studies in NUS, and to ascertain if provisions required are available, in an effort to make the student's experience a positive one.

● **Other Information**

- ② Please indicate if you have been arrested, charged in court, put on probation or convicted of an offence; suspended or expelled from an educational institution; terminated from your employment for any reason; or have any court or disciplinary proceedings pending.
- ② The information will enable the University to provide support during your studies in NUS. All information submitted will be treated confidentially.

● **Tuition Grant**

- ② Singapore Permanent Residents and International Students are to indicate their intention to apply for Tuition Grant.
- ② Singapore Citizens should declare accordingly.


● **Financial Aid**

- ② This is not an application for financial aid, but for you to indicate your intention to apply for it.
- ② If you wish to apply for financial aid, please visit <http://www.nus.edu.sg/oam/financial-aid>.

● **Household Income**

- ② The University is collecting household income information of all applicants to assess the levels of financial aid necessary for needy applicants and to increase the awareness of financial aid. It has no impact or implication on your application outcome.

● **Documents**

- ② Based on your information declared, you will be prompted to upload specific supporting documents to support your undergraduate admission application.
- ② Click on  to upload the relevant documents.
- ② If you wish to submit additional documents after you have submitted the online application, you may do so via the [Applicant Portal](#) by the application closing date.

● **Declaration**

- ② Please declare that all information provided in the application form is correct.

● **Personal Identification Number (PIN)**

- ② You must create a confidential **8-digit alphanumeric PIN**.
- ② The PIN and Application Number will allow you to log in to the [Applicant Portal](#) to track your application and to submit additional supporting documents online.



● **Submission Summary**

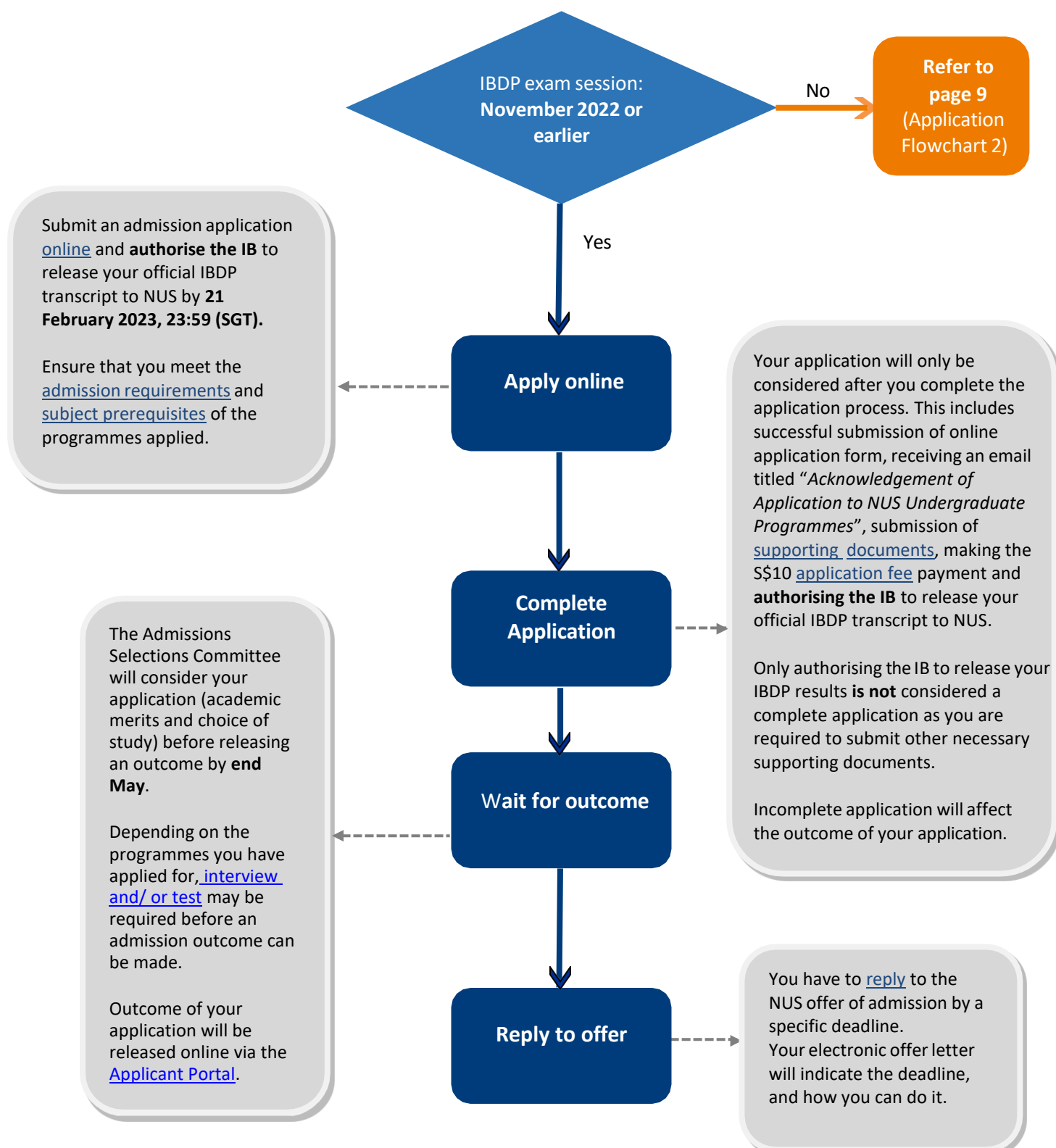
- ② If you wish to make any amendments, you should click on the **Navigation Drop-down Menu** or the **Back** button to return to the relevant section. After the change is made, click on **Save and Next** icon to save the revised information. Click the **Submit** button to proceed with the application.
- ② **Do check your details before clicking the Submit button.**

● **Acknowledgement**

- ② Once submitted successfully, the Application Acknowledgement page with your **Application Number** will be displayed.
- ② A non-refundable [application fee](#) of SGD 10 is payable via various modes.
- ② You will also receive an email titled “Acknowledgement of Application to NUS Undergraduate Programmes” if your application has been received.

AY2023 Application Flowchart 1

(Exam Session is November 2022 or earlier)



AY2023 Application Flowchart 2 (Exam Session: May 2023)

