



AY2025/26  
UNDERGRADUATE  
**FIRST-YEAR GUIDE**



## From LiNUS,

Welcome to NUS!

I'm LiNUS, your friendly campus mascot, here to give you a roaring welcome to the NUS family.

Classes will have you inspired by the new knowledge gained, while co-curricular activities will add immeasurable value to personal effectiveness and wellness, community mindedness, interpersonal communication, and global citizenship. The dynamic future holds endless possibilities waiting for you!

By the way, have you heard about NUSOne? It's the University's latest educational transformation to integrate out-of-classroom experiences within your NUS journey. Dive into our treasure trove of activities, make friends who'll laugh at your jokes (even the bad ones), and discover a new hobby or two along the way.

We are so excited to have you with us. To help you kickstart university life, this *First-Year Guide* is your one-stop resource to navigate both the academic and co-curricular development opportunities in NUS. It's like having a map in a video game, helping you level up in all things NUS.

So buckle up for an exhilarating journey — learn, laugh, and collect stories that you'll be telling for years. Can't wait to hear about your wonderful #NUSLife! 🦁

## Best wishes,



@nusbuzz



@linusthemascot



## Vision

A leading global university shaping the future

## Mission

To educate, inspire and transform

## Values

- Innovation
- Resilience
- Excellence
- Respect
- Integrity





# Table of Contents



## GETTING STARTED

- 08 Your uNivUS Mobile App
  - 10 Getting Around Campus
  - 12 Campus Facilities & Buildings
  - 14 Campus Accommodation
  - 18 Student Finances
  - 20 Student Accessibility
  - 20 International Students
- 

## NAVIGATING YOUR ACADEMIC JOURNEY

- 24 The NUS Academic System
  - 28 Transition to Higher Education (T.H.E.) Programme
  - 29 Technology & AI in Education
- 

## DESIGNING YOUR STUDENT LIFE

- 32 The NUS Orientation
  - 33 Engage & Explore
  - 34 Grow & Empower
  - 35 Impact & Serve
  - 36 Student Wellness
- 

## USEFUL CONTACTS

- 40 Useful Contacts



01

# Getting Started





## Your uNivUS Mobile App

Meet **uNivUS** — NUS' gateway designed to keep key NUS services and resources within your easy reach. Also known as your best campus friend from Day One.

Serving as a primary touchpoint, uNivUS supports your NUS experience with multiple features, such as:

- a **Bus Arrival** widget to catch campus shuttles and local buses,
- a **Calendar** for classes, assignments and examination information,
- a **Campus Map** to easily find key locations in NUS,
- a **Digital ID** to access campus facilities,
- an **Explore** widget for shortcuts to commonly used services,
- an **Events** module containing information about upcoming activities, and
- a **Resources** section with everything you need for your #NUSLife.

Find out more about [uNivUS](#).







# Getting Around Campus

Hop aboard the **NUS Internal Shuttle Bus (ISB)**, where you can get from one end of campus to the other end, for free! Plus, download the **NUS Next Bus app** to see real-time bus locations and timings. Just remember to show your NUS student card to our friendly driver, during specific peak periods when verification measures kick in.

Keep up with the **latest mobility-related news:**

 [@NUSOnTheMove](https://t.me/NUSOnTheMove)



## QUICK TIP: ISB

## 01

Strategically plan your travel to **avoid the super peak periods** where your timetable permits.

Super Peaks include:

- 9.35am-10am
- 11.35am-12pm
- 1.35pm-2pm
- 5.35pm-6pm

## 02

Make your **bus ride** an enjoyable trip:

- For your safety, stay clear of doors.
- Help keep the bus clean. Refrain from eating or drinking on the bus.
- Press the bell in advance when your stop is coming, to alight.
- Don't forget your belongings!

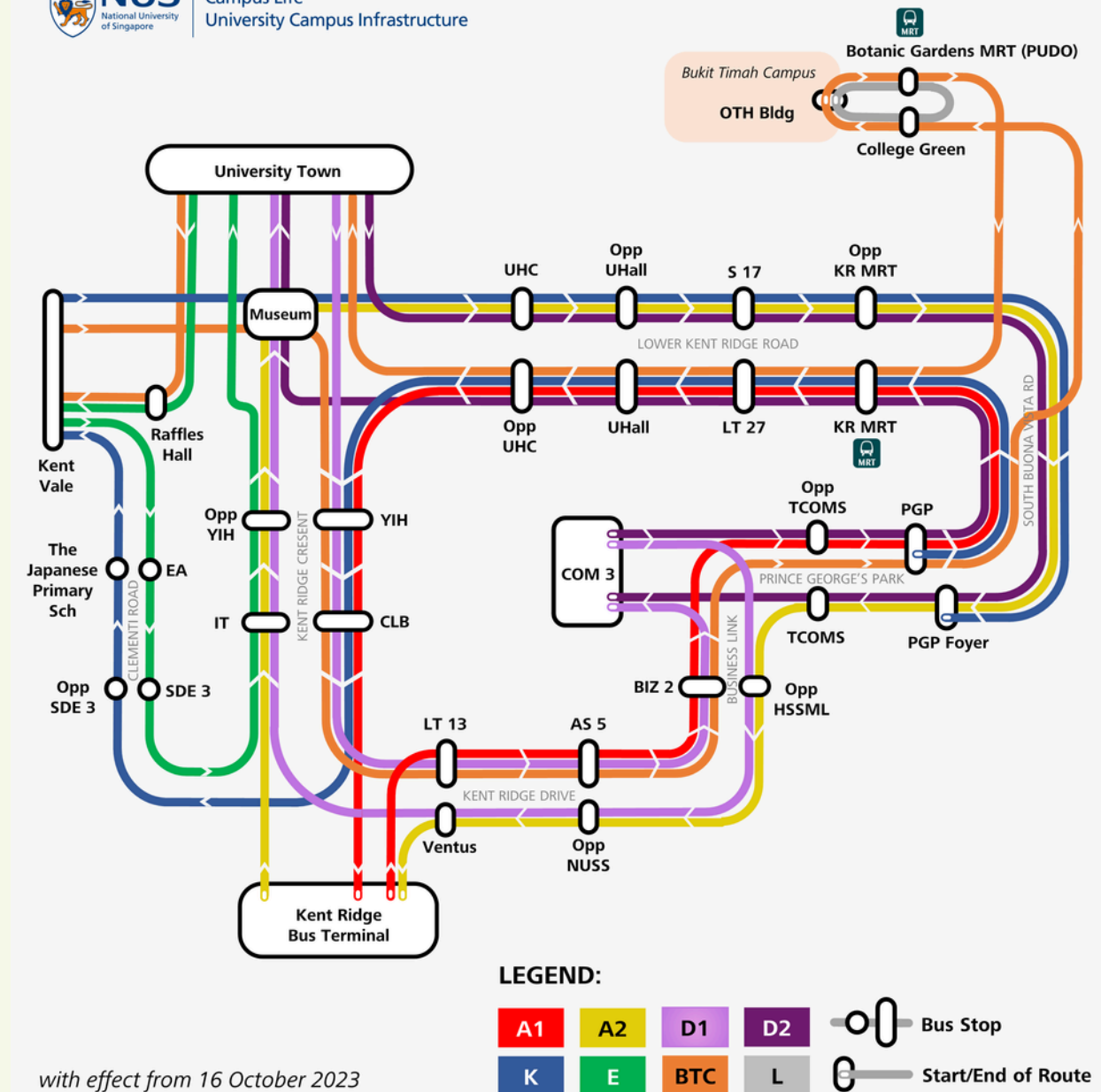
## 03

**Rate your ride** using the Mystery Rider form while you are on the bus, and stand to win \$20 worth of vouchers every month!

# NUS Internal Shuttle Bus NETWORK MAP



Campus Life  
University Campus Infrastructure



*with effect from 16 October 2023*



## Campus Facilities & Buildings



### NUS Libraries

Where books abound and the Wi-Fi is stronger than the sword! Whether you're diving into research or just looking for a cozy study corner, our 7 campus libraries have you covered. Find out more about [NUS Libraries](#).



### Sports & Recreation Facilities

From Olympic-sized swimming pools and climbing walls, to fitness gyms and badminton courts, we've got everything you need to get your game on. Find out more about [NUS sports & recreation facilities](#).



### Retail & Dining

With options that cater to every craving and budget, campus dining is hard to resist. Plus, student discounts. Find out more about [NUS retail & dining](#).

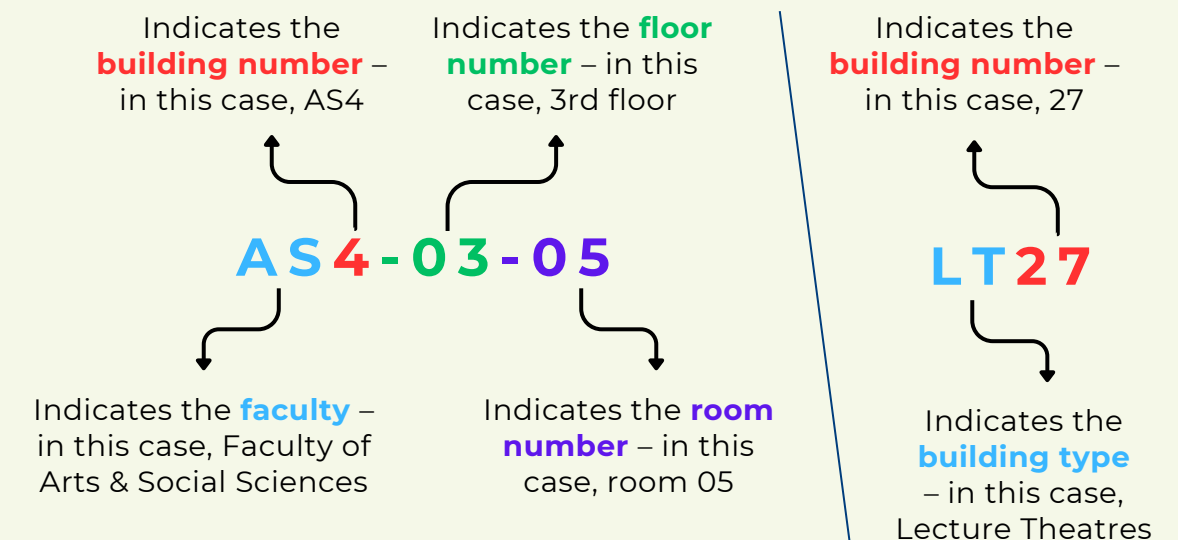


### University Health Centre

Whether you need a band-aid, a flu shot, or a medical examination, we're here to keep you in tip-top shape, and support your health and wellbeing during your time here at NUS! Find out more about [University Health Centre](#).

### Building Names

NUS is *huge*. The next time you are trying to figure out where you are or where you need to head to, remember that most venues within the Kent Ridge campus follow a certain naming convention.



### QUICK TIP: YELLOW CEILINGS

Forgot your umbrella? Find sheltered walking paths around campus easily by spotting these yellow ceilings.





## Campus Accommodation

At NUS, we offer 17 distinct hostels across 4 housing models for you to choose from. Step into a vibrant community where every day brings something new!

Living on campus isn't just about convenience; it's about connection, discovery, and growth. Don't miss your chance to be part of this dynamic experience. Apply for hostel accommodation during the application period and make NUS your home away from home.

Find out more about [residing on campus](#) (including rates and timeline).



### IMPORTANT: NUS ACCOMMODATION POLICIES

#### 01

Before you get all excited about living on campus, make sure to dive into the [Housing Agreement](#). It's basically your guide to being the best hostel resident — with important information such as the visitor policy, responsibilities and conduct expected of our hostel residents.

#### 02

Read the [Demerit Point Structure \(DPS\) for Housing Offences](#) in conjunction with the Housing Agreement. Think of it as your cheat sheet for staying on Santa's nice list while living on campus.





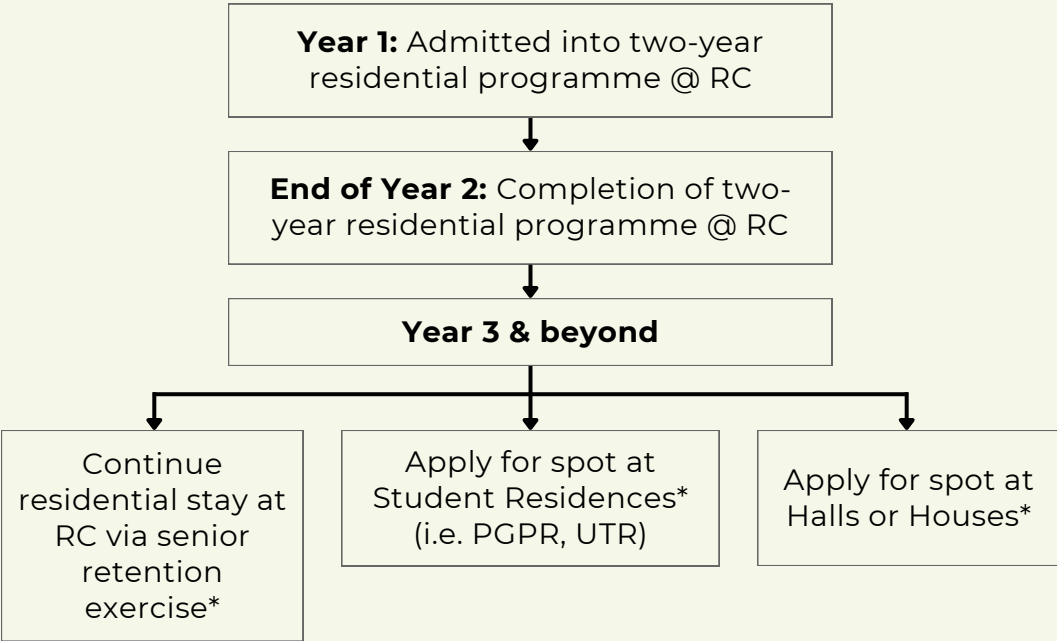
IMPORTANT:  
2025 HOSTEL EXERCISE DATES

<b>Halls of Residence</b> Kent Ridge Hall Sheares Hall Eusoff Hall King Edward VII Hall Raffles Hall Temasek Hall	<b>Application Deadline for Round 1</b> 17 June 2025, 11:59am  <b>Application Deadline for Round 2</b> 3 July 2025, 11:59am
<b>Houses</b> Pioneer House LightHouse Helix House Valour House	
<b>Residential Colleges</b> Acacia College College of Alice and Peter Tan Residential College 4 Tembusu College Ridge View Residential College	<b>Release of Results</b> All results will be made known by mid-July 2025.
<b>Student Residences</b> Prince George's Park Residence UTown Residence	<i>Student Residences are only open to undergraduate students from Year 2 onwards.</i>

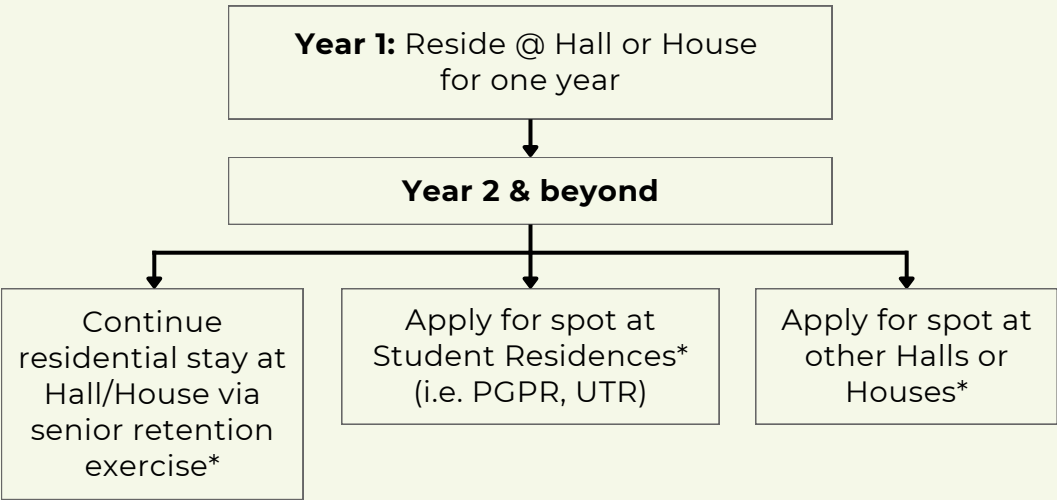
Find out more about [online hostel application, registration and acceptance period](#).

QUICK TIP:  
PLANNING YOUR NUS STAY

**Scenario #1:**  
After the two-year residential programme @ Residential College (RC)



**Scenario #2:**  
After a one-year stay @ Hall or House



Find out more about the [Residence Admission Scheme \(RAS\)](#) for stay in the hostels for Year 2 and beyond, or contact your hostel for more information on senior retention.

\*Limited spots available



## Student Finances



### Tuition Fees

NUS tuition fees are heavily subsidised by the Singapore Government, so you get top-notch education without a hefty price tag. Find out more about [NUS tuition fees](#), and [fee payment procedures](#).



### Financial Aid

Don't let financial challenges hinder your NUS education. NUS offers a range of loans, bursaries, and grants for students seeking financial assistance for tuition fees, hostel fees, overseas programmes, and living expenses.

Applications for financial aid are open throughout the academic year until end of Semester 2, before reading week. Find out more about [NUS financial aid](#).



### NUS Student Work Scheme (NSWS)

Think of the NUS Student Work Scheme (NSWS) as your backstage pass to campus life and career prep — all in one neat package. Gain real work experience without leaving university grounds. Find out more about [NSWS](#).

## IMPORTANT: FINANCIAL SCHEMES & PRIORITY OF PAYMENT

Ever wondered how payment works? Check out the order in which all the different financial schemes help cover your fees!

**01**

[MENDAKI Tertiary Tuition Fee Subsidy \(TTFS\)](#)

[Scholarship covering 100% of tuition fee](#)

**02**

[SkillsFuture Credit](#)

- For Singapore Citizens aged 25 years old and above
- For approved undergraduate programmes only

**03**

[Post-Secondary Education Account \(PSEA\) Scheme](#)

**04**

[CPF Education Loan Scheme](#)

- For full-time Singapore Citizen and Singapore Permanent Resident students
- Interest calculated from the time savings are withdrawn
- Repayment commences no later than 1 year after graduation

**05**

[MOE Study Loan](#)

- For eligible students
- Interest for interest-bearing loans calculated from time after graduation
- Repayment commences no later than 6 months after graduation

**06**

[MOE Tuition Fee Loan](#)

- For eligible students, subject to uptaking of MOE Tuition Grant
- Interest calculated from time after graduation
- Repayment commences no later than 2 years after graduation

**07**

**Bursaries**

**08**

**Others**

- GIRO bank account deduction, NETS, etc

Find out more about [NUS financial aid](#).



## Student Accessibility

At NUS, we are committed to fostering an inclusive and supportive environment for students with disabilities and accessibility needs.

The Student Accessibility Unit (SAU) provides dedicated and individualised support to ensure equitable access to learning, campus facilities, and student life. Be it personalised orientation, or access to assistive technology, we are here. Find out more about [NUS accessibility support](#).

## International Students



### International Student Starter Kits

Dive into NUS and Singapore with our starter kits! Tackle the pre-matriculation administrative checklist like a pro, get settled with first-week tips, and explore new horizons. Find out more about [NUS' support for international students](#).



### International Students Orientation

The only Orientation that brings together incoming international students from different faculties. Get acquainted with NUS Peer Connectors or NUSSU International Students' Buddy who'll help you navigate campus life, academics, and social events. Make friends, build connections, and feel at home from day one! Find out more about [NUS International Students Orientation](#).

## IMPORTANT: CODE OF STUDENT CONDUCT

Most importantly, kickstart your #NUSLife with the [Code of Student Conduct](#) — your trusty compass for staying classy!

NUS students are expected to maintain and uphold the highest standards of integrity and honesty at all times, as well as embrace community standards, diversity, and mutual respect for one another, both within the University and the wider Singapore community. The University expects students to uphold both the spirit and letter of the code at all times.





02

# Navigating Your Academic Journey





# The NUS Academic System



## NUS Academic Calendar

Each academic year (AY) starts in August and ends in July the following year. AY2025/2026 thus refers to the AY starting in August 2025 and ending in July 2026. Find out more about [NUS Academic Calendar](#).

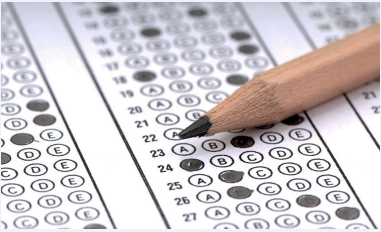
\*The Faculty of Dentistry and Yong Loo Lin School of Medicine operate on a slightly different academic calendar.



## Modular System

With the [NUS modular system](#), choose from a range of courses offered by our different Colleges, Faculties, and Schools.

\*Bachelor of Dental Surgery, Bachelor of Laws, and Bachelor of Medicine and Bachelor of Surgery students are currently not on the modular system.



## Grade Point Average (GPA)

For most courses you complete, you will receive a letter grade, which corresponds to a certain grade point.

Grade	Grade Point
A+	5.00
A	
A-	4.50
B+	4.00
B	3.50
B-	3.00
C+	2.50
C	2.00
D+	1.50
D	1.00
F	0

Your overall performance is evaluated via your grade point average (GPA), which is calculated every semester.

**GPA** = 
$$\frac{\text{Sum (Course Grade Point x Course Units)}}{\text{Sum (Course Units Counted Towards GPA)}}$$



## Degree Classification

Upon graduation, you will be awarded a degree classification. Depending on your College, Faculty or School, there may be additional requirements.

4-year Degree Programme	GPA Criteria
Honours (Highest Distinction)	4.50 & above
Honours (Distinction)	4.00 - 4.49
Honours (Merit)	3.50 - 3.99
Honours	3.00 - 3.49
Pass	2.00 - 2.99
3-year Degree Programme	GPA Criteria
Pass with Merit	3.00 & above
Pass	2.00 - 2.99

## QUICK TIP: MAJOR, COURSES, UNITS

### 01

- **Primary major:** Your main field of study. Everyone has one.
- **Second major:** Different field of study from your primary major, with less depth.
- **Minor:** Similar to second major, but less in-depth.
- **Specialisation:** A sub-discipline within your primary/second major.

### 02

- The classes you take are called **courses**.
- Each course has a unique prefix, followed by the course code.

The first digit indicates the course level – in this case, a Level 1 course

**CS1010**

Indicates the discipline – in this case, Computer Science

- On top of your major, all students are required to enroll in [General Education \(GE\) courses](#).

### 03

- Your workload is measured in **units**.
- One unit is equivalent to 2.5 hours of work (be it lectures, tutorials, or assignments) per week, so a four-unit course would require 10 hours of effort every week.
- On average, students take 20 units each semester.





## Course Registration

NUS uses a rules-driven, priority-based system to allocate courses. Undergraduate students will select course classes, tutorials, and labs, as well as drop courses within

[CourseReg@EduRec](#).

Psst — have you bookmarked the [CourseReg schedule](#)? Once you miss the date, there is no turning back! Find out more about [Course Registration](#).

\* Students from the Faculty of Dentistry and Yong Loo Lin School of Medicine do not need to participate in CourseReg for their classes.

## QUICK TIP: COURSE REGISTRATION

Submit Academic Plan Declaration via [Education Records System](#) (myEduRec) — at least **24 hours before CourseReg begins**.

### Start of CourseReg for Semester

#### Select Courses

1

#### Round 1

- Protected round
- Select courses that count towards programme requirements

2

#### Round 2

- Open round
- Select most courses (includes GEs)

3

#### Round 3

- All balance quotas merged to optimise class enrolment

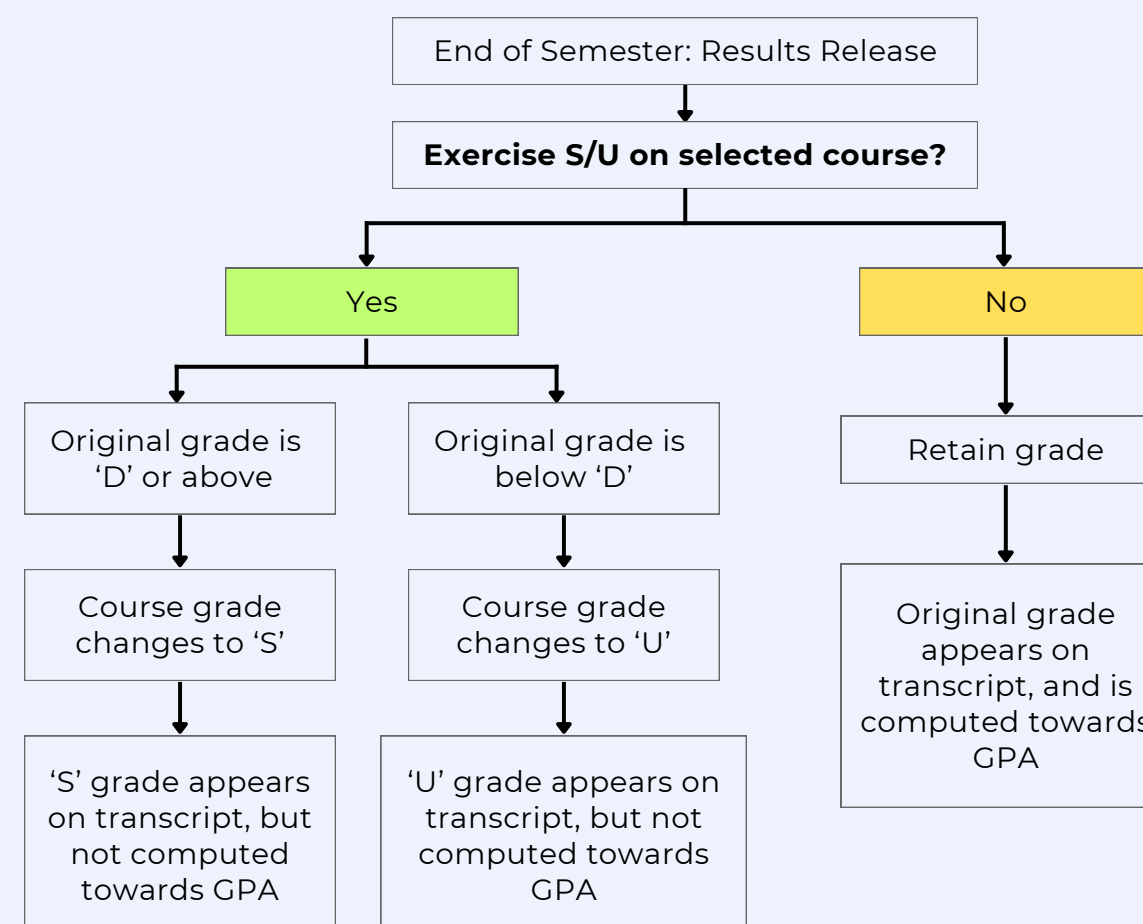
#### Select Tutorials/Labs

- For each round, students can select and rank 20 preferred Tutorial/Lab timeslots for all the courses that they are enrolled in.
- However, students must ensure that there are no timetable clashes between the ranked preferences and his/her existing class schedule.

## IMPORTANT: SATISFACTORY / UNSATISFACTORY OPTION (S/U)

Want to explore new courses but concerned about your GPA? The [Satisfactory / Unsatisfactory \(S/U\) option](#) is here to save the day!

In general, students may exercise the S/U option for up to 32 course units during their first year. After which, if not fully utilised, the S/U option may still be exercised for up to 12 course units.



## Leave of Absence

In general, students may be granted [leave of absence \(LOA\)](#) for medical, academic, or personal circumstances.

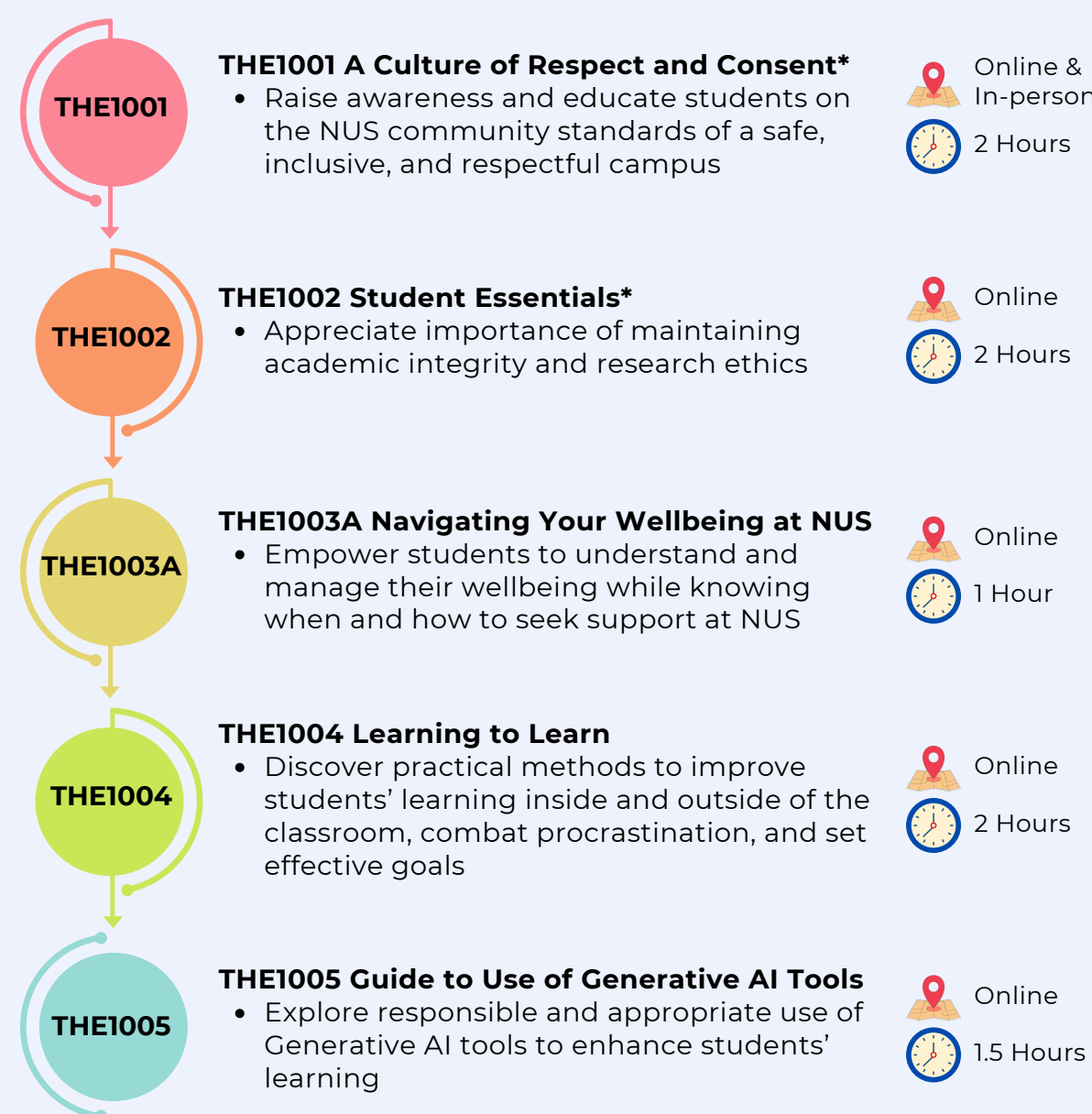
Thinking of applying for LOA? Consult your Department or Faculty advisor on the possible impact to your academic programme.



## Transition to Higher Education (T.H.E.) Programme

We know, higher education can be a very new and daunting experience. But fear not, because we've got your back with the **Transition to Higher Education (T.H.E.) Programme**. A specially curated starter kit for your NUS adventure, it's packed with all the essentials to help you navigate your first year with flair.

Find out more about the [T.H.E. Programme](#).



Please note that courses marked with an asterisk (\*) are compulsory.

## Technology & AI in Education



### Digital Assessments

Digital assessments are commonly used in NUS courses for quizzes, tests, and exams. It is important that you have:

- A device that meets the [minimum system requirements and battery life specified](#)
- Administrator rights on the device to install Exemplify — the required digital assessment software

Students who are new to Exemplify are strongly advised to attend one of the [common briefing sessions](#).

Find out more about [NUS digital assessments](#).



### Use of AI Tools

AI tools can be used for take-home assessment tasks, provided you acknowledge and attribute such use. Your work will be evaluated on merit, and AI use (or non-use) will not be taken into consideration, unless the assignment specifically requires the use of AI. For effective use of these tools in your academic work, do consult [NUS AI guidelines](#).

### IMPORTANT: PLAGIARISM POLICY

As an academic institution, NUS expects all students to maintain the highest standard of academic integrity. We take a stern view against acts of academic dishonesty, as laid out in the [NUS Plagiarism Policy](#). So, remember, honesty is the best policy. Plus, it's way more original!



03

# Designing Your Student Life





## The NUS Orientation



### [Freshman Orientation Programmes](#)

**Jun - Aug 2025**

- More than 80 camps organised by Colleges/Faculties/Schools, hostels, and student organisations
- A teaser to vibrancy of student life experiences at NUS

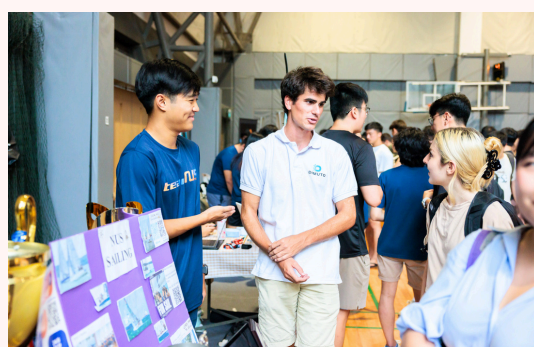


### [RAG & Flag Day](#)

**Flag Day: 26 July & 2 Aug 2025**

**Flag Carnival & RAG Day: 8 Aug 2025, UTown**

- Flag Day: Collect donations from public
- Flag Carnival: Run fund-raising activities
- Receiving-And-Giving (RAG) Day: Showcase performances and floats as a gesture of appreciation for public support



### [Student Life Fair](#)

**13-14 Aug 2025, UTown**

- Over 200 booths set up by clubs, societies, and interest groups to showcase the full range of student life activities
- Discover new interests and meet new friends



### [Supernova](#)

**15 Aug 2025, UTown**

- Annual electrifying music and dance festival-like outdoor event with concerts and performances put on by a variety of groups
- Gives student performers the chance to show off their talents

## Engage & Explore

Kickstart your NUS adventure with a splash of fun! Explore the different activities that match your vibe, join in the fun, and dive into the excitement of #NUSLife.



### [Sports](#)

Grab a racket, kick a ball, or make a splash in the pool! Join a varsity sport team or a Learn-to-Play programme and unleash your inner athlete.



### [Performing Arts](#)

Always wanted to dance, sing, shoot a film, or play an instrument? NUS student arts groups have got you covered. Learn the basics or become the next superstar!



### [Community Involvement](#)

Want to bring smiles or plant the next big tree? Join a community service group and sprinkle some joy to make the world a better place!



### [Clubs & Groups](#)

Motoring, Korean culture, animation — there's something for everyone. Browse our long list of interest groups and discover amazing student life!



### [Dabble & Discover](#)

Fun, beginner-friendly activities to explore new hobbies and make unforgettable memories. So, go ahead and dabble!







## Student Wellness



### PitStop

Take a chill pill at NUS PitStops! Unwind with massage chairs and calming tunes, or get your adrenaline going with Nintendo Switch games with friends. Support resources are also available. Find out more about [PitStops](#).



### Wellness Programmes

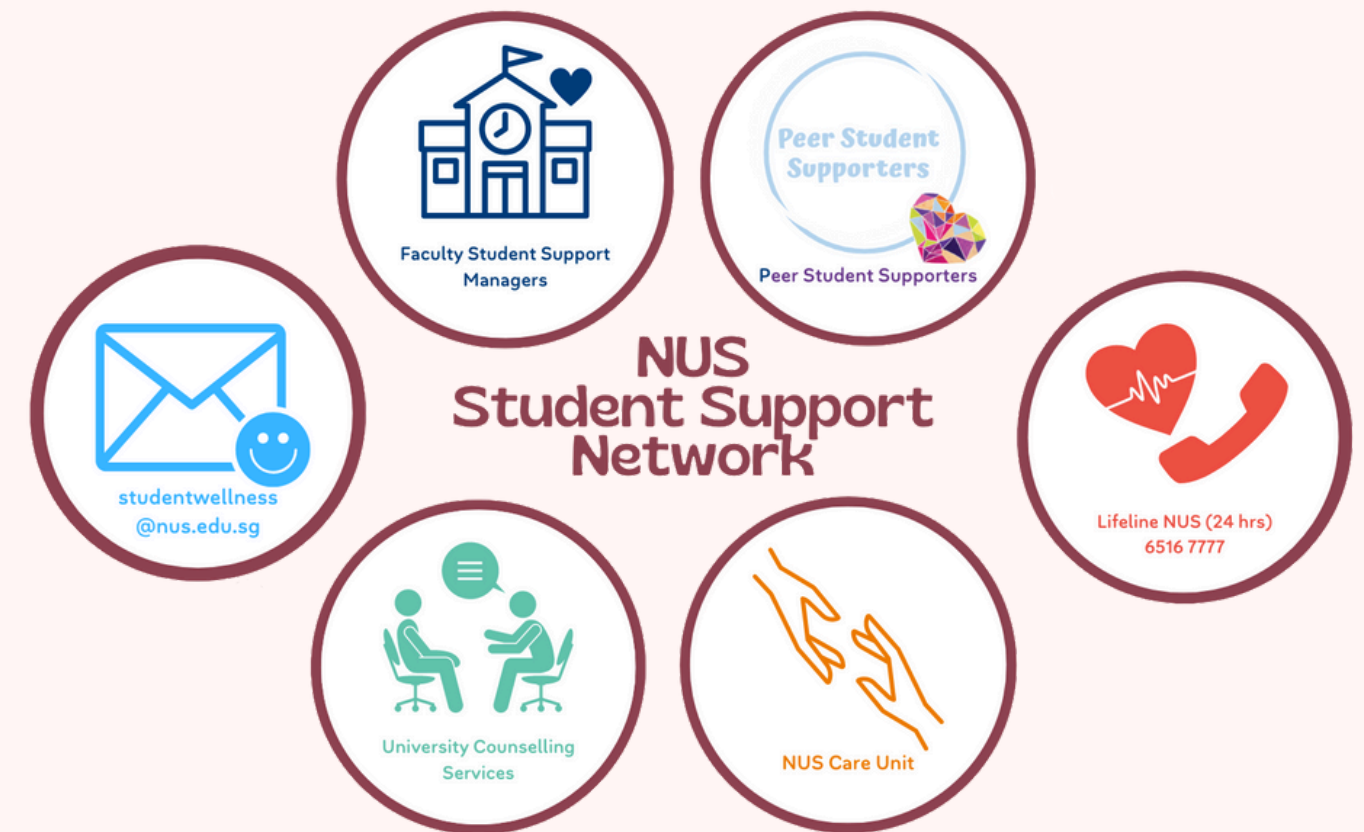
Prioritise your peace of mind! Explore our range of activities for students, crafted to boost awareness, resilience, and support in the NUS community. Plus, contribute to campus wellness efforts by joining the Peer Student Supporters (PSS) programme. Find out more about the different [wellness programmes](#).



### NUS Student Support Directory

Embarking on your university journey is more than just academics – it's a transformative experience that shapes your personal and professional growth.

Feeling low or overwhelmed and need someone to talk to? Know a friend or someone who might need support? Reach out to us via the [NUS Student Support Directory](#).





04

# Useful Contacts







## Useful Contacts

### Campus Emergency and Security

 **For Emergencies Only:** +65 6874 1616 (24 hours)


 [ces@nus.edu.sg](mailto:ces@nus.edu.sg)

 To report or check for a lost item, visit [NUS Lost and Found](#)

 To report crimes or suspicious activity: please call emergency hotline or visit [Integrated Case Management System \(ICMS\)](#)

### University Counselling Services


 <https://nus.edu.sg/hwb/ucs/>


 For bookings & enquiries: [ucs@nus.edu.sg](mailto:ucs@nus.edu.sg)

 **24 Hours Psychological Support - Lifeline NUS:** +65 6516 7777

### University Health Centre

 <https://www.nus.edu.sg/uhc/>

 For clinical services: [uhc\\_health@nus.edu.sg](mailto:uhc_health@nus.edu.sg)


 For clinical services: +65 6601 5035 (Weekdays, Office Hours)

### NUS Care Unit, Office of the Provost

 <https://care.nus.edu.sg/>

 [ncu\\_help@nus.edu.sg](mailto:ncu_help@nus.edu.sg)

 Helpline: +65 6601 4000 (24 hours)

 Walk-in: University Health Centre #B1-09 (Weekdays, Office Hours)

### NUS Centre for Future-ready Graduates (CFG)

 <https://nus.edu.sg/cfg/>

### NUS Enterprise (ETP)

 <https://enterprise.nus.edu.sg/>

### NUS Global Relations Office (GRO)

 <https://www.nus.edu.sg/gro>

### NUS Libraries (LIB)

 <http://lib.nus.edu.sg/>

### NUS Museum and Baba House

 <https://museum.nus.edu.sg/>

 <https://babahouse.nus.edu.sg/>

### NUS Office of Student Affairs (OSA)

 <https://osa.nus.edu.sg/>

### NUS Office of the University Registrar (OUR)

 <https://www.nus.edu.sg/registrar>

### NUS Students' Union (NUSSU)

 <https://nussu.net/>



**Singapore Police Force (SPF)**  
For Emergencies Only: Call 999 || SMS 71999  
<https://www.police.gov.sg/>

**Singapore Civil Defence Force (SCDF)**  
For Emergencies Only: Fire Engine/Ambulance: 995  
Non-Emergency Ambulance: 1777  
<https://www.scdf.gov.sg/>

**Samaritans of Singapore (SOS)**  
Call 1767 || WhatsApp +65 9151 1767  
<https://www.sos.org.sg/>





## **AY2025/26 Undergraduate First-Year Guide**

Published on 30 May 2025

The NUSOne team would like to thank all NUS departments that have contributed to this guide.

All information contained is correct at the time of publication. Please refer to the respective department websites for updates.

For any questions regarding the First-Year Guide, please contact [nusone@nus.edu.sg](mailto:nusone@nus.edu.sg).