

APPLICATION GUIDE

SINGAPORE-CAMBRIDGE

GCE 'A' LEVEL STUDENTS

ACADEMIC YEAR 2020-2021

NATIONAL UNIVERSITY OF SINGAPORE

OFFICE OF ADMISSIONS | UNIVERSITY TOWN, 2 COLLEGE AVENUE WEST, #01-03, SINGAPORE 138607

CONTENTS

	Page
Before you start	2
▪ Online Application Form Type I	
▪ Online Application Form Type II	
Applying to NUS	
Online Application Form Type I	
▪ How to apply using Online Application Form Type I	3
▪ Flowchart on application process for Online Application Form Type I	5
Online Application Form Type II	
▪ How to apply using Online Application Form Type II	6
▪ Flowchart on application process for Online Application Form Type II	8
Application Overview	9
▪ Application timeline	
▪ Application outcome	
▪ Reply to offer	
▪ Ask Admissions	

Before you start...

There are **two types** of online application forms - **Online Application Form Type I** and **Online Application Form Type II**.

(A) Online Application Form Type I.

You should be using Online Application Form Type I if you are a:

- School candidate who has taken the Singapore-Cambridge GCE 'A' Level examination in 2019, and been issued a pre-assigned a Personal Identification Number (PIN) by NUS; or
- Full-time National Servicemen (NSF) who has reserved place at NUS and wishes to apply for a change in course in 2020

The PIN (8 alpha-numeric character; case sensitive)
Letter will be sent to your postal address by Feb 2020.

If you are a school candidate, and did not receive the PIN letter from NUS. You can still apply for admission using the Online Application Form Type II.

You can apply using the PIN from your previous application (the one that you have reserved a place with).

Why use Online Application Form Type I?

- The form will be pre-loaded with your personal particulars and academic results
- You can submit your admission application after ensuring accuracy of the pre-loaded information and completing other important information such as course choices
- This facilitates faster processing and may speed up the application outcome

(B) Online Application Form Type II.

You should be using Online Application Form Type II if you:

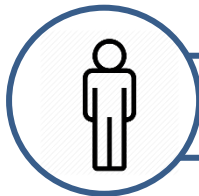
- Do not fall under any of the two categories of students indicated in (A); or
- Are a Private Candidate for the Singapore-Cambridge GCE 'A' Level examination

Selection of applicants for undergraduate courses will be based on academic merit. Due to keen competition for limited vacancies, the choice order of courses will also determine the selection outcome. Hence, applicants are advised to list out their course choices in their order of preference.

Applying to NUS?

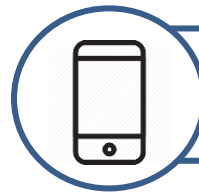
Start your application – by completing the [Online Application Form Type I](#):

Information you need to **VERIFY**:



Personal Particulars

Verify & fill in non grey-out fields



Contact Information

Verify & fill in non grey-out fields

You are strongly encouraged to provide a valid Singapore mobile number to receive SMS notification(s) for updates to your application status and outcome



Academic Results

Input the relevant subjects (Additional Mathematics, Physics) grades attained at your Integrated Programme Secondary 4 level (if you do not have the relevant 'A' Level subject to fulfil [course pre-requisites](#))

Sections you need to **COMPLETE**:



University/ Tertiary Education

You should not be using this application form if you are a current or former University student.



Confirmation of Particulars & Results

You should indicate the changes required to your particulars and results should there be any discrepancies.



Outstanding Achievements

For applicants who wish to be considered under the [Aptitude Based Admissions Scheme](#)*

*The University sets aside places for consideration candidates who demonstrate a strong interest or aptitude for the courses they have applied for under the Aptitude Based Admissions Scheme. This is an opportunity to showcase your demonstrated ability and interest, work experience, leadership, community service and exceptional talent, subject to a minimum level of academic competence. The 2,000 characters Personal Statement is where you exemplify your ambitions, skills and experiences to the faculties/schools on why you should be selected for your choice of study and how you will make a valuable contribution to the university.

Sections you need to **COMPLETE** (continued):



Choice of Courses

You can apply for a maximum of eight single degree choices (Part a) and another eight double degree, concurrent degree, double major or minor programmes (Part b).



National Service (NS) in Singapore

If you are required to fulfill the mandatory NS in Singapore, you have to indicate your status accordingly.



Health and Support

Applicable if you have past or current medical or mental health condition and/or physical disabilities.



Next-of-Kin Information

A contact person in cases of emergency.



Personal Identification Number (PIN)

You need to **reset** the confidential 8-digit alphanumeric PIN*.



Application Fee

The S\$10 application fee can be paid via Credit Card, Bank draft/cheque or AXS.



Financial Aid

This is to indicate your intention to apply for financial aid. You need to submit a separate online application for it.



Other Information

Please indicate clearly if you have convicted of an offence.



Tuition Grant

Singapore Permanent Residents and International Students are to indicate their intention to apply for Tuition Grant. Singapore Citizens should declare accordingly.

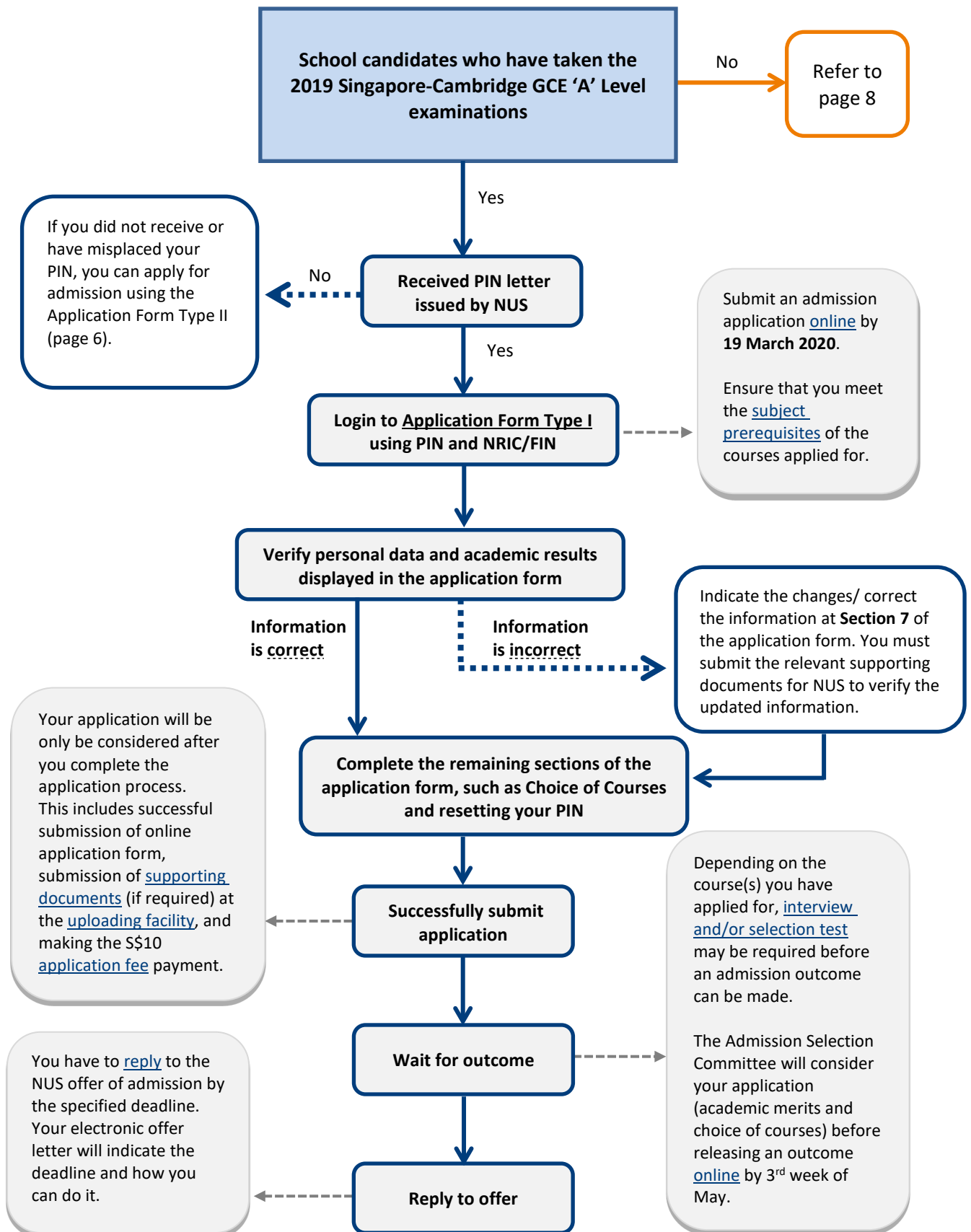


Declaration

This section requires your declaration that all the information provided in your application is correct.

*The PIN and Application Number will allow you to track your application status and outcome, as well as to submit supporting documents online at <https://myaces.nus.edu.sg/uasonline/Login>.

Application Process for Online Application Form Type I:



Start your application – by completing the **Online Application Form Type II:**

Sections you need to COMPLETE:



Personal Particulars

For verification purposes, it is important to fill in your full name and nationality as in NRIC or Passport.



Contact Information

Please provide a valid email address in order for the University to contact you when necessary. You are also encouraged to provide a valid Singapore mobile number to receive SMS alert for admission updates.



Academic Results

You need to provide your secondary and Singapore-Cambridge GCE 'A' Level results. This includes your Mother Tongue Language (MTL) and Project Work grades.



University/ Tertiary Education

You should not be using this application form if you are a current or former University student.



Outstanding Achievements

For applicants who wish to be considered under the [Aptitude Based Admissions Scheme*](#)



Choice of Courses

You can apply for a maximum of eight single degree choices (Part a), and another eight for double degree, concurrent degree, double major or minor programmes (Part b).



National Service (NS) in Singapore

If you are required to fulfill the mandatory NS in Singapore, you have to indicate your status accordingly.



Health and Support

Applicable if you have past or current medical or mental health condition and/or physical disabilities.



Next-of-Kin Information

A contact person in cases of emergency.

*The University sets aside places for consideration candidates who demonstrate a strong interest or aptitude for the courses they have applied for under the Aptitude Based Admissions Scheme. This is an opportunity to showcase your demonstrated ability and interest, work experience, leadership, community service and exceptional talent, subject to a minimum level of academic competence. The 2,000 characters Personal Statement is where you exemplify your ambitions, skills and experiences to the faculties/schools on why you should be selected for your choice of study and how you will make a valuable contribution to the university.

Sections you need to **COMPLETE** (continued):



Personal Identification

Number (PIN)

You need to create a confidential 8-digit alphanumeric PIN*.



Application Fee

The S\$10 application fee can be paid via Credit Card, Bank draft/cheque or AXS.



Financial Aid

This is to indicate your intention to apply for financial aid. You need to submit a separate online application for it.



Other Information

Please indicate clearly if you have convicted of an offence.



Tuition Grant

Singapore Permanent Residents and International Students are to indicate their intention to apply for Tuition Grant. Singapore Citizens should declare accordingly.

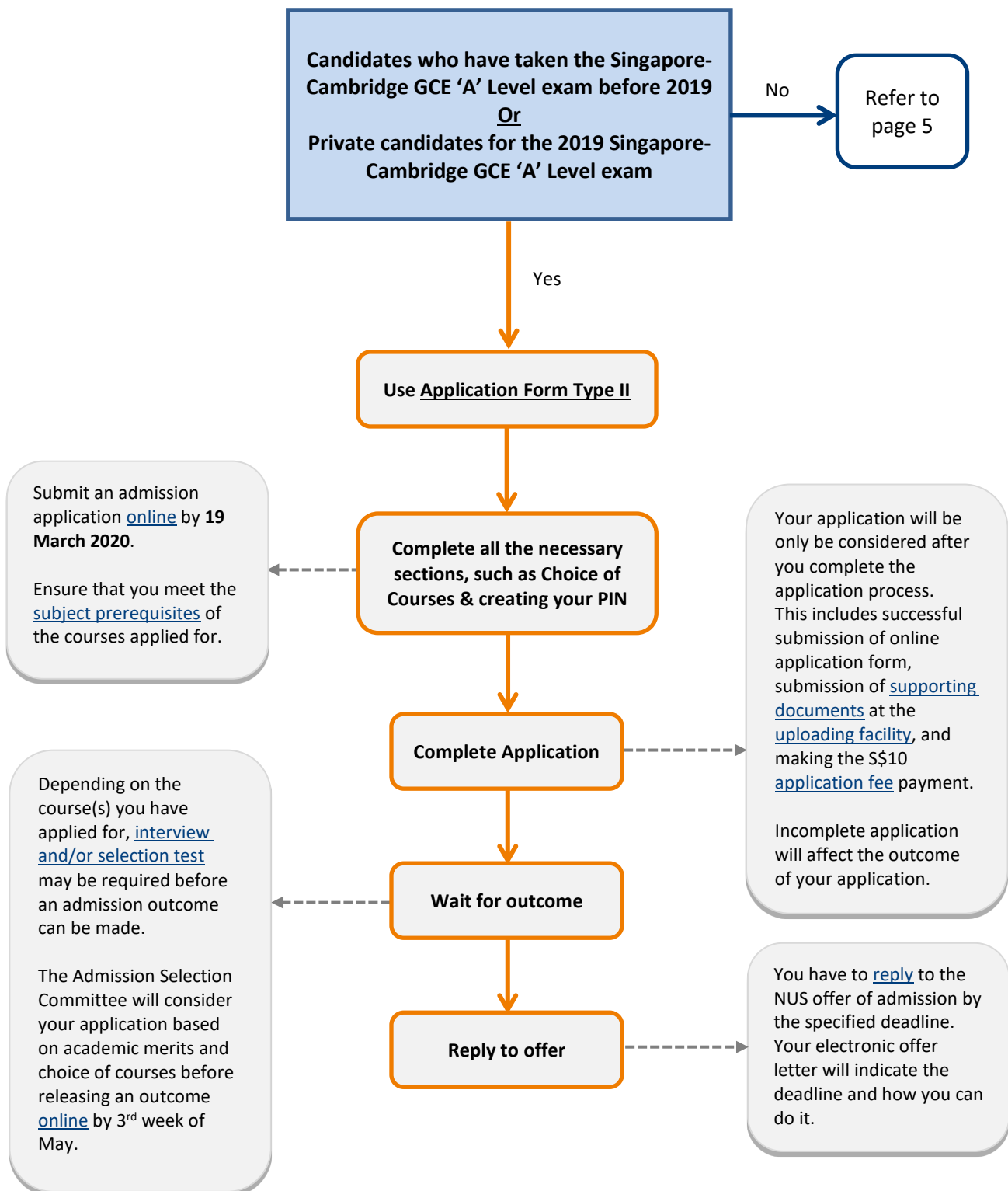


Declaration

This section requires your declaration that all the information provided in your application is correct.

*The PIN and Application Number will allow you to track your application, as well as to submit supporting documents online at <https://myaces.nus.edu.sg/uasonline/Login>.

Application Process for Online Application Form Type II:



Application Overview

You will need to complete all relevant sections of your application before submitting it online. Do make sure you have sufficient time to apply, submit supporting documents (if applicable) and make application fee payment online by **19 March 2020**.

You can start applying 3 working days after the release of the 2019 Singapore-Cambridge GCE 'A' Level results.

Please refer to the [Application Checklist](#) for the list of supporting documents to be submitted if you are applying using the Application Form Type II.



The Admissions Selection Committee will review the applicant's academic merits and choice of courses before making an offer of admission to the student.

Some courses require additional assessments such as interviews, selection tests and portfolios – you will be notified accordingly if you need to attend one.

The admission offer letter will be available online after you have been offered admission. The offer letter will indicate how and when to reply to the offer. Don't miss the deadline!



Visit the admissions [website](#) for more details.

Alternatively, you may send us your questions at www.askadmissions.nus.edu.sg!