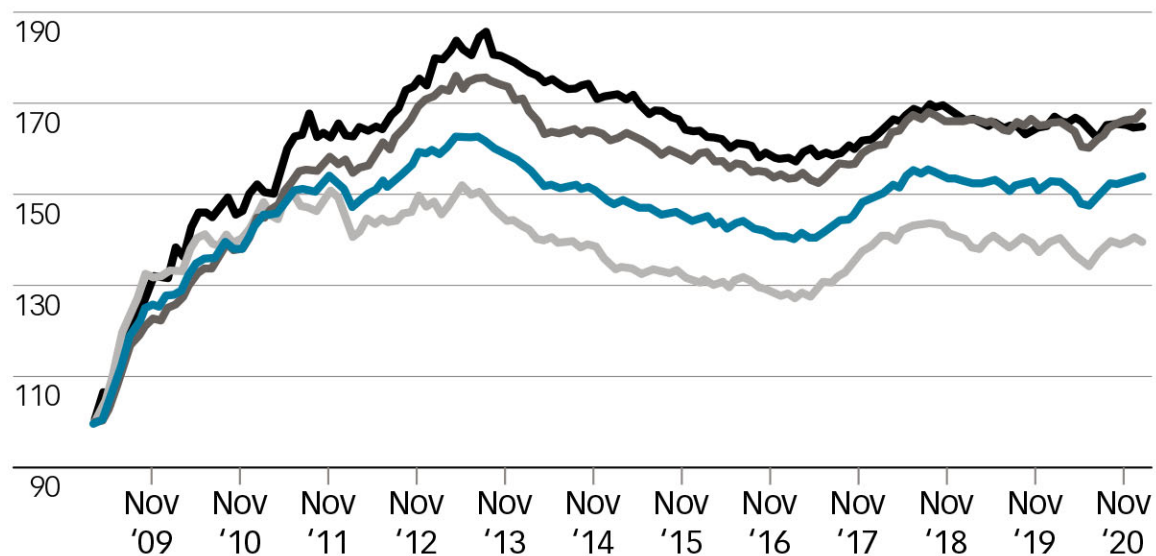


Eye on economy: Singapore property

Revised value of NUS SRPI for Jan 2021

- **NUS SRPI Overall**
- **NUS SRPI Central** (excluding small units)
- **NUS SRPI Non-Central** (excluding small units)
- **NUS SRPI Small**



NUS SRPI BASKET AS AT DEC 2019	INDEX VALUE (MARCH 2009 = 100)	MONTH-ON-MONTH CHANGE
NUS SRPI Overall	154.1	0.6%
NUS SRPI Central (excluding small units)	140.2	-0.2%
NUS SRPI Non-Central (excluding small units)	168.3	1.1%
NUS SRPI Small	165.6	0.6%

Note: The Institute of Real Estate and Urban Studies at the National University of Singapore (NUS) launched the NUS Singapore Residential Price Index in March 2010. It is a transactions-based index that tracks the month-on-month price movements of private non-landed residential properties in Singapore.

Sources: URA, NUS Real Estate