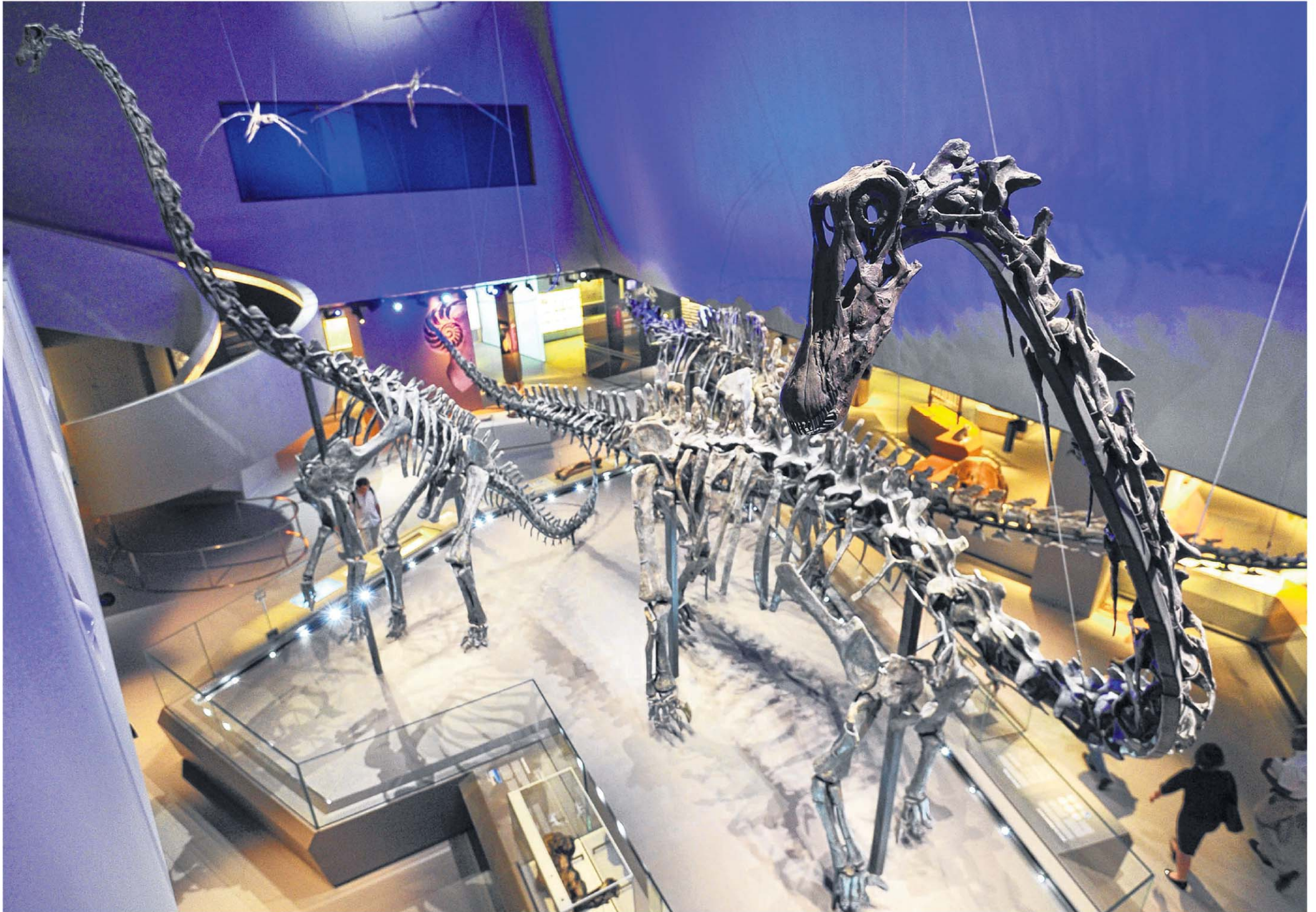


Calvin Yang checks out what's new at the six local universities



The Lee Kong Chian Natural History Museum's many rare specimens include fossils of diplodocid sauropod dinosaurs. PHOTO: LIM YAOHUI FOR THE STRAITS TIMES



Artist's impression of Yale-NUS College in Dover Road, spread over 63,000 sq m. PHOTO: YALE-NUS COLLEGE

National University of Singapore Presenting top-notch facilities for scientific research, the arts

Singapore's first natural history museum, situated at the National University of Singapore (NUS) campus in Kent Ridge, opened its doors to the public in April.

The Lee Kong Chian Natural History Museum, located next to the University Cultural Centre, is home to some 2,000 specimens, including the fossils of three diplodocid sauropod dinosaurs.

Yale-NUS College – a tie-up between the institution and Yale University in the United States – will start the new semester at its 63,000 sq m campus in Dover Road. It recently moved there from its interim location at the NUS University Town.

The new facilities will include well-equipped science labs as well as art and dance studios.