

For all intents and purposes

From tableware to tabao-ware, projects by NUS's School of Design and Environment students promise to make life easier and more interesting. **By Tay Suan Chiang**



Flati by Karyn Lim

Flati is a series of bags (above) that appear and disappear. Transformation is explored in material and form, says its designer Karyn Lim (right), 23. In their flat state, these bags resemble the single sheet of laminate that they are made of. In one swift motion guided by a pattern of cuts, they transform into a sculptural accessory.

Ms Lim says she was inspired by the process of design, its promise of possibilities and the discoveries it brings. "These are the things that motivate me as a designer. Experimenting with the use of sheet materials in the past year, I try to celebrate the material and perhaps push its limits."



SINGAPORE design talents are being spotted at a young age, going by the promising work on show now at the National Design Centre. A modular acoustic cloud system that absorbs ambient noise and a first-aid tool bag for organised storage

SoundCARE by Nigel Geh

Student Nigel Geh (right) wants to help patients in ICU have a more comfortable time. SoundCARE (right) is an ambient monitoring system that aims to prevent detrimental psychological disorders, such as delirium, caused by stressful ICU conditions. An imaging device assesses patients' consciousness and agitation levels by tracking head movement.

"Nurses are alerted when patients are awakening or becoming agitated, so they can attend to them immediately," says Mr Geh, 25. The device concurrently emits soothing natural sounds to calm patients down and even aids in pain management. "By using natural sounds such as the chirping of birds, patients experience improved recovery in a less sterile and more natural ICU environment."



HeatStik by Naroth Murali

Fourth year student Naroth Murali, 26, says: "HeatStik represents the future of small, portable and energy efficient devices in the kitchen." Using a combination of a heating coil, a fan and a borosilicate glass attachment, HeatStik (right) can be used on any open dish to reheat or bake food items.

Mr Murali (right) says the inspiration behind HeatStik was "to create a kitchen appliance that would appeal to serious home chefs who desire precise temperature control, and at the same time be energy efficient to suit the needs of smaller households".



Tabao-ware by Christabel Goh

You've heard of Tupperware, but how about Tabao-ware? The name is a play on *tabao* or takeaway, which is what most people who don't cook do.

"Tabao-ware is a smart multi-function compact solution that enhances the dining experience of takeaway meals," says Ms Goh, 23. "It allows for hassle-free separation, storage, microwave heating and consumption of various kinds of Asian food, such as rice, prata, *nonya kuehs* and especially noodle soup."

Tabao-ware (left) stores the noodles and soup separately, retaining the texture of the noodles even after a long period of storage. Ms Goh designed the product with fellow students Sookyung Bae and Magdalene Huang. "Before consumption, insert chopsticks into the holes to lower the strainer into the bottom soup container and allow the soup to gush into the noodles through the strainer holes," says Ms Goh.



PHOTO: (left, L-R) Ms Goh, Ms Bae and Ms Huang



uNit by Viki Yap

Do you have a messy desk? If so, uNit could make it less so. Viki Yap (left), together with fellow students Yeo Yong Seng and Chen Zhuo, came up with uNit (left), a pegboard stationery organizer. Rather than have things lying on the desk, free up table space by moving clutter onto the wall. The pegboard system allows users to "pin" stuff onto the wall, while keeping them still in view.

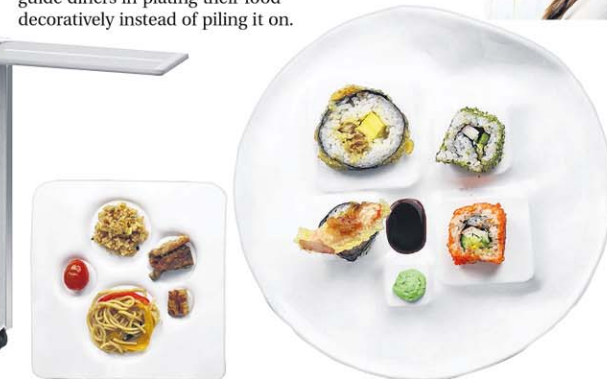


"uNit is created to be customisable and fun for users to arrange and fit our components in different ways and permutations to hold their table-top items, whichever way they like," says Ms Yap, 23.

STAK by Lim Ze Jie

Two incidents inspired student Lim Ze Jie (below), 26, to design STAK. Packing a suitcase usually requires bending or squatting, which Mr Lim's mother found hard to do, due to a weak leg. And when Mr Lim was travelling in Japan, packing his suitcase in the cramped hotel room proved to be a challenge.

So he decided that something had to be done. The result is STAK (right), a stand and pack suitcase targeted at the elderly who may have trouble bending or squatting down when packing due to weak leg and back muscles or a prior leg or back injury. STAK luggage has compartments that can be lifted up to allow users to pack their luggages while standing. These compartments have adjustable and removable dividers to accommodate different types and sizes of clothing and items.



Itadakimasu by Chew Mei Jun

Itadakimasu, or "I humbly receive" in Japanese, is a series of tableware designed to raise awareness about food wastage at Japanese buffet restaurants. Designer Chew Mei Jun (right), 23, says that the motivation comes from the *kiasu* culture deeply entrenched in Singapore. "Through the notion of Itadakimasu, the goal is to drive people to subconsciously reflect on the value of food while they consciously discern the amount and type of food to place on their buffet plate," she says.

The Itadakimasu tableware design (below) veers towards minimalism, with distinct raised "podiums" to guide diners in plating their food decoratively instead of piling it on.



Snuggle by Gloria Ngiam

Student Gloria Ngiam, 22, would often hug her laptop while she napped on the train. With that in mind, she created Snuggle, a laptop case which doubles as a pillow. "Snuggle was designed around the idea of having a balance between work and relaxation," says Ms Ngiam. Snuggle is made using micro suede and expandable urethane foam.

"The final design is a light-hearted response to the trend of work exhaustion which is prevalent in many metropolitan cities," she adds. "As a young designer, I feel that it is very important for design to be empathetic towards the human condition. Only then can it serve society by having people relate to it."



NUS Industrial Design Show 2015 is on at the National Design Centre, 111 Middle Road. Exhibition hours: today, from 9am to 9pm, and tomorrow, from 9am to 1pm

taysc@sph.com.sg
@TaySuanChiangBT