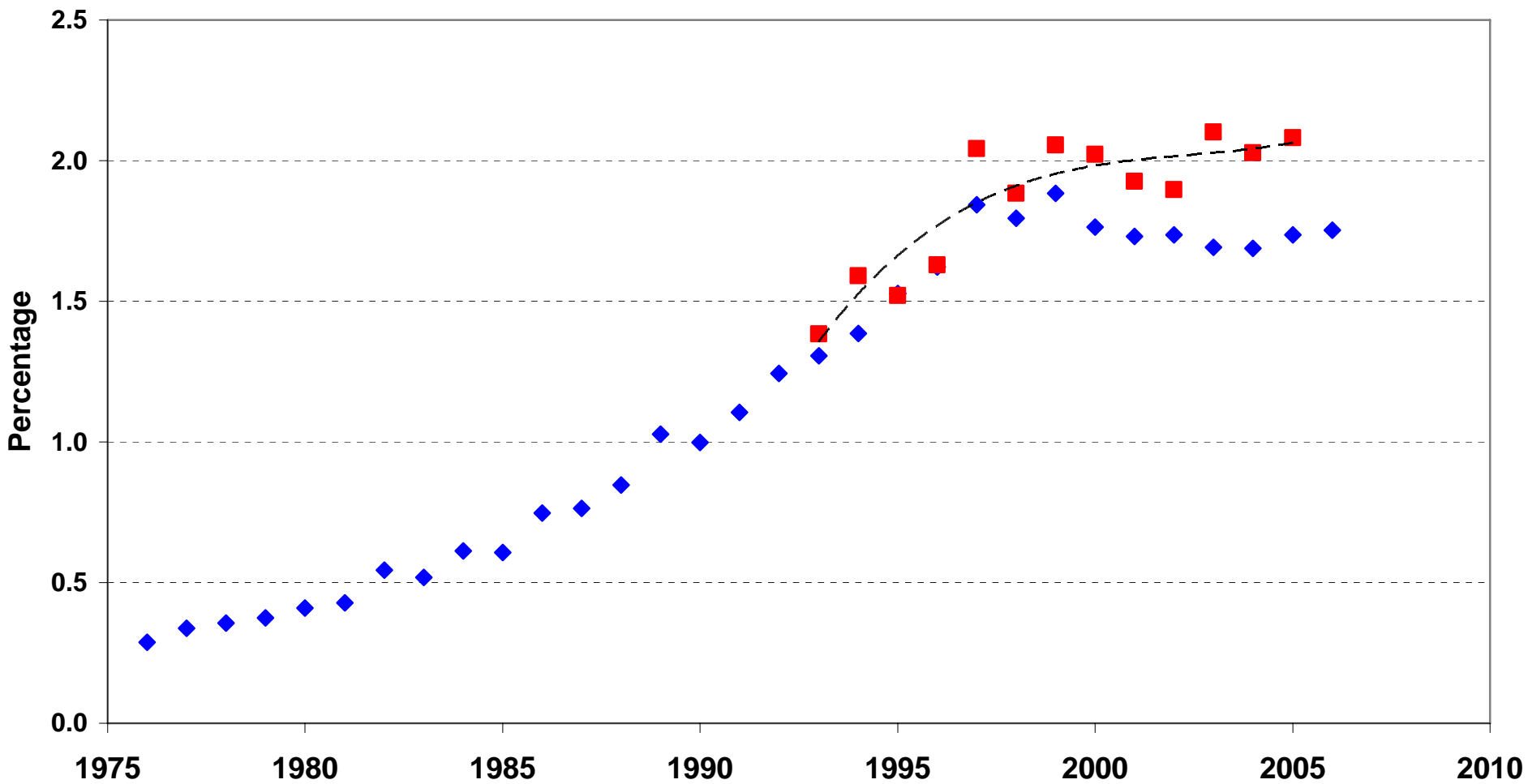
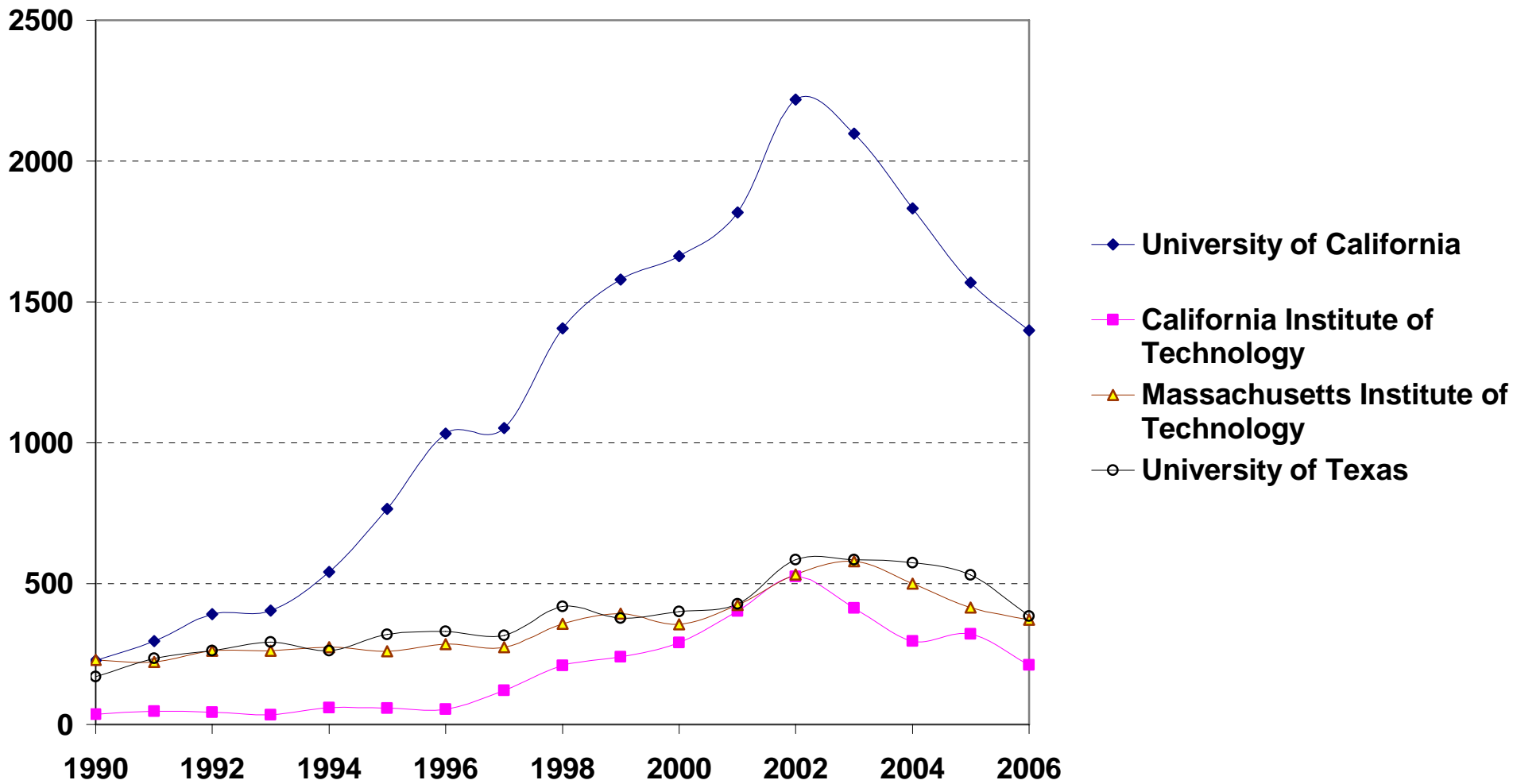


Loet Leydesdorff & Martin Meyer, Triple Helix indicators of knowledge-based innovation systems, *Research Policy* 35(10), 1441-1449, 2006; at p. 1448

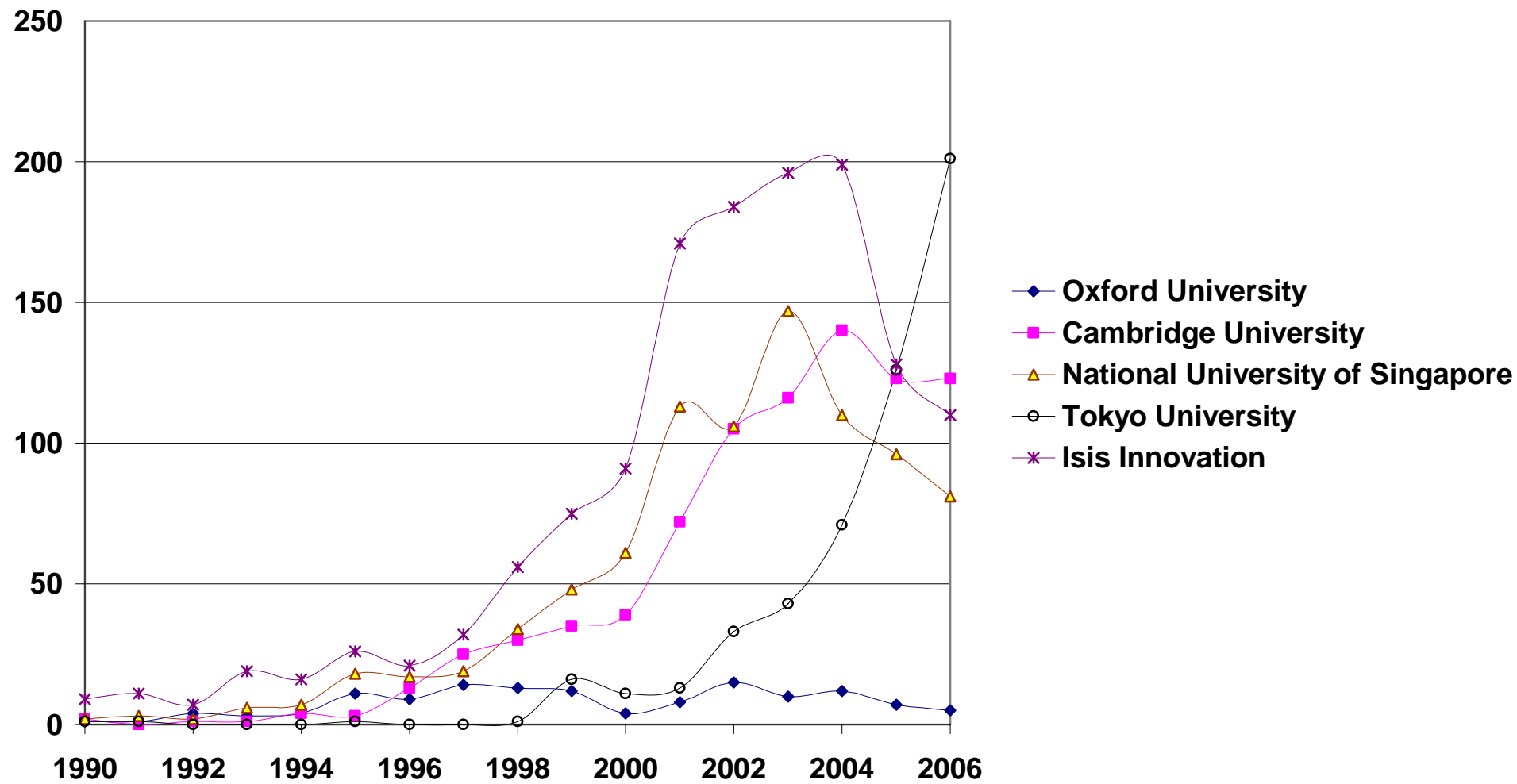
AUTM data until 2005; **USPTO** data until 2006



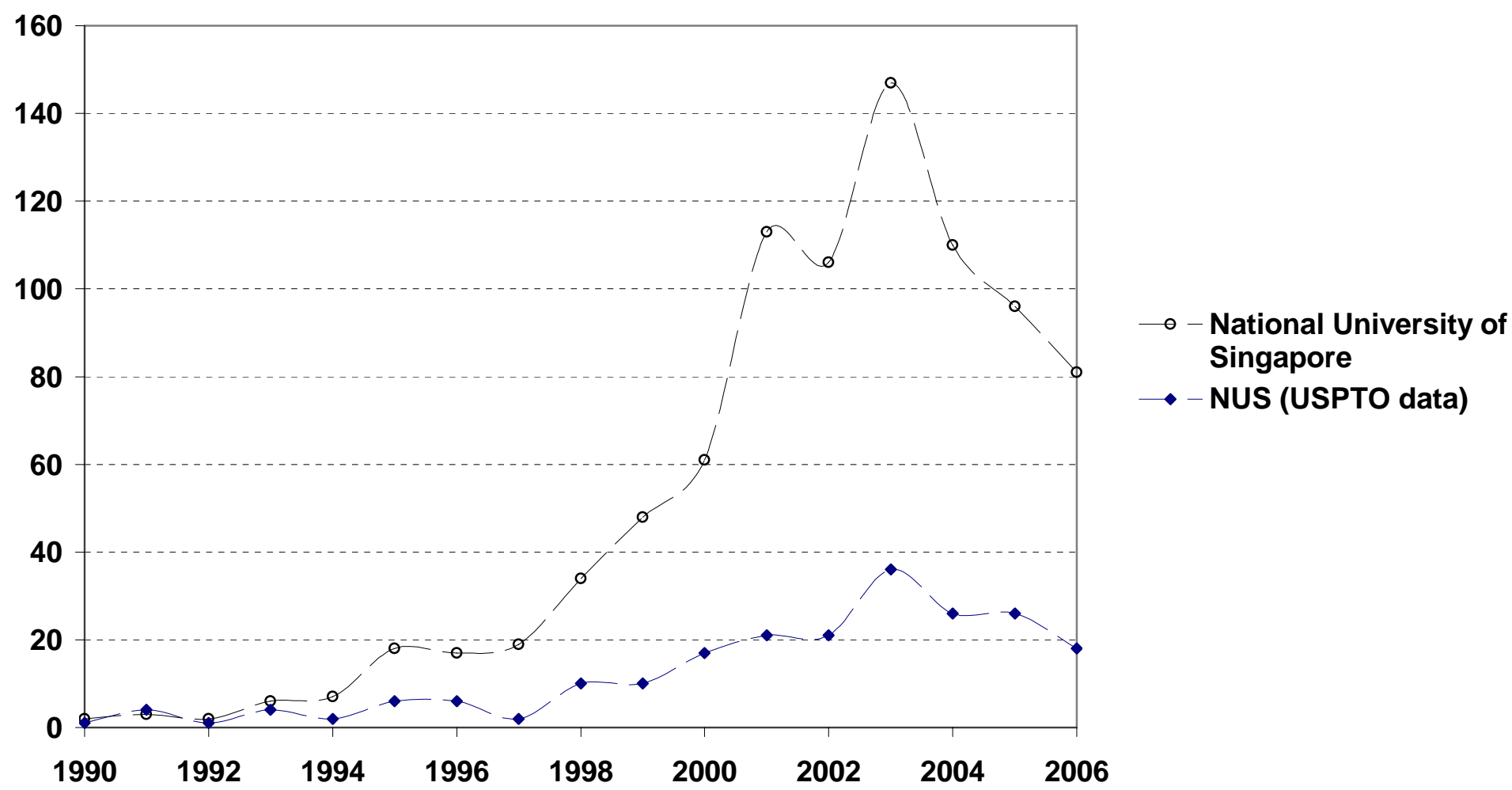
Worldwide Patents of four leading US universities (EPO database)

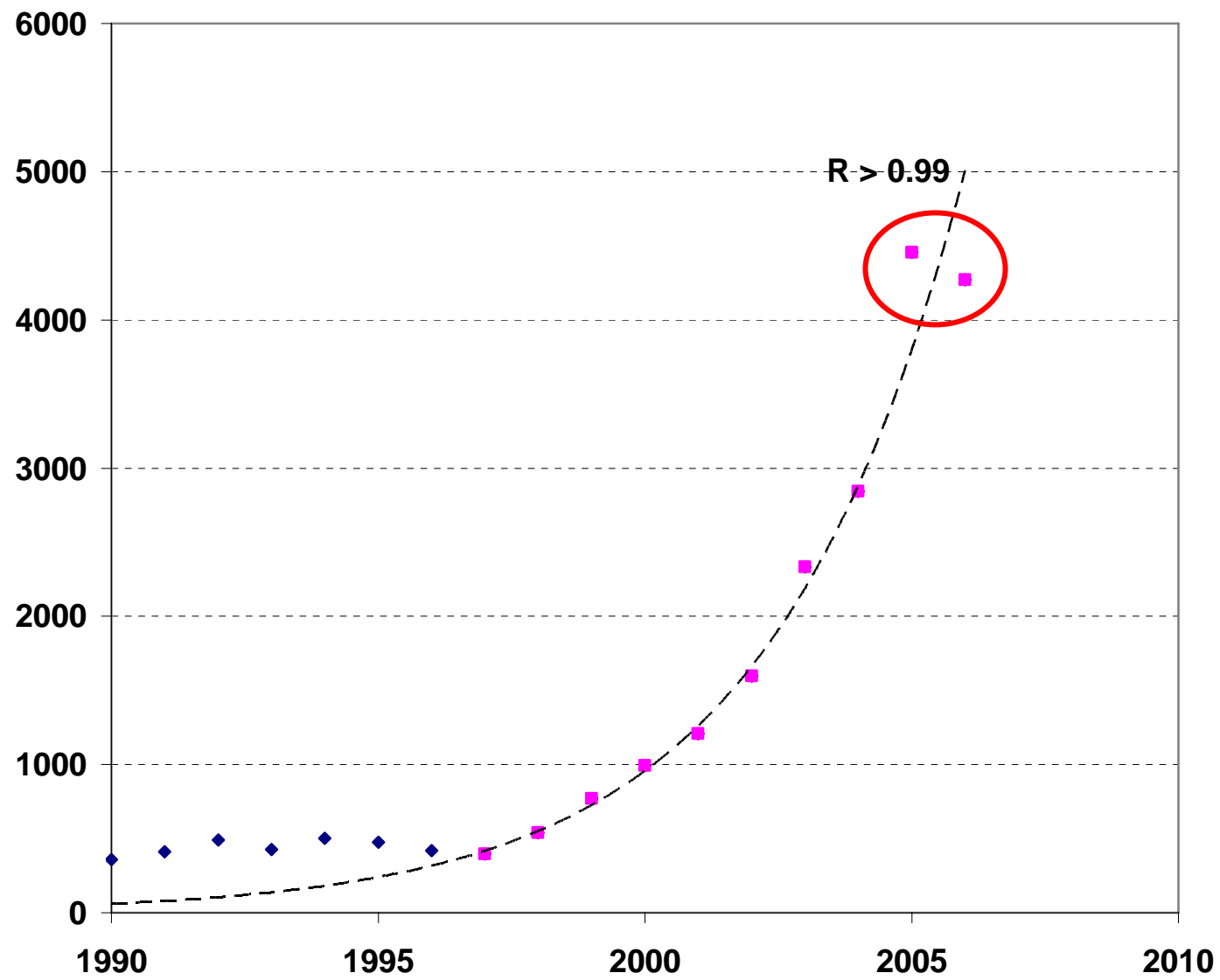


Worldwide patents of leading non-US universities (EPO-database)



Worldwide number of patents of the NUS





◆ "China OR Hongkong" as applicant address

■

Is there a *post-Bayh-Dole* Model?

- After a period of booming, university patenting is stabilizing or perhaps even declining;
- (Tokyo University is the exception;)
- Are there consequences for the **Triple Helix Thesis**?
- For the **Entrepreneurial University**?