

MAC OS X 10.7 (LION)

NUS Wireless Setup Guide

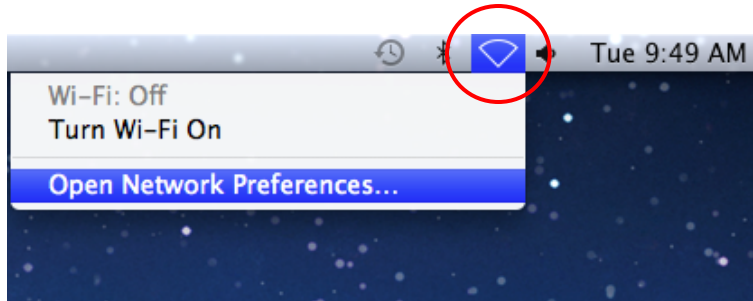


A. Introduction

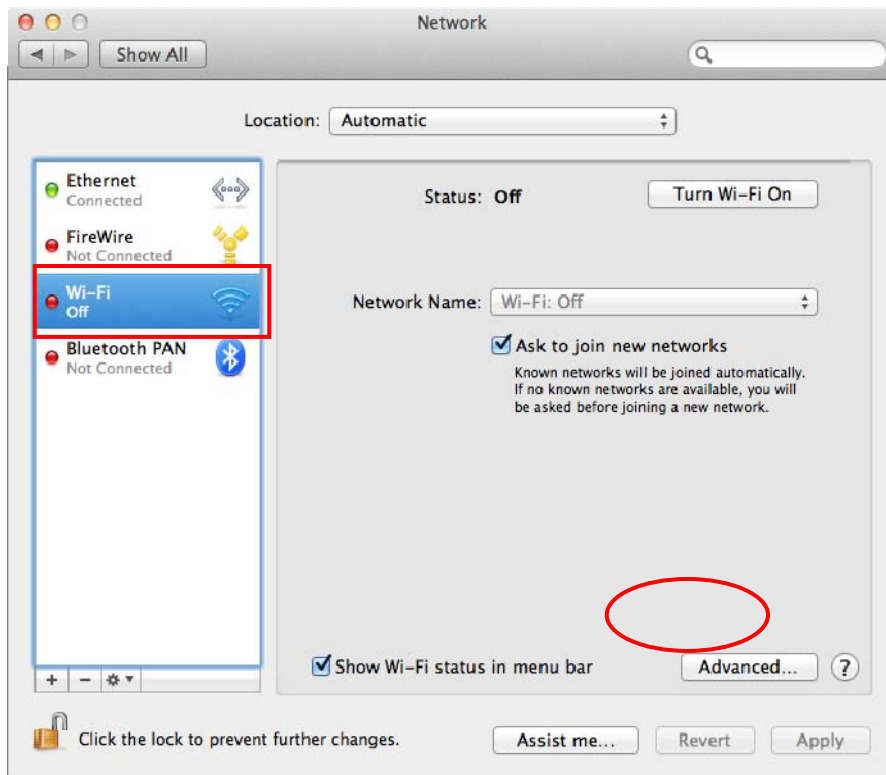
This document shows the step by step instructions on how to configure your Mac OS X 10.7 (Lion) to NUS wireless.

B. Configure NUS Wireless on Lion

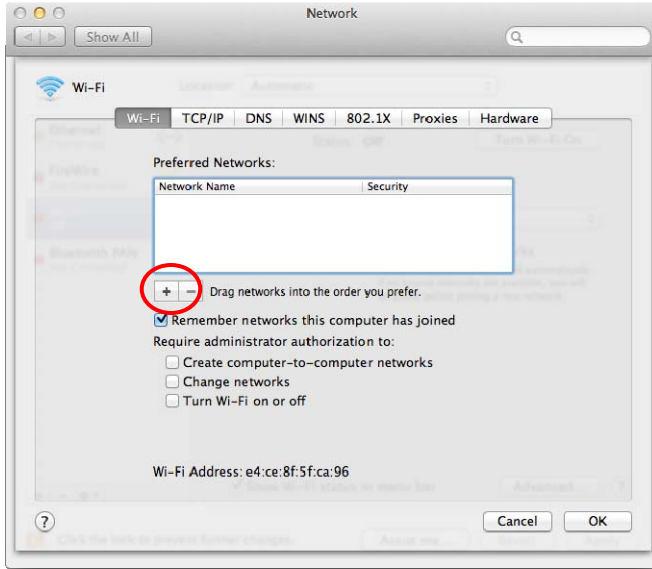
1. Click on the Wi-Fi icon on the top-right corner, and select **Open Network Preferences...**



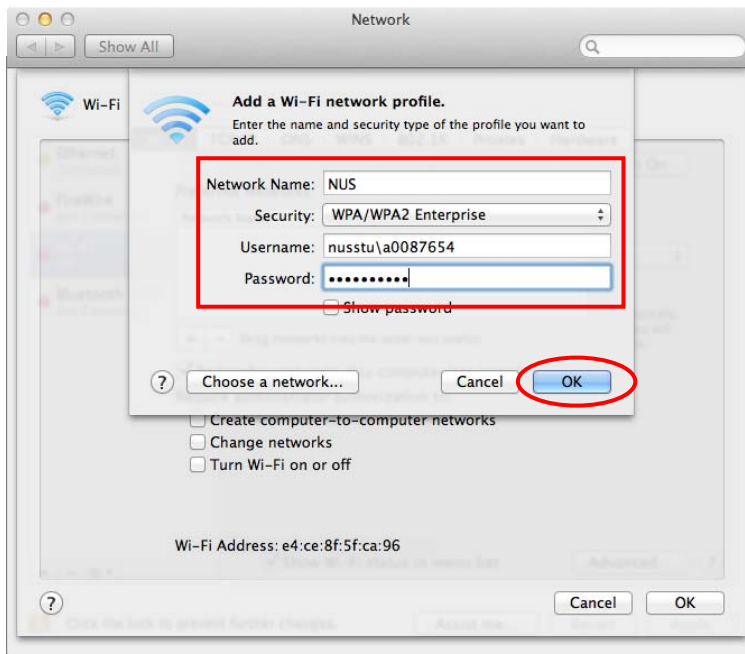
2. Select **Wi-Fi** and click **Advanced...**



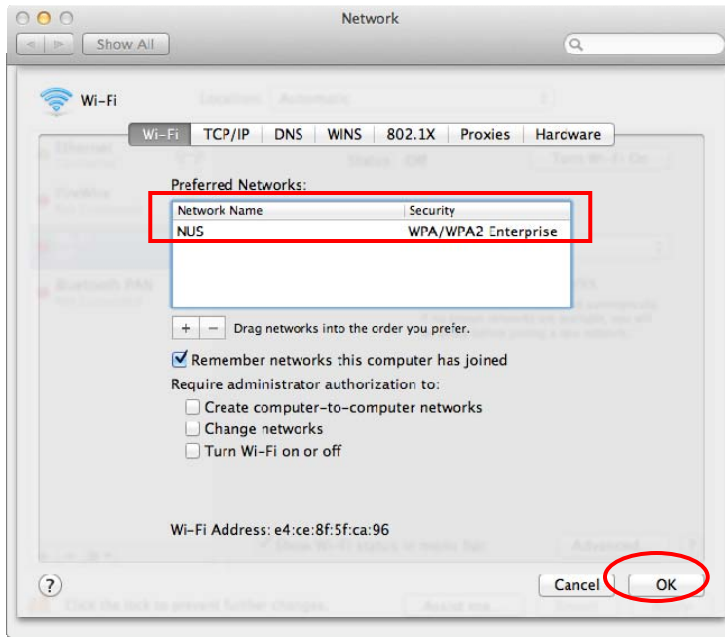
3. Click +



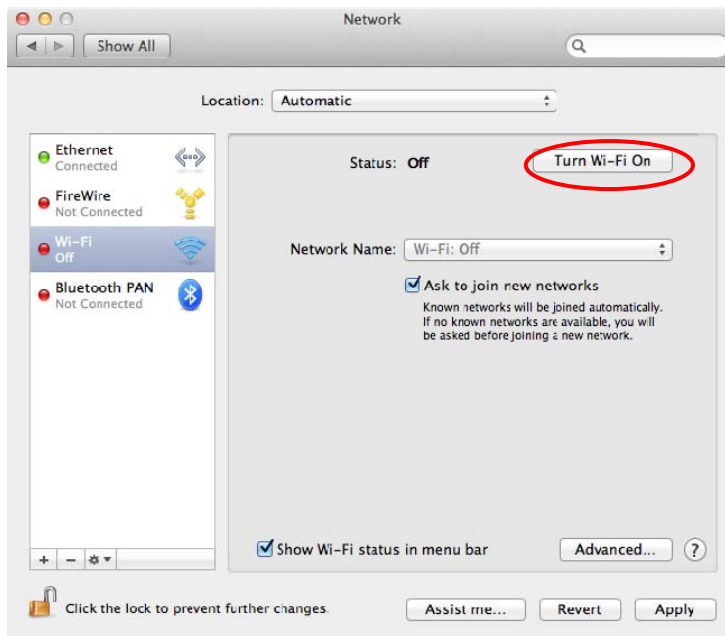
4. Enter the following:
Network Name: **NUS**
Security: **WPA / WPA2 Enterprise**
Username: enter **Domain\your NUSNET UserID**
Password: **your NUSNET password**
Click **OK**.



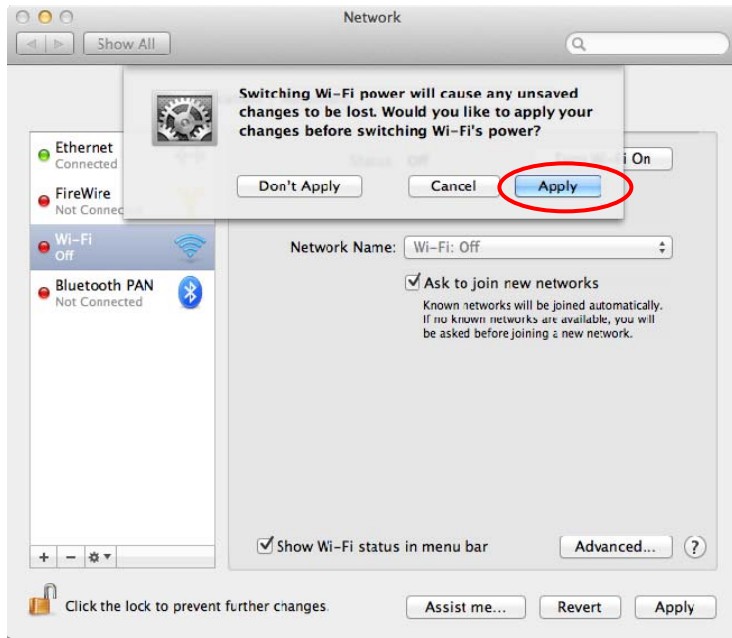
5. After the network profile is created, click **OK**.



6. Click **Turn Wi-Fi On**.



7. Click **Apply**.



8. If you are within the NUS wireless access point, it will connect you automatically to the NUS wireless now.

