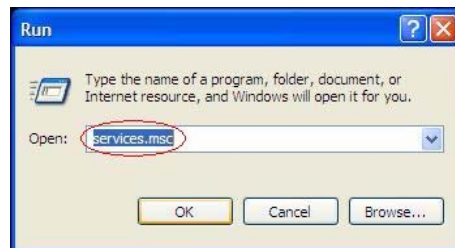


NUS Wireless Network Configuration Guide for Windows XP Service Pack 3

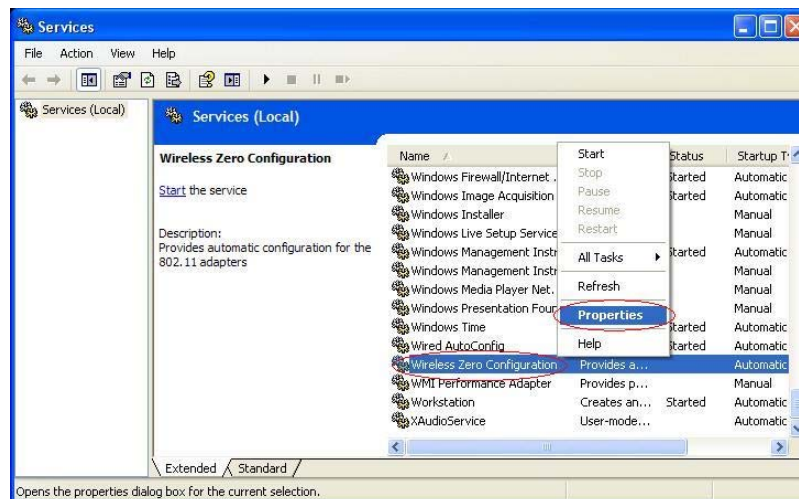
1. From Windows Start, click **Run**.



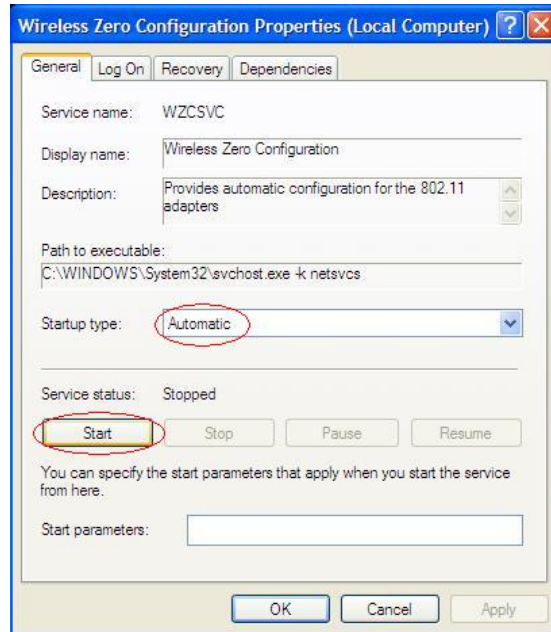
2. Enter **services.msc** and click **OK**.



3. Locate **Wireless Zero Configuration** and right-click to choose **Properties**.



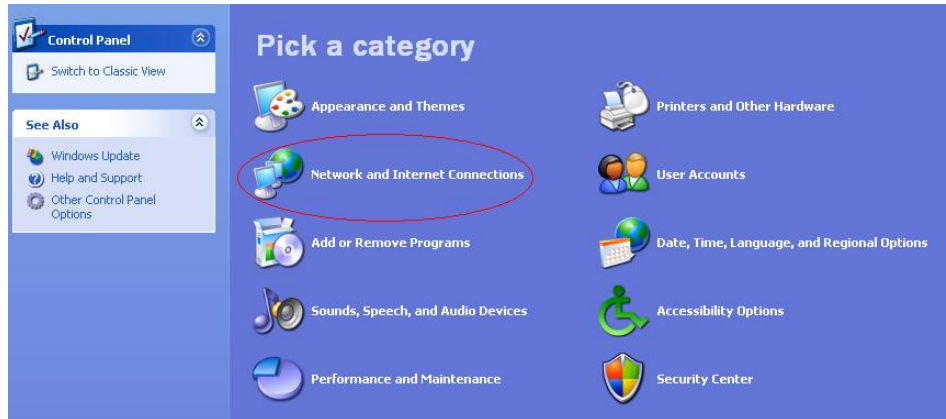
4. Change **Startup type** to **Automatic** and click **Start**. Then click **OK**.



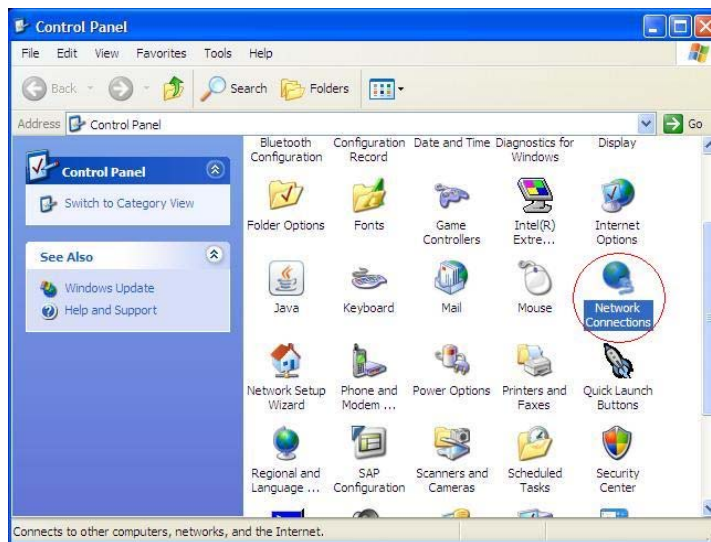
5. From Windows Start, click **Control Panel**.



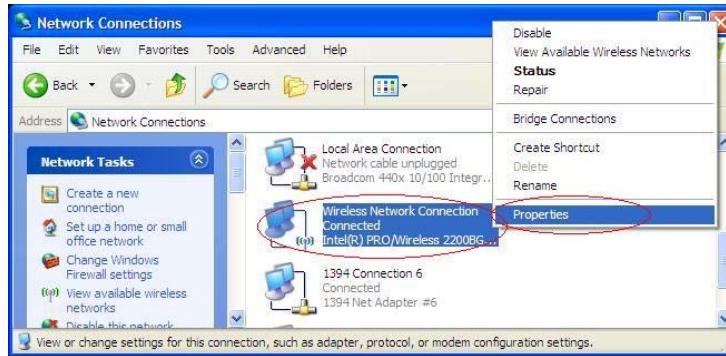
6. **Select Network and Internet Connections.**



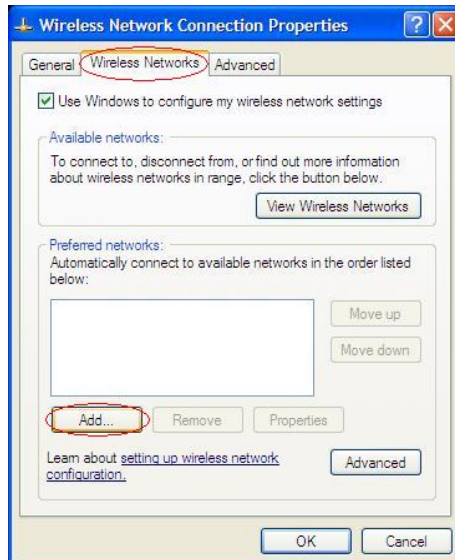
If you are using Control Panel classic view, select **Network Connections**.



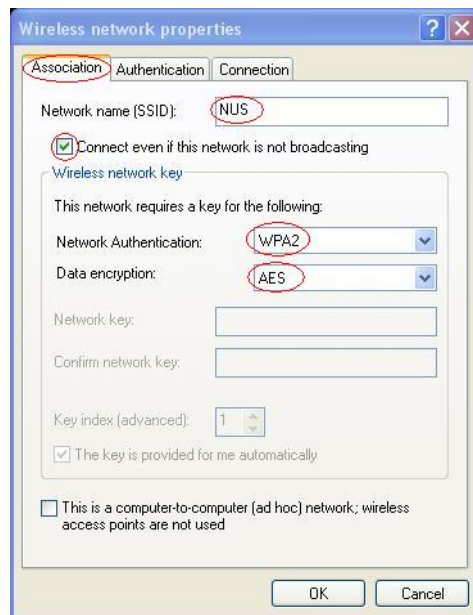
7. Right-click **Wireless Network Connection** and choose **Properties**.



8. Under **Wireless Networks** tab, click **Add...**



9. Under **Association** tab, select the following settings
- Network name (SSID): **NUS**
- Tick **Connect even if this network is not broadcasting**
- Network Authentication: **WPA2**
- Data encryption: **AES**



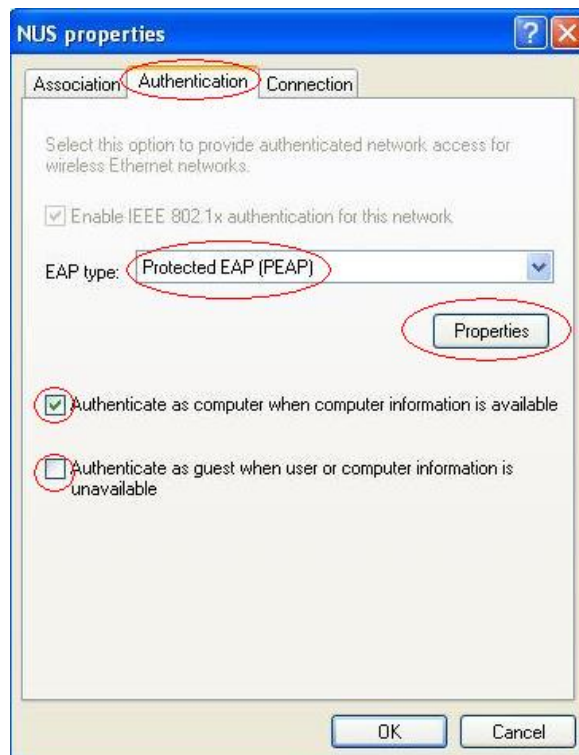
10. Under **Authentication** tab, choose the following settings:

Tick **Authentication as computer when computer information is available**.

Untick **Authenticate as guest when user or computer information is unavailable**.

EAP type: **Protected EAP (PEAP)**

Click **Properties**.



11. Select only the following settings:

Tick **Validate server certificate**

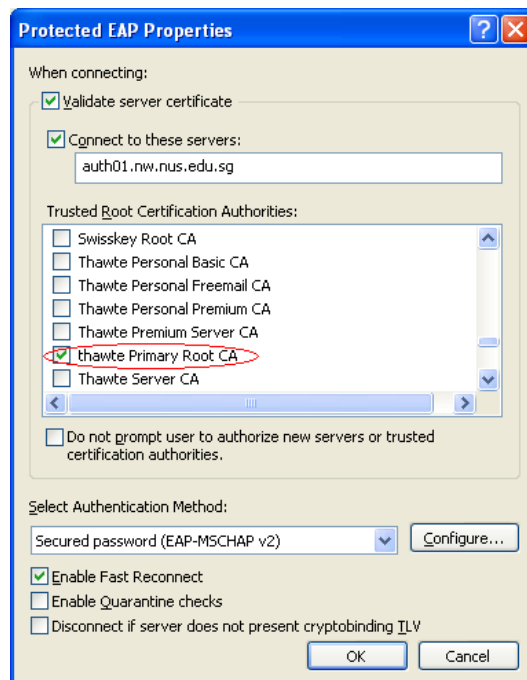
Tick **Connect to these servers** and enter **auth01.new.nus.edu.sg** at the field box.

Tick **thawte Primary Root CA**.

Tick **Enable Fast Reconnect**

Authentication Method: **Secured password (EAP-MSCHAP v2)**

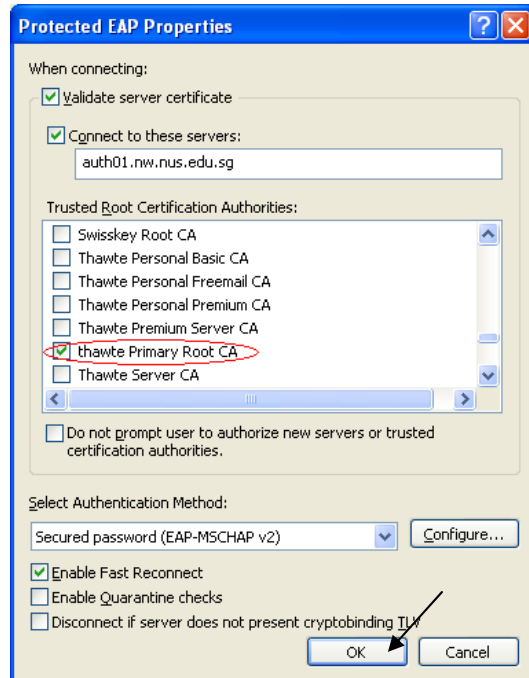
Click **Configure...**



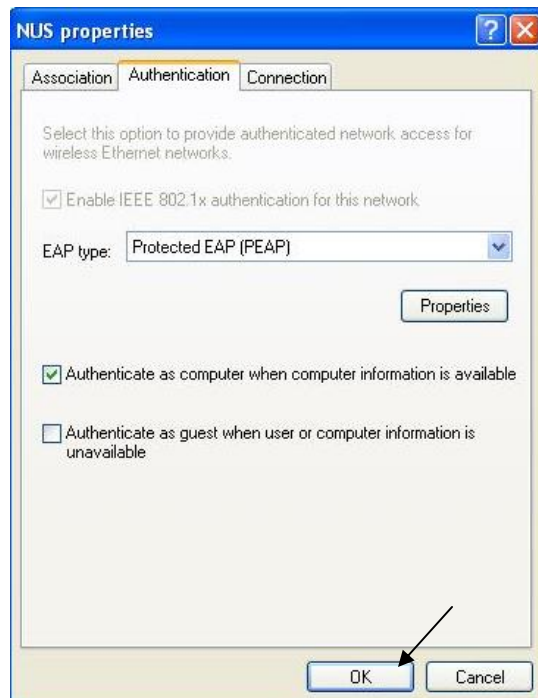
12. Untick **Automatically use my Windows logon name and password (and domain if any)**.
Click **OK**.



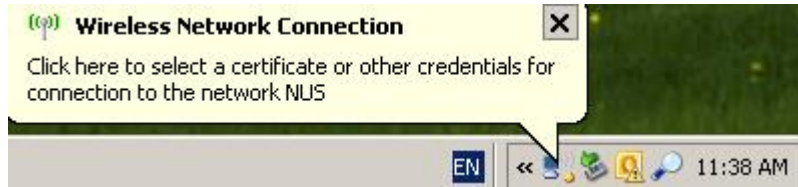
13. Click **OK**.



14. Click **OK**.



15. Click the pop-up balloon “**Wireless Network Connection**”.



16. Enter NUSNET Username and Password, and click **OK**.
- **Username** : (Enter your NUSNET Username)
 - **Password** : (Enter your NUSNET Password)
 - **Logon domain** : (E.g. of Domain: NUSSTF/NUSSTU/NUSEXT)



17. You are now connected to **NUS** wireless network. Click **Close**.

