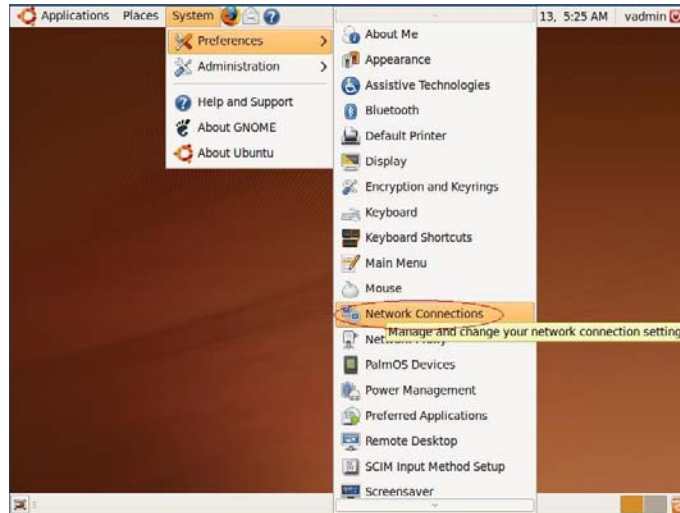


## NUS Wireless Network Configuration Guide for Ubuntu 9

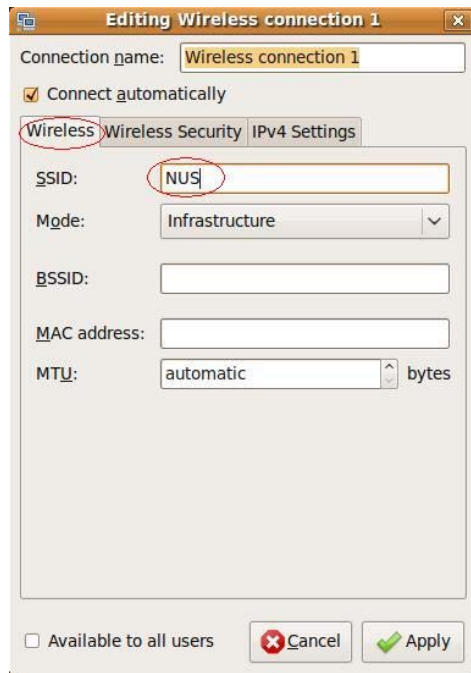
1. Select **System > Preferences > Network Connections**.



2. Click on **Wireless** tab and select **Add**.



3. Click on **Wireless** tab and then type SSID: **NUS**



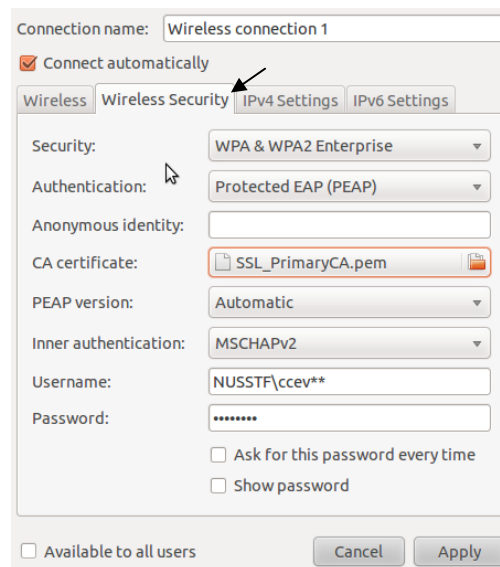
4. Click on **Wireless Security** tab and fill in the following fields:

- **Security** : WPA & WPA2 Enterprise
- **Authentication** : Protected EAP (PEAP)
- **Anonymous Identity** : Leave blank
- **CA certificate** : SSL\_PrimaryCA.pem
- **PEAP version** : Automatic
- **Inner authentication** : MSCHAPv2
- **Username** : (Enter your “Domain\NUSNET Username”)  
(E.g. of Domain: NUSSTF/NUSSTU/NUSEXT)
- **Password** : (Enter your NUSNET Password)

Then click **Apply**

*\*Note: If your operating system is equipped with existing Thawte root CA, it is recommended that you use the Thawte root CA in your operating system, and do not need to download this SSL\_PrimaryCA.pem.*

SSL\_PrimaryCA.pem can be downloaded at the Wireless Guides under the following URL: <http://www.nus.edu.sg/comcen/gethelp/eguides.html>



5. A pop-up **“Connection Established with NUS SSID”** will be shown on the top right hand side of the screen.

