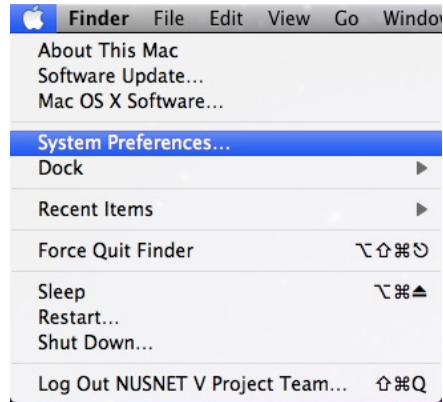


NUS Wireless Network Configuration Guide for Mac OS X 10.6

1. From Mac OS menu, choose **System Preferences**.



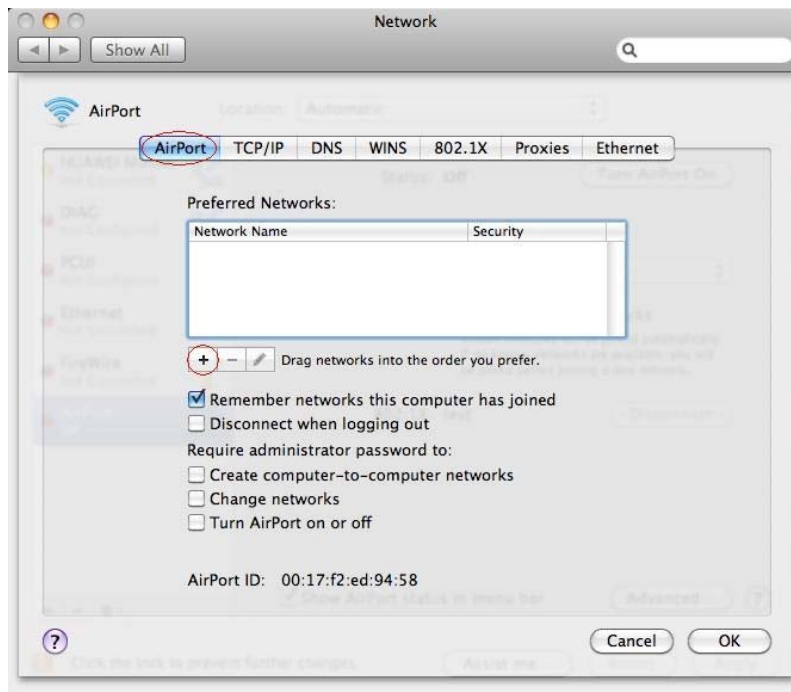
2. Click **Network**.



3. Choose **AirPort** and click **Advanced...**



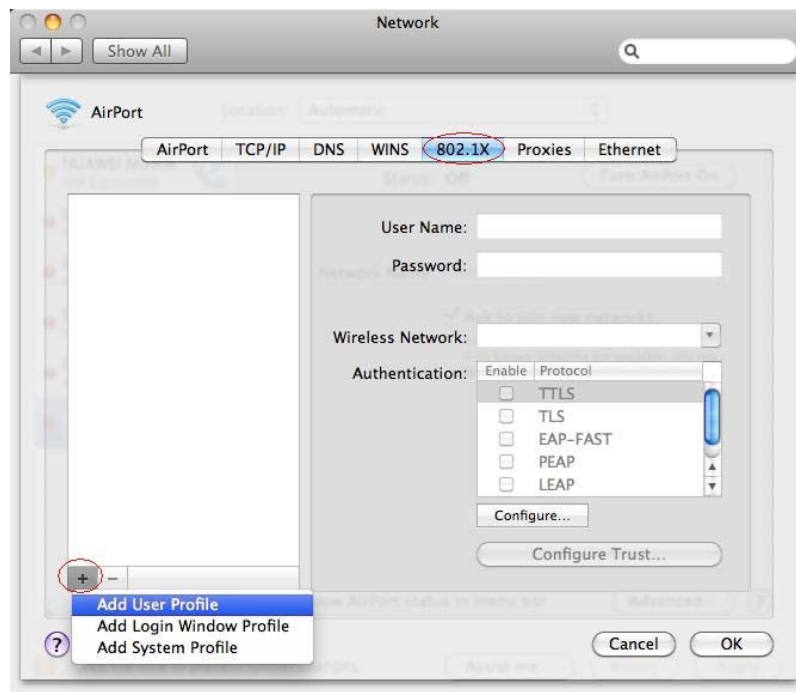
4. Click the **AirPort** tab. Then click **+**



5. Enter **NUS** for Network Name. Choose **WPA2 Enterprise** for Security. Then click **Save**.



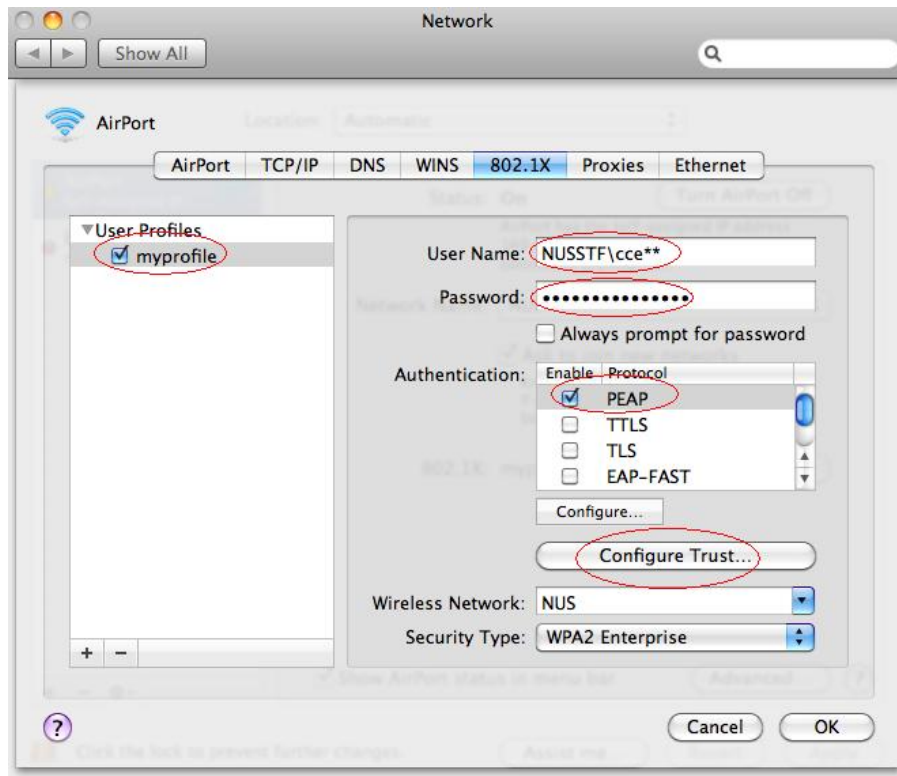
6. Click the **802.1X** tab and click **+**. Then choose **Add User Profile**.



7. Provide a name for your profile and enter the following settings:

- **Username** : (Enter your “Domain\NUSNET Username”) (E.g. of Domain: NUSSTF/NUSSTU/NUSEXT)
- **Password** : (Enter your NUSNET Password)
- **Authentication** : PEAP
- **Wireless Network** : NUS

Click **Configure Trust...**



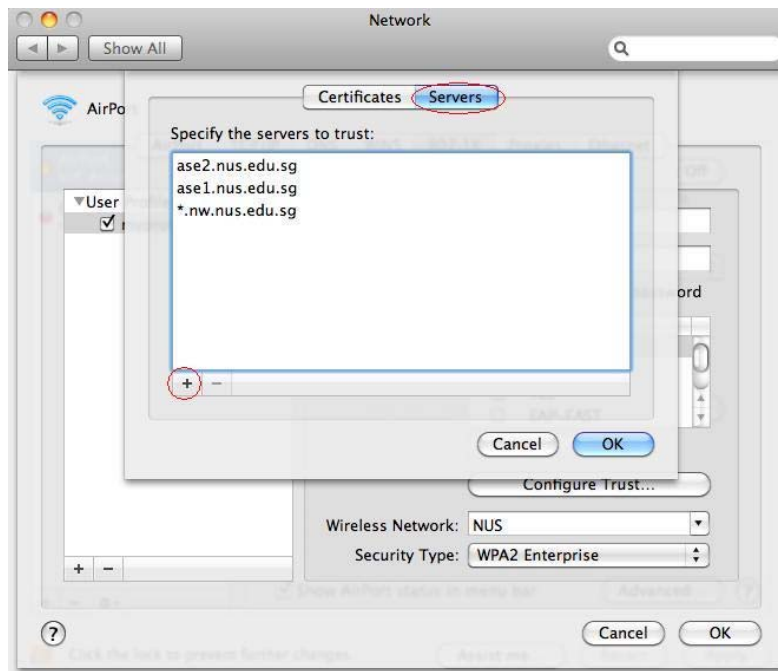
8. From the **Servers** tab, click on “+” and enter the following 3 servers:

***.nw.nus.edu.sg**

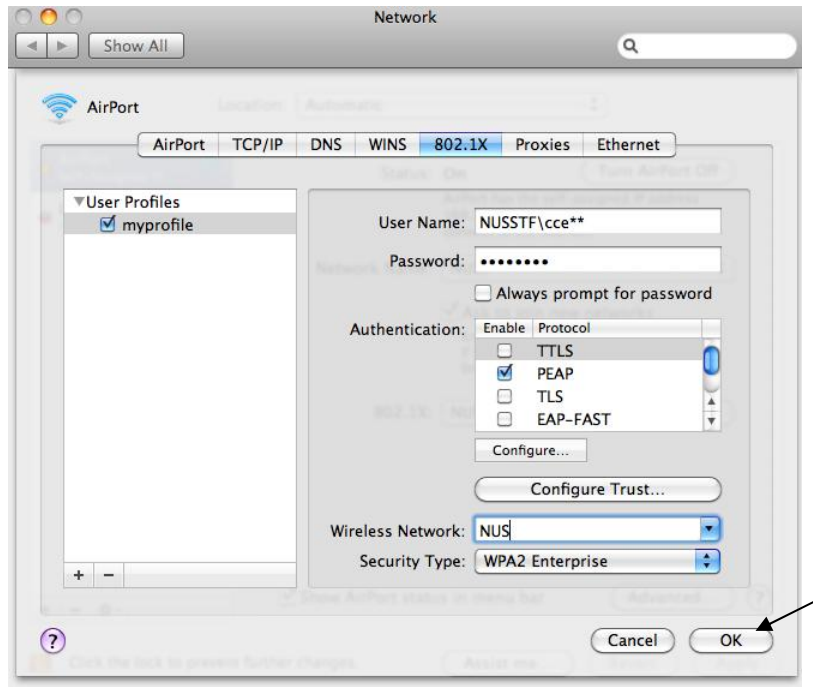
ase1.nus.edu.sg

ase2.nus.edu.sg

Click **OK**.



9. Click **OK**.



10. Click **Apply** and click **Turn AirPort On** to switch on your wireless.



11. Click **Connect** to connect your wireless profile with 802.1x authentication.



12. Under **Status**, “**Airport is connected to NUS**” will be shown and you are now connected to NUS wireless network.

