

NUS VPN Configuration Guide for iPad

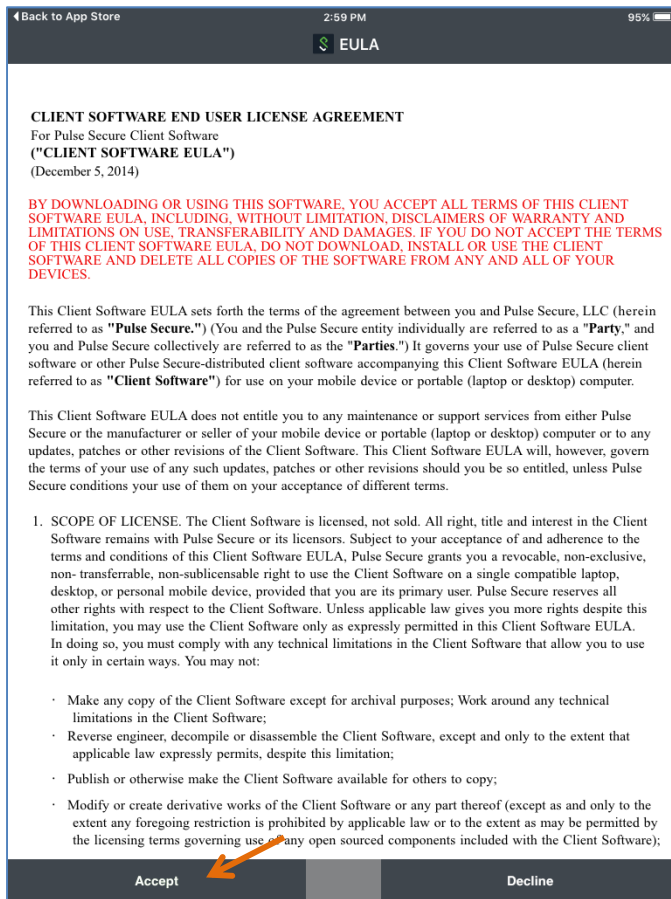
A. Installing the Pulse Secure app

Download Pulse Secure from Apple App Store.

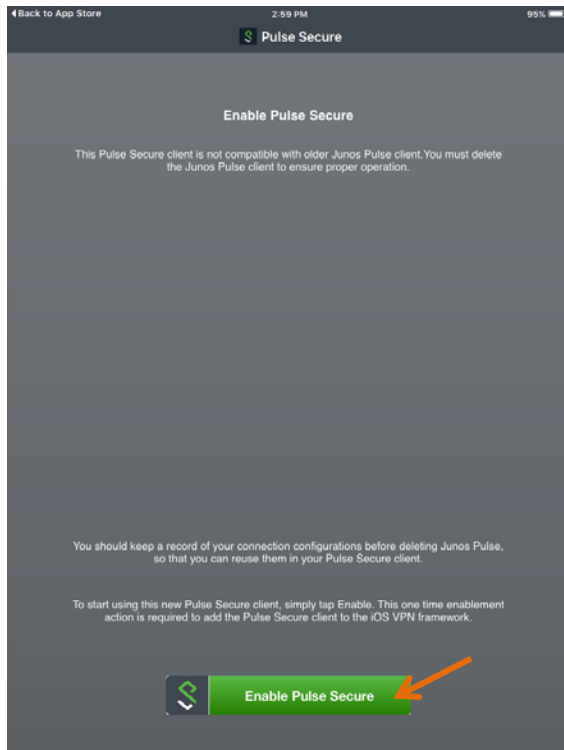


B. Adding NUS VPN profile

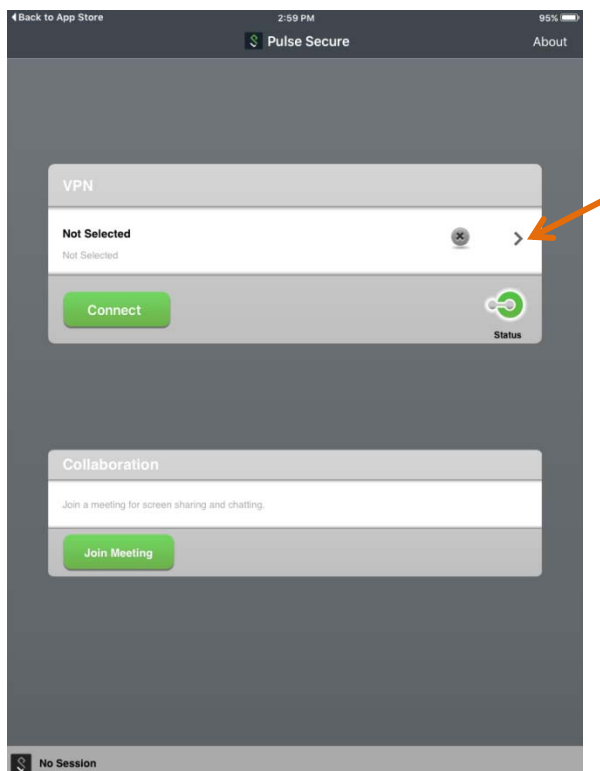
1. Open the Pulse Secure app and **Accept** the license agreement.



2. Tap **Enable Pulse Secure**. If you have previously installed Junos Pulse app on your iPad, delete it to ensure proper operation.



3. Tap the right arrow (>) icon.



4. Enter the following.

Name: your preferred name

URL: <https://webvpn.nus.edu.sg>

(Optional) Username: your NUSNET User ID

(Optional) Realm: your NUS domain*

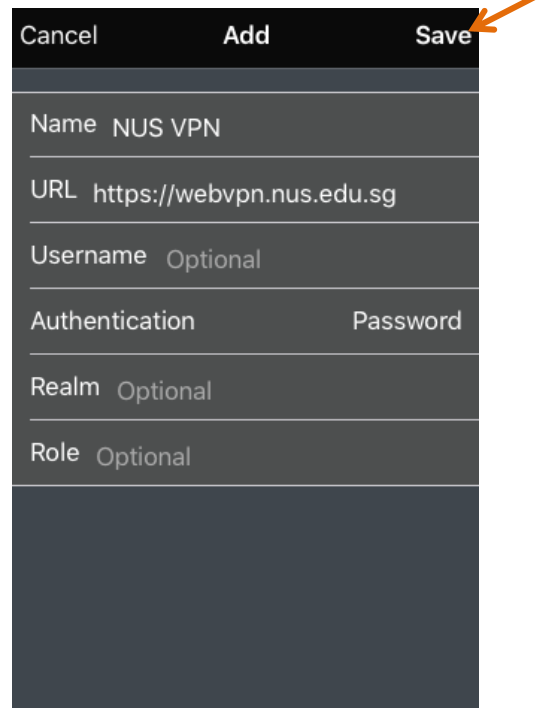
*NUS Domain refers to:

NUSSTF for staff

NUSSTU for students

NUSEXT for visitors

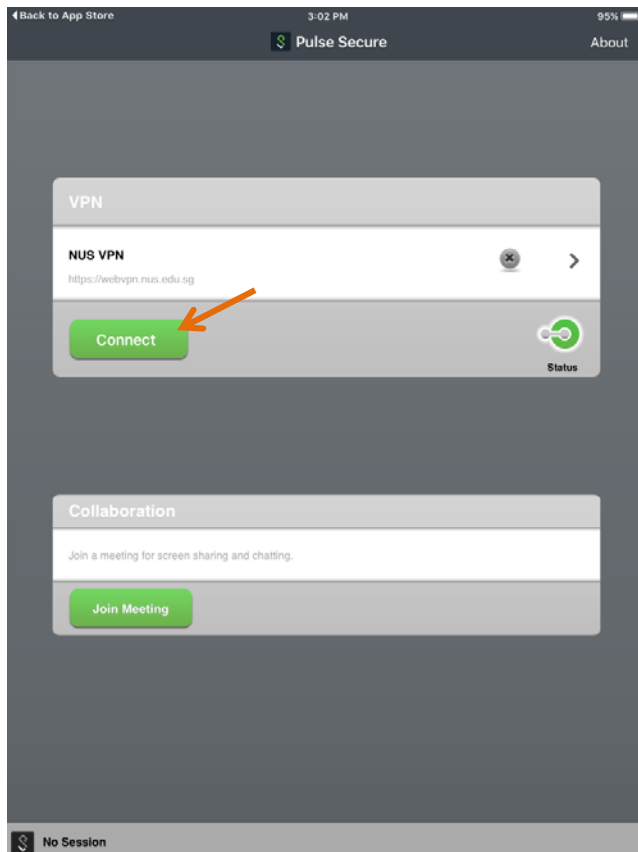
Tap **Save**.



A screenshot of the Pulse Secure mobile application's 'Add' screen. The screen has a dark header with 'Cancel', 'Add', and 'Save' buttons. An orange arrow points to the 'Save' button. Below the header, there are several input fields: 'Name' (filled with 'NUS VPN'), 'URL' (filled with 'https://webvpn.nus.edu.sg'), 'Username' (with 'Optional' as a placeholder), 'Authentication' (with 'Password' as a placeholder), 'Realm' (with 'Optional' as a placeholder), and 'Role' (with 'Optional' as a placeholder).

C. Connecting to NUS VPN

1. After the VPN profile has been added, click **Connect**.



2. Enter your NUSNET User ID, NUSNET password and select your NUS Domain*. Tap **Sign In**.

*NUS Domain refers to: **NUSSTF** for staff; **NUSSTU** for students; **NUSEXT** for visitors

webvpn.nus.edu.sg Cancel

JUNIPER
NETWORKS

Welcome to the
Instant Virtual Extranet

username

password

Realm

Sign In

Please sign in to begin your secure session.

For staff (NUSSTF), there is an additional prompt for the 2FA security code from your VIP Access application. Enter the 6-digit security code for “Additional password” and tap **Sign In**.

JUNIPER
NETWORKS

Welcome to the
Instant Virtual Extranet

Additional password

Sign In

3. The NUS VPN is now connected. You can tap **Disconnect** to end the VPN session.

You can also tap the **Status** icon to check the connection status.

