



# **NUSNET Domain Connection Setup Guide (Windows 7)**

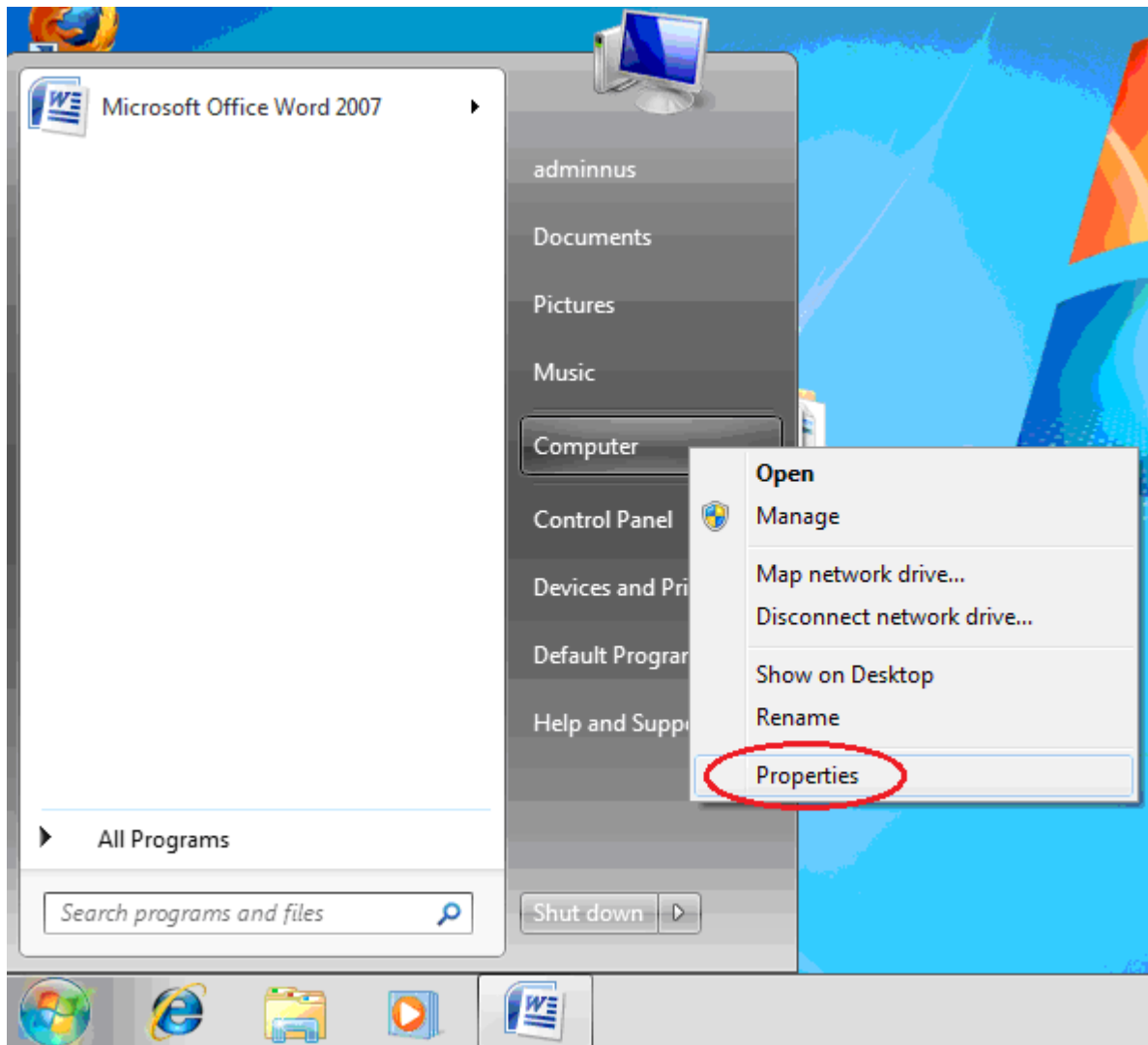
---

## A. Introduction

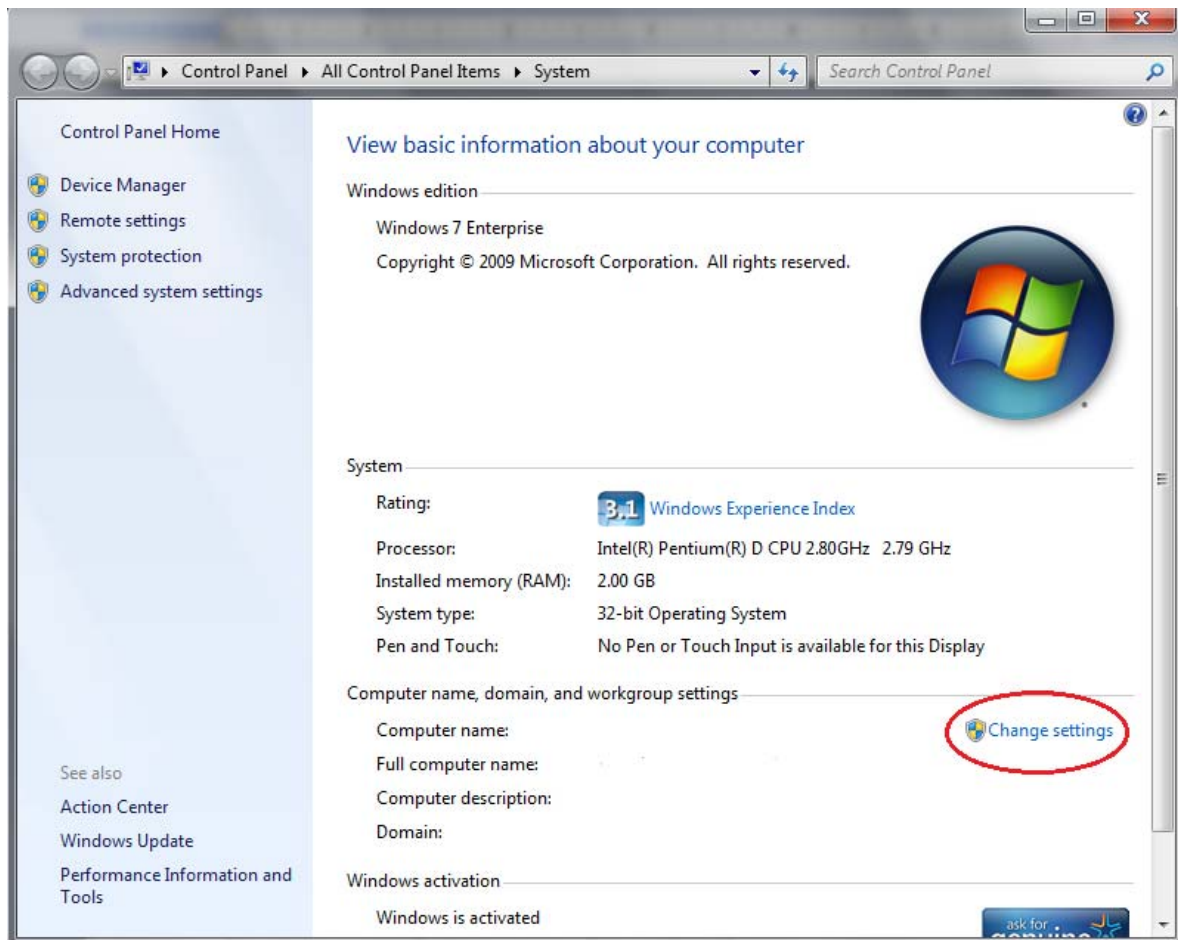
This document shows the step by step instructions on how to join Windows 7 to the NUS domain. Only Windows 7 Professional, Ultimate and Enterprise editions have this feature.

## B. Changing Computer Name

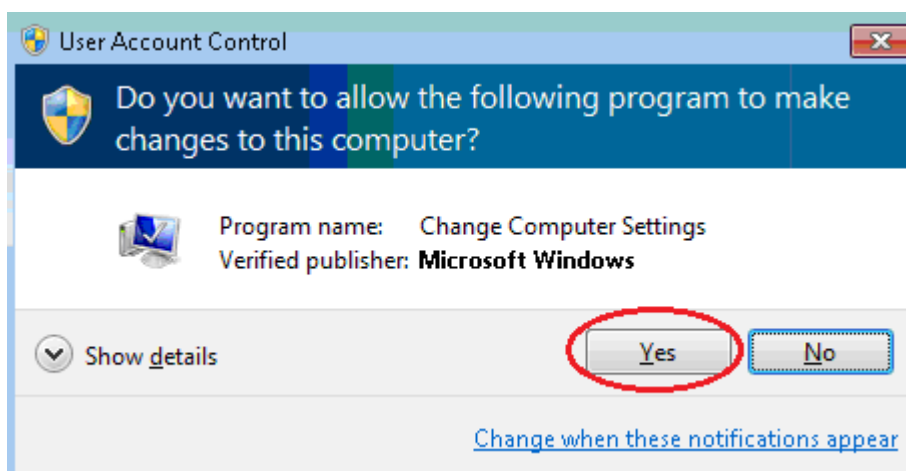
1: Click on Start → Right-click **Computer** → and select **Properties**



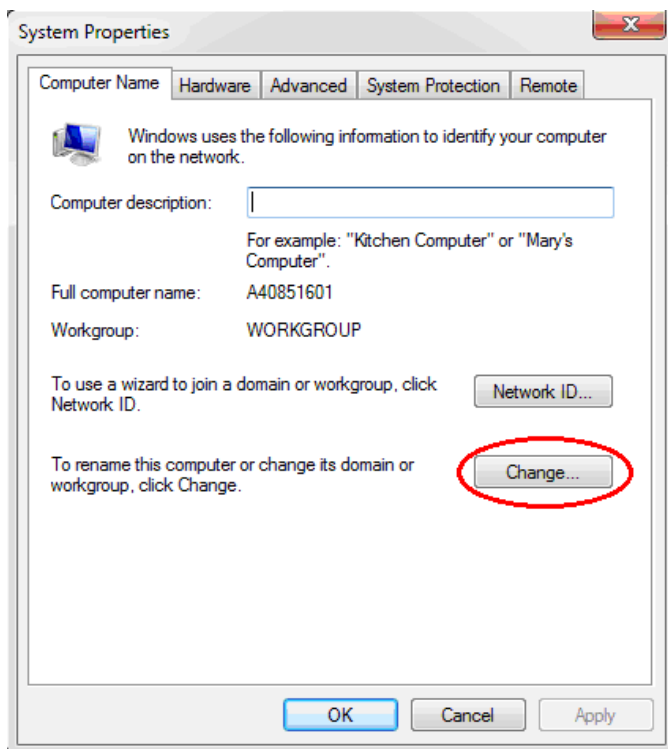
## 2: Click on **Change Settings**



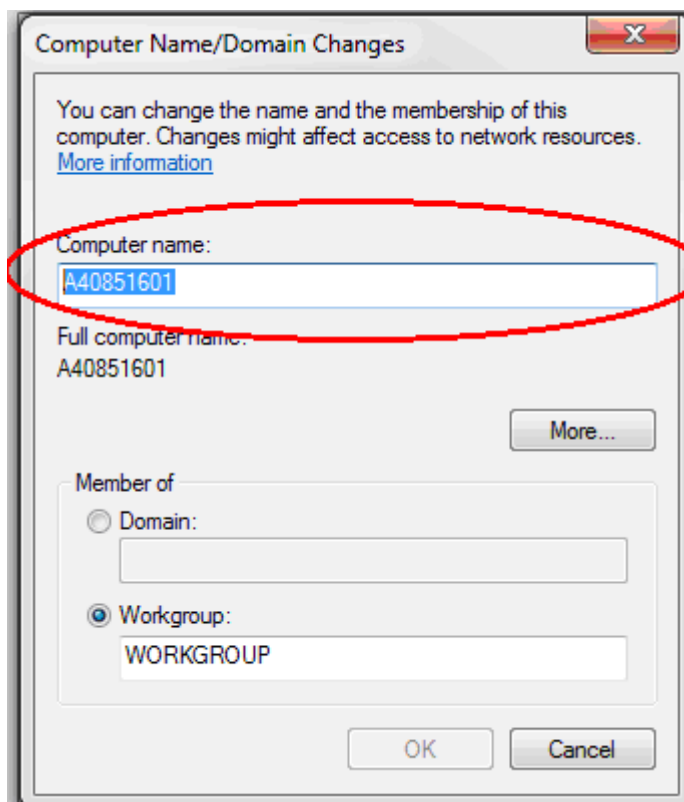
## 3: Click on **Yes** to continue.



**4: Click on Change...**



**5: Change the Computer Name to your User ID → Example: U0812345, A0081232, ccetanl**

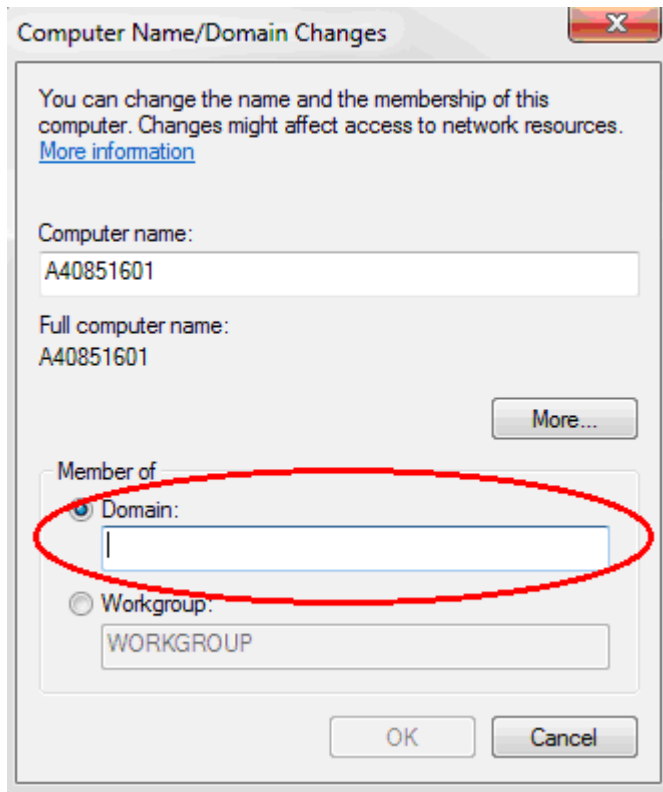


**6: Click OK and restart your computer as prompted.**

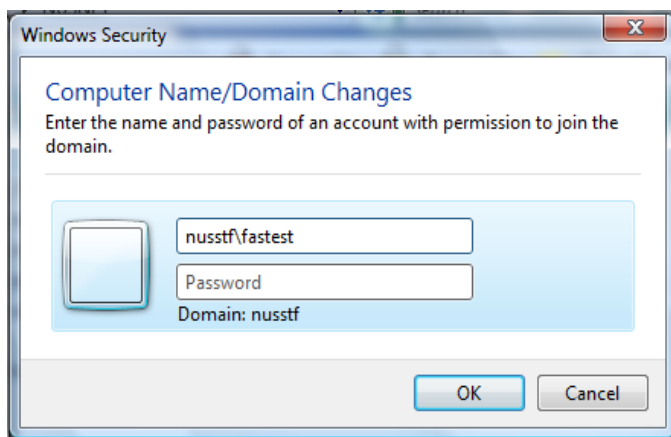
### C. Joining to NUS domain

7: Repeat from Step 1 to Step 4 (Start → right-click **Computer** → **Properties** → click **Change Settings** → click on **Yes** → **Change...**)

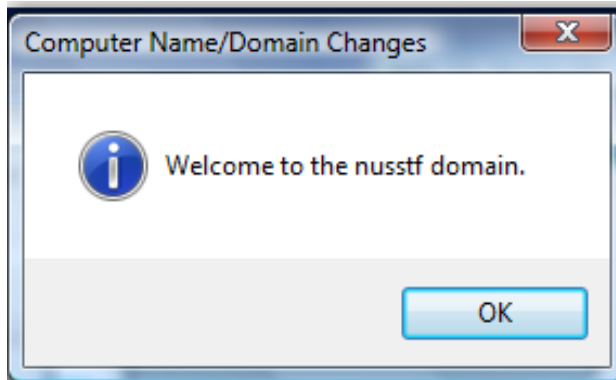
8: Select **Domain** → Enter **NUSSTF** for staff or **NUSSTU** for student → click **OK**.



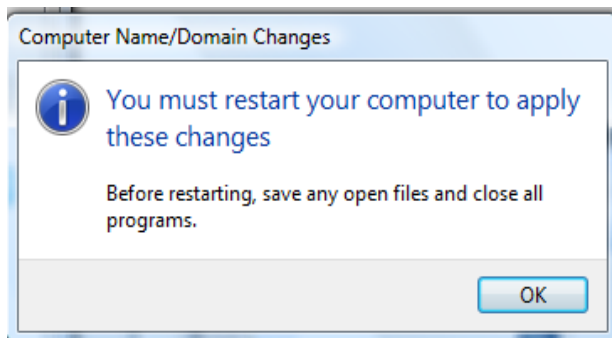
9: Next, enter your **NUS User ID** (for example, nusstu\U0812345, nusstu\A0081232, nusstf\ccetanl) and **email password** → click **OK**



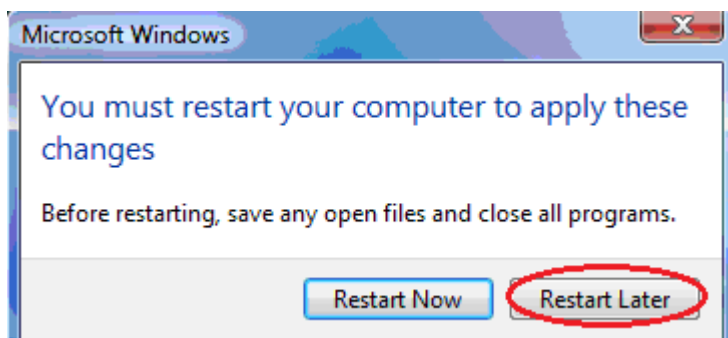
**10:** If the process is successful, you will be prompted the following. Click **OK** to continue.



**11:** Click **OK** again.

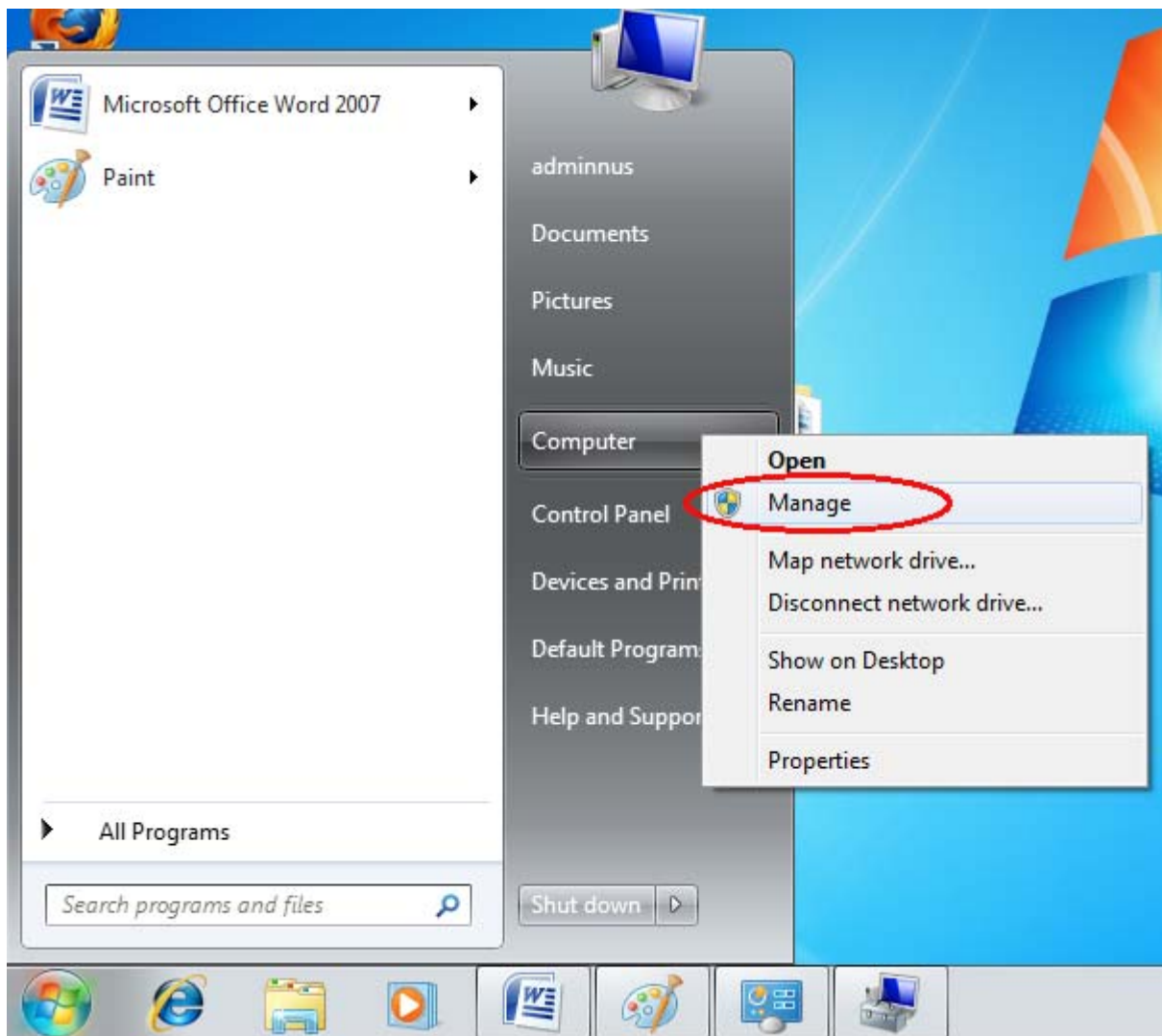


**12:** Choose **Restart Later**.

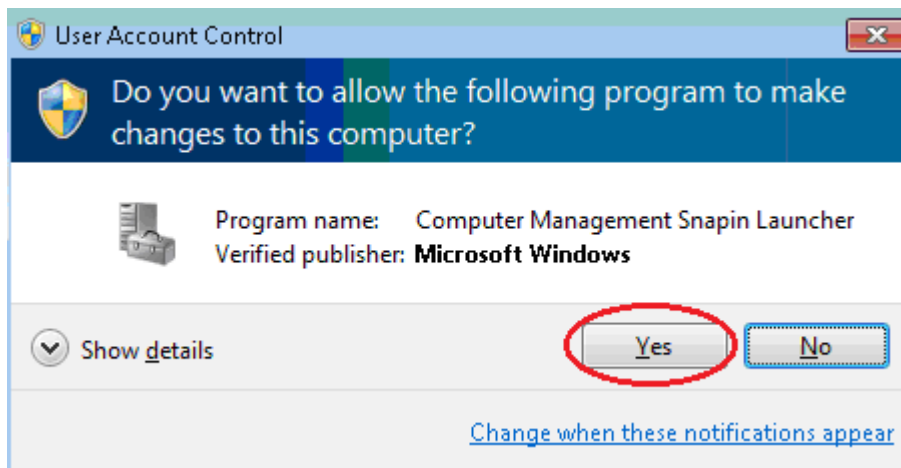


## D. Adding NUS User ID as administrator

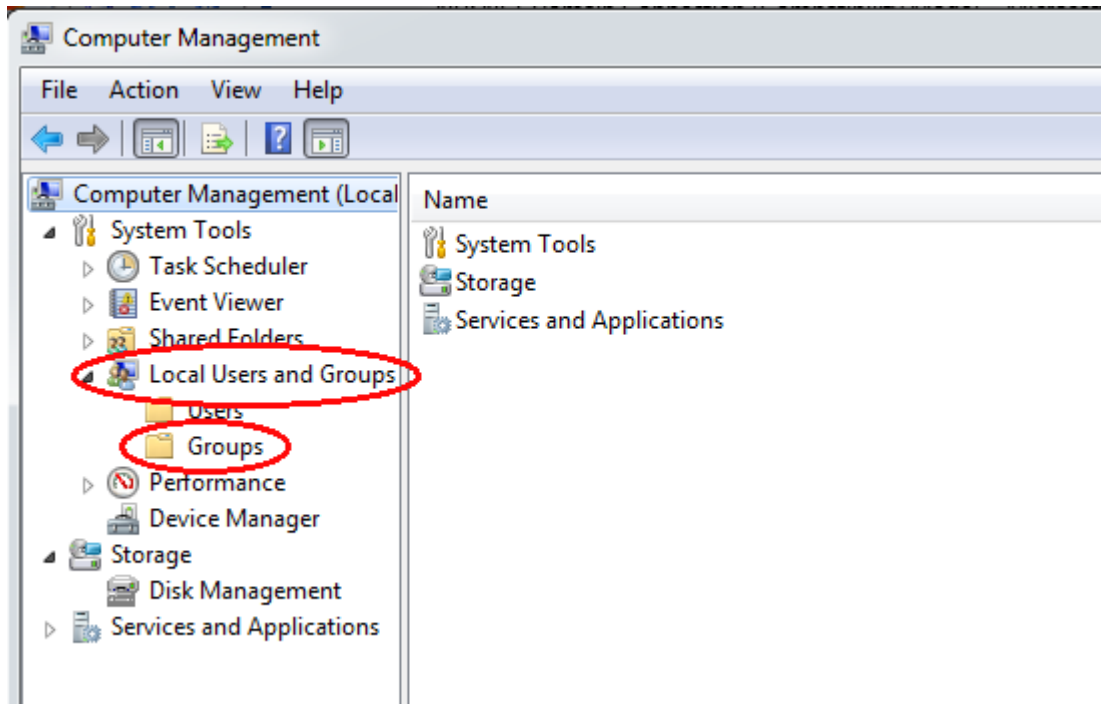
13: Start → Right-click **Computer** → **Manage**



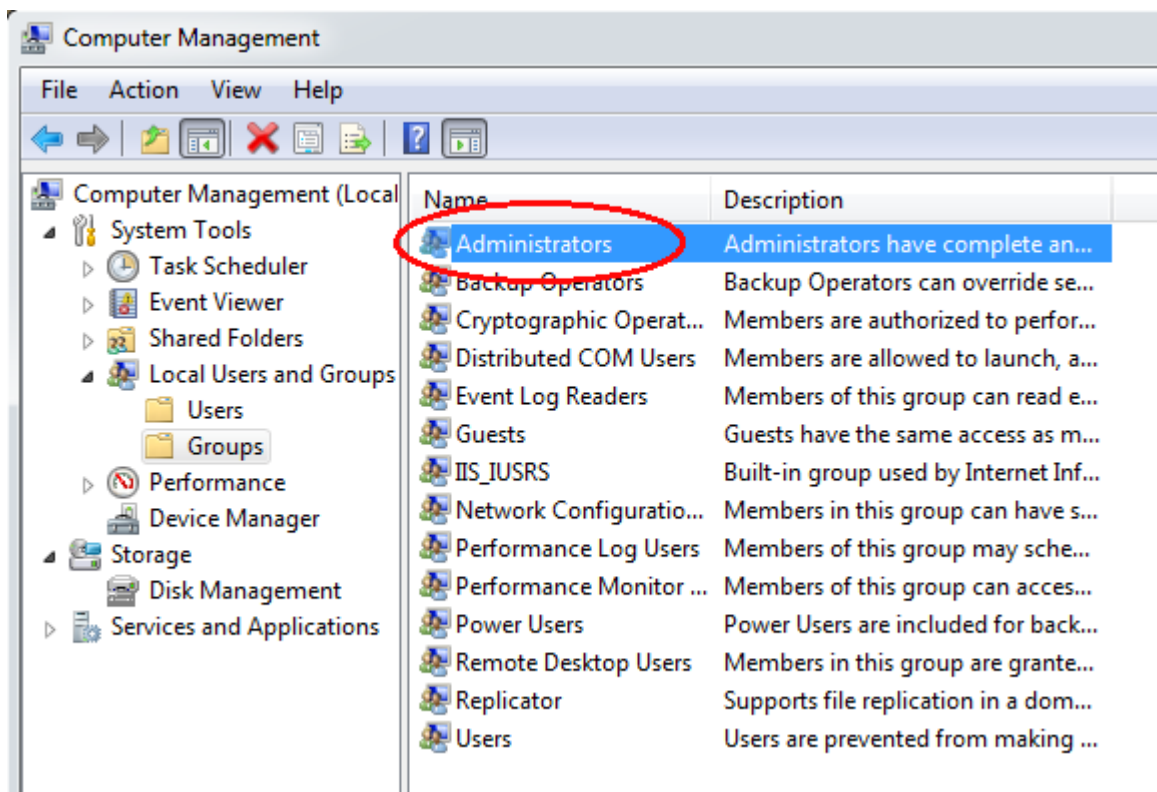
14: Click on **Yes** to continue.



15: Under Computer Management, double-click on the **Local Users and Groups** → next, select **Groups**.

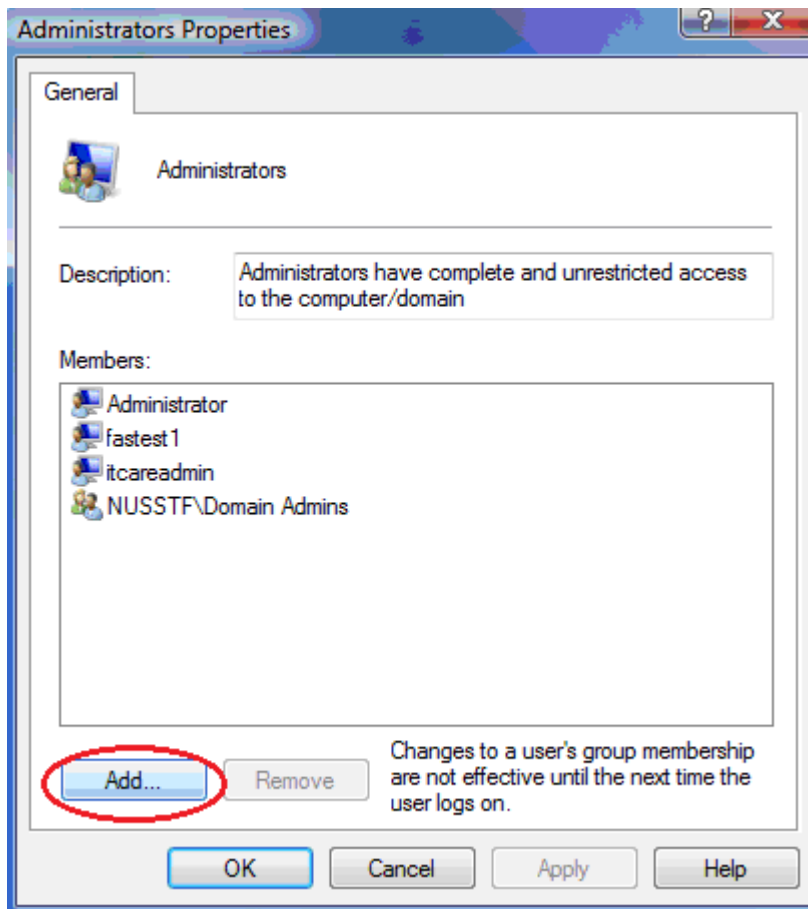


16: Look on the right and double-click on **Administrators**.

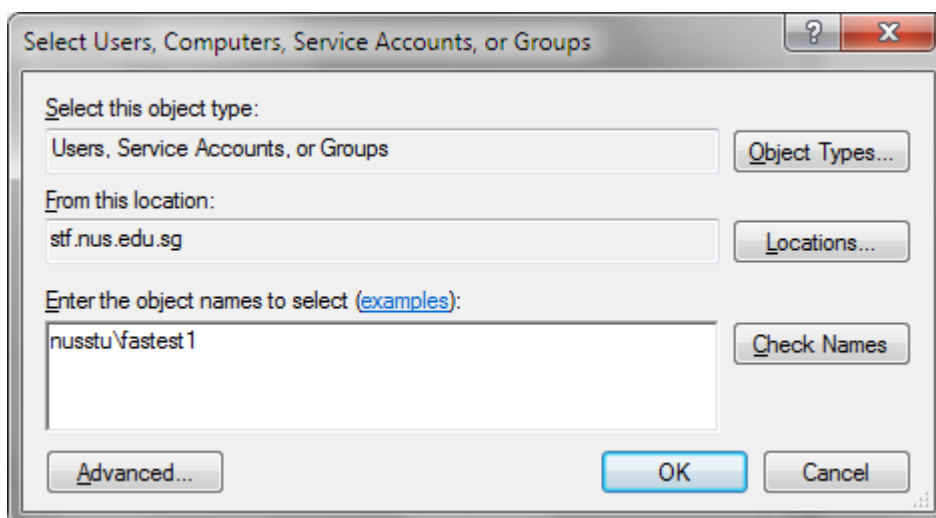




17: Click on the **Add** button.



18: Under the box for *Enter the object names to select*, enter your NUS User ID, for example: nusstf\fastest1, nusstf\ccetanl or nusstu\U0812345, nusstu\A0081232 → click **OK**.



**19:** Enter your **NUS User ID** and **password** when prompted. Click **OK**.



**20:** Restart your computer and you could now login with your NUS username to NUS domain.

For example, enter nusstf\ccetanl, nusstu\U0812345 or nusstu\A0081232, followed by your email password.

