



NUSNET Domain Connection Setup Guide (Windows 8)



A. Introduction

This document shows the step by step instructions on how to join Windows 8 to the NUS domain and to add the NUSNET account as an administrator of the computer.

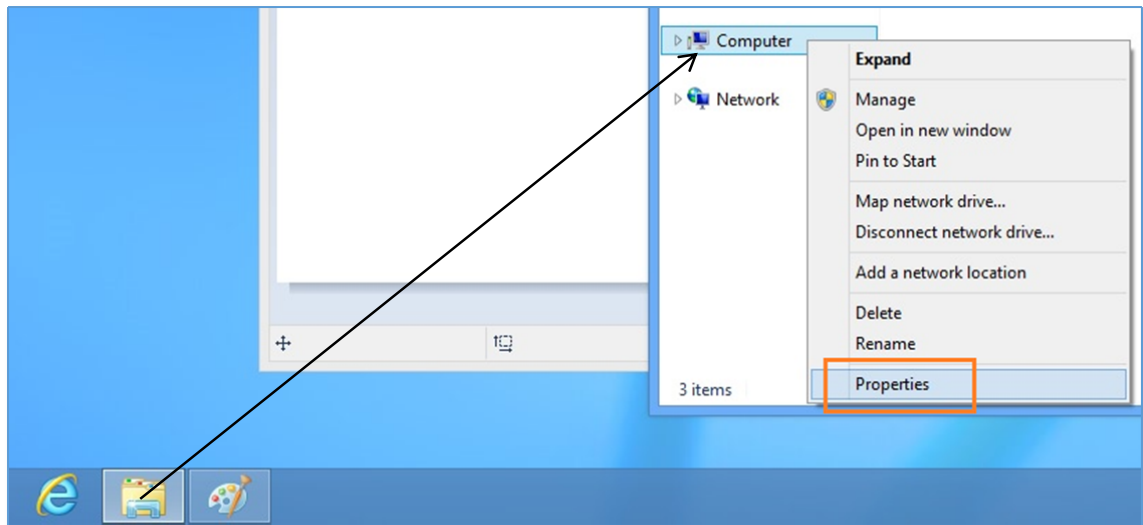
Only Windows 8 Professional and Enterprise editions have this feature.

B. Changing Computer Name

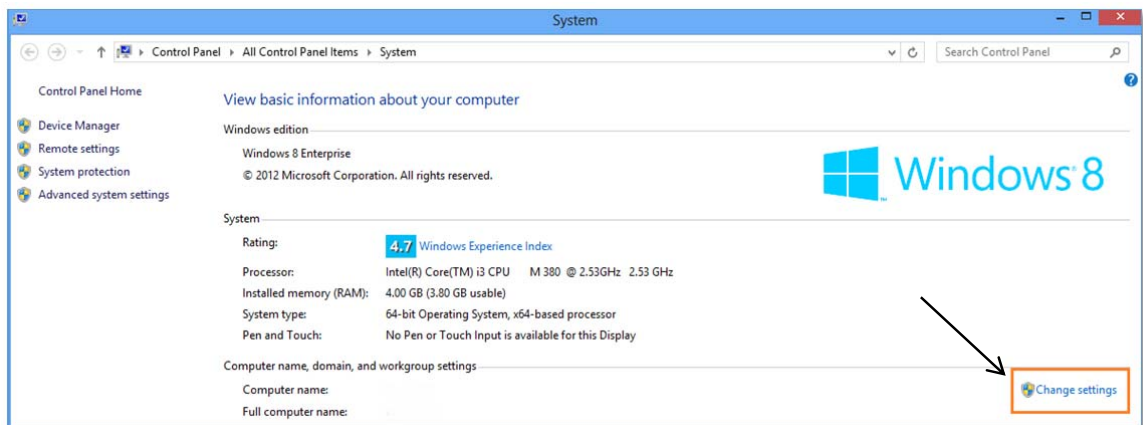
You need to use a unique computer name to join to NUS domain.

1. Login to your computer with the local administrator account first.
2. From Windows 8 Desktop, click on **File Explorer** from the bottom bar.

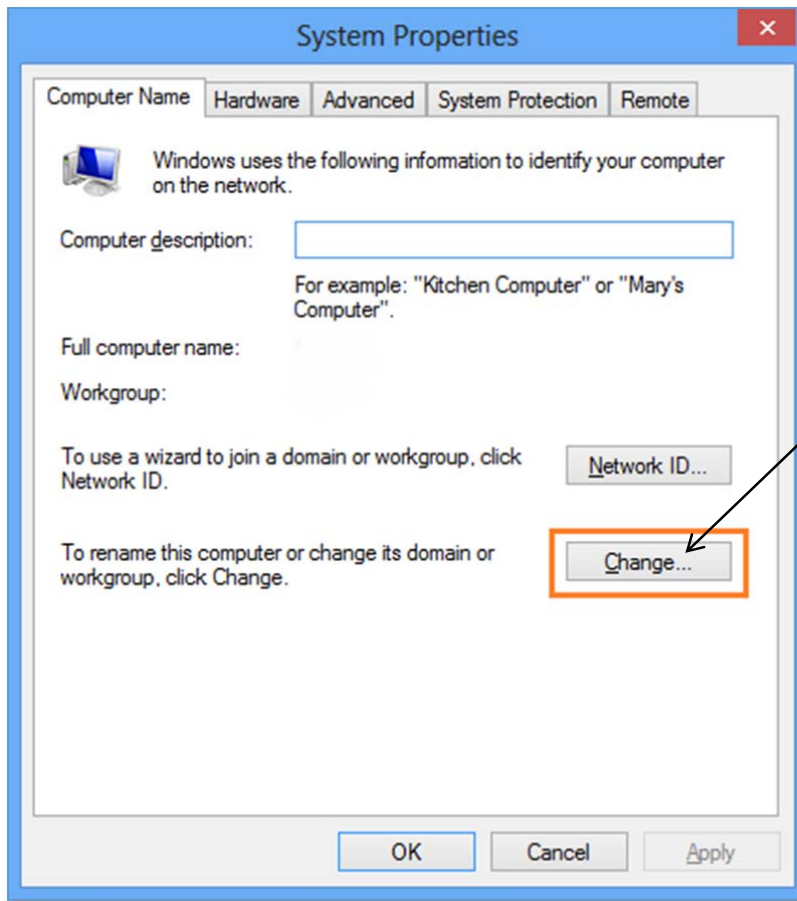
Right-click on **Computer** → click **Properties**.



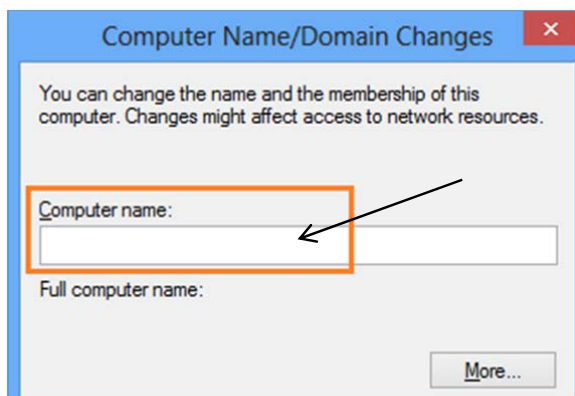
3. Click on **Change Settings** on the left side of the window.



4. Click **Change...**

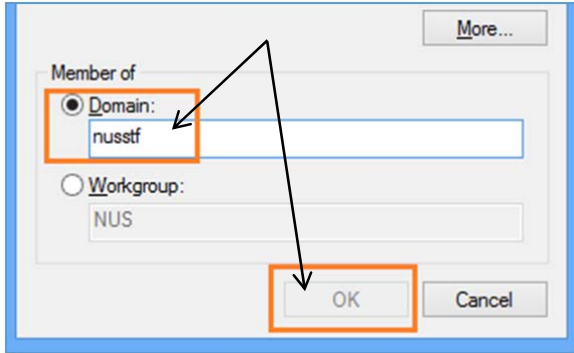


5. Specify a unique computer name for your machine and click **OK**. Restart the computer as prompted.

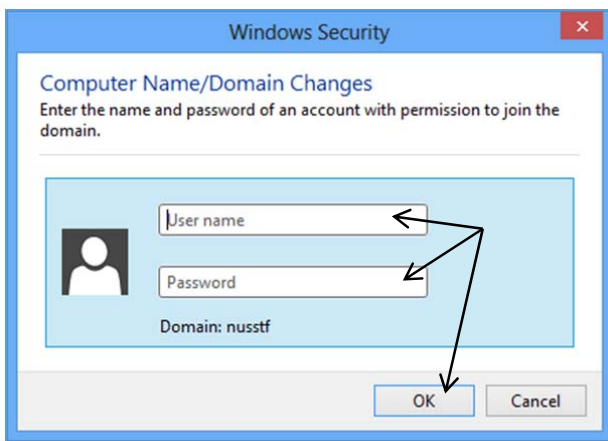


C. Joining to NUS Domain

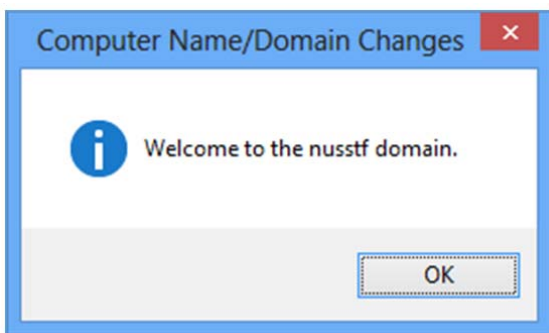
- Repeat steps 1 to 4.
- Select **Domain** → enter **nusstf** for staff or **nusstu** for student → click **OK**.



- Next, enter your **NUSNET User ID** and **password** → click **OK**.



- Once successful, you will be prompted the following. Click **OK** to continue.

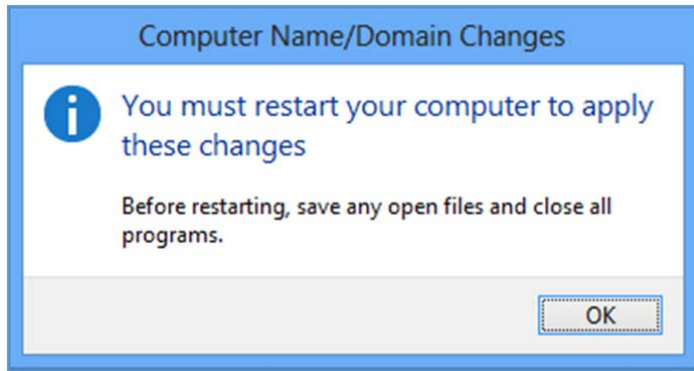


Note:

If you encounter an error that your access is denied, change your computer name again (refer to steps 1 – 5) as it is not unique and has conflicted with an existing computer name.

If you encounter the error "You have exceeded the maximum number of computer accounts you are allowed to create in this domain...", please contact IT Care at 65162080 or itcare@nus.edu.sg.

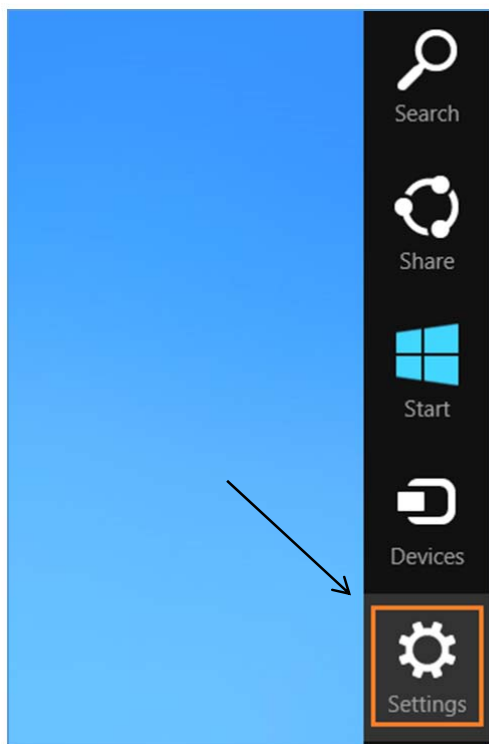
10. Click **OK** again.



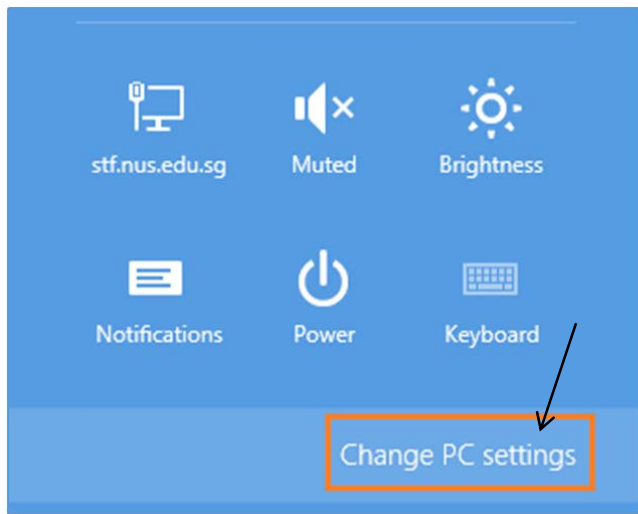
11. Click **OK** again and when prompted to restart your computer, choose **Restart Later**.

D. Adding NUSNET account as Administrator

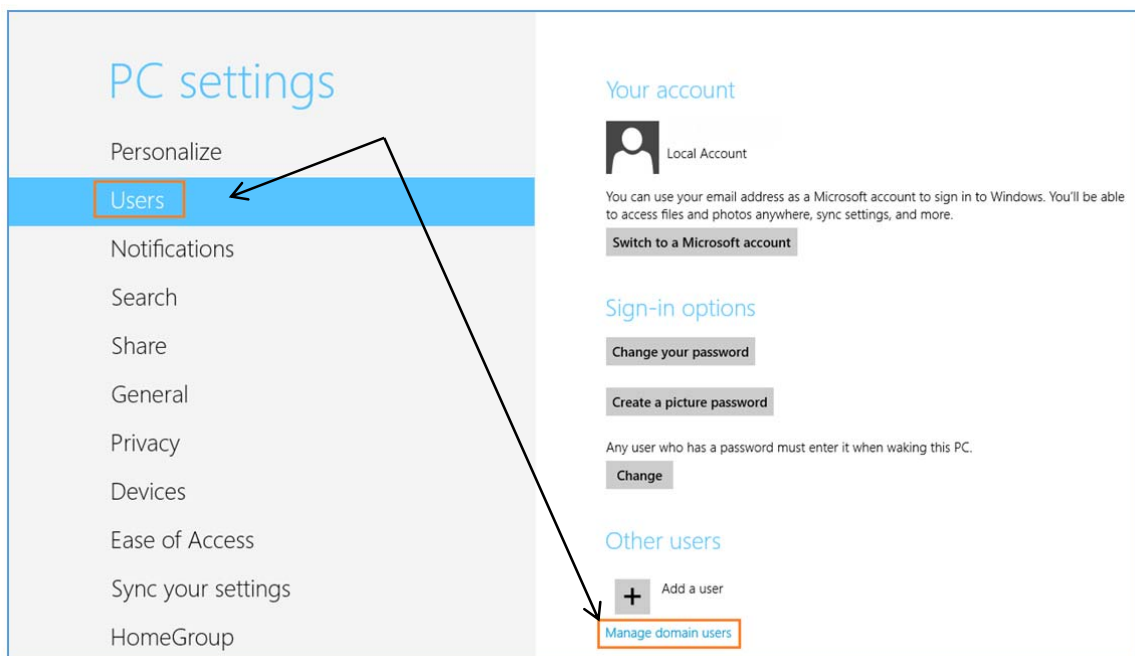
12. Open the Charms bar on the right → click **Settings**.



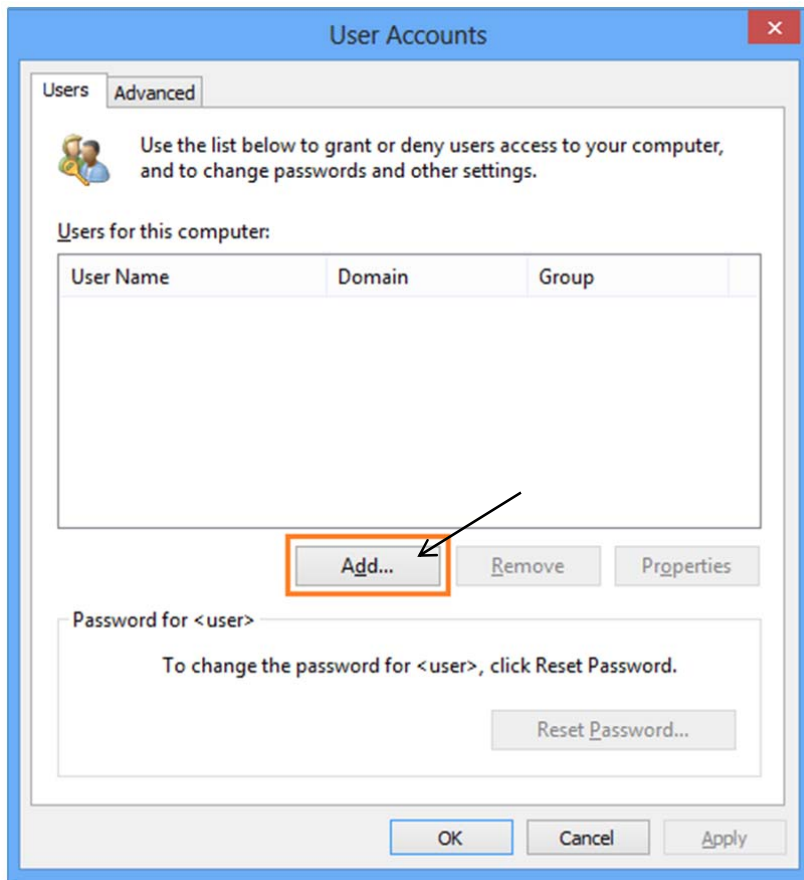
13. Click **Change PC settings**.



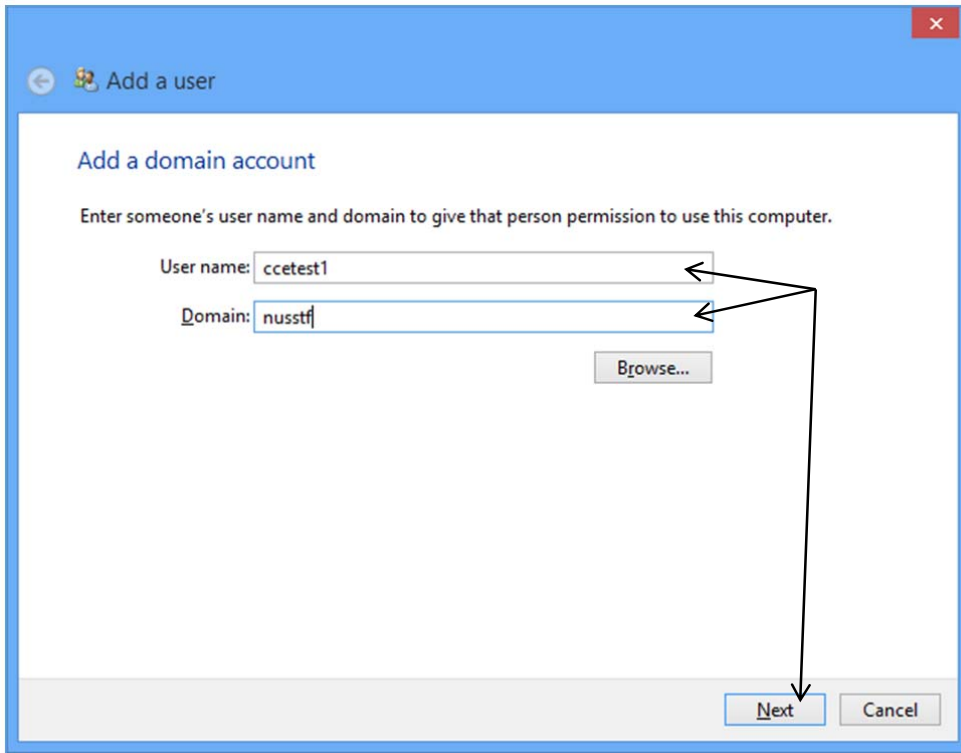
14. Click on **Users** on the left → click on **Manage domain users** on the bottom right.



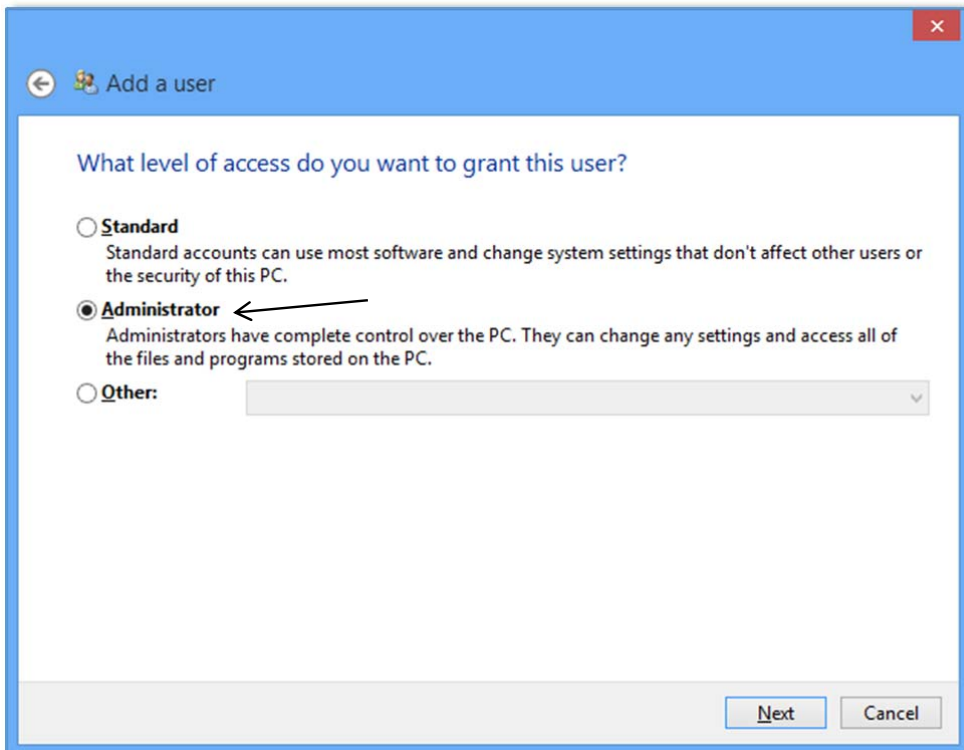
15. Click on **Add...**



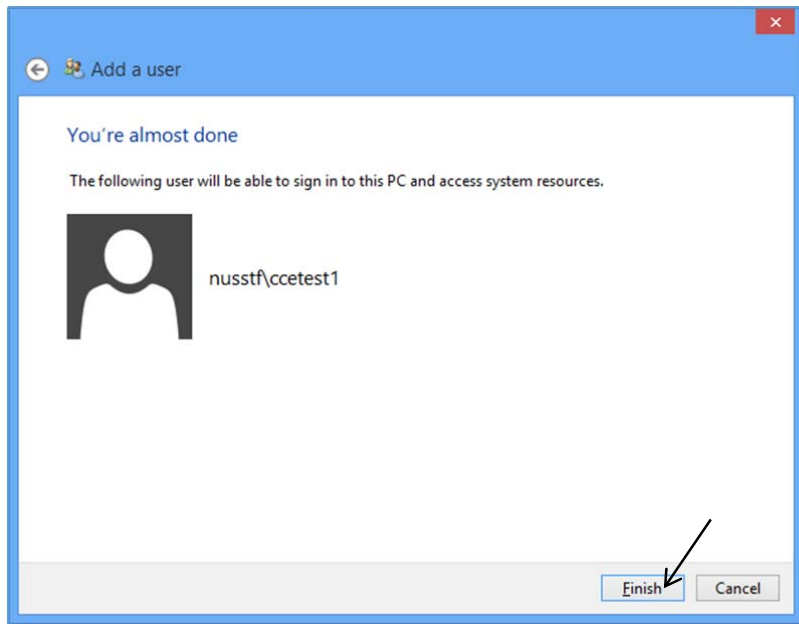
16. Enter your **NUSNET UserID** and **Domain** – **nusstf** for staff, **nusstu** for students and **nusext** for visitor accounts → click **Next**.



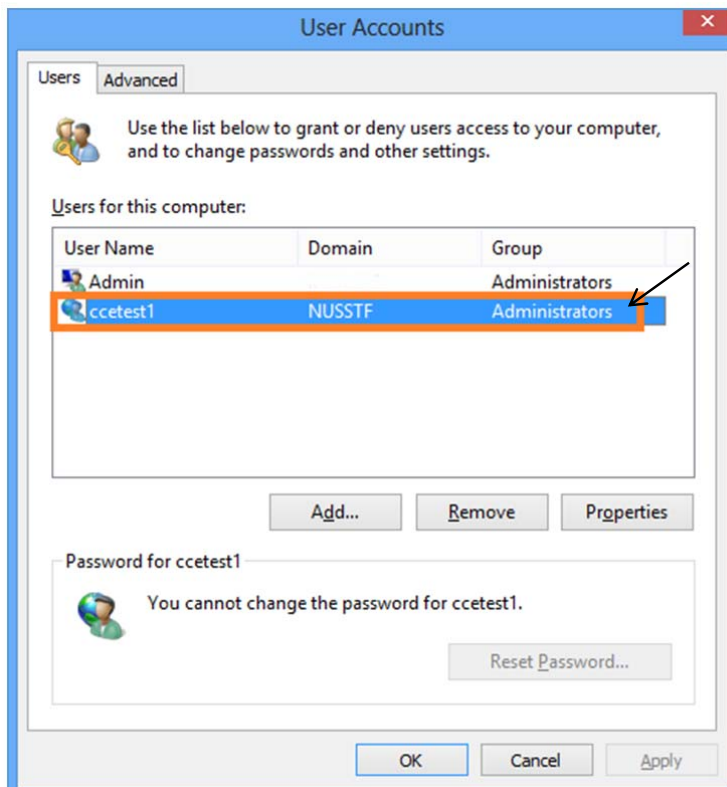
17. Select **Administrator** → click **Next**.



18. Click **Finish**.



19. The NUSNET account is now added as an administrator of the computer. Click **OK** and restart your computer.



20. You are now ready to login to the NUS domain on your computer, with your NUSNET UserID and password.